

your

guide to **superb results**

At Edmonton Public Schools, we believe that every young person is capable of succeeding in school, and we're focused on achieving superb results from all students. Our staff works collaboratively with parents and partners to provide students with the knowledge, skills and self-confidence they need to be successful in school and in life. We also recognize that our students are individuals, with unique needs and interests. To be successful, they need to find their own educational paths. They need opportunities to discover their own potential and to explore what interests them the most.

That's why we offer 30 different alternative programs, many in multiple sites. Whether you are interested in Canadian studies, languages, science and technology, programming with a Christian perspective, sports or fine arts, we can help you find the perfect fit.

Superb Results *from all students*

Welcome to Edmonton Public Schools



welcome to Edmonton Public Schools

Edmonton Public Schools is the second largest school district in Alberta with over 80,000 students enrolled in 203 schools. In addition, Edmonton Public Schools offers lifelong learning opportunities to approximately 40,000 students annually through Metro Continuing Education. At Edmonton Public Schools, we understand the essential role schools play in the lives of children and youth. We believe that all students should have every opportunity to succeed. We also recognize that the world continues to change and that the role of education in equipping students with the high-level skills they need in communication, problem-solving and critical thinking is essential now than ever before. Our staff is dedicated to improving student achievement. We encourage our students to set goals for themselves, and we provide them with the knowledge, skills and confidence they need to achieve these goals.

District Priorities

In our continuing commitment to excellence in public education, our Board of Trustees has adopted the following priorities for 2005–2008:

- to improve achievement of all students in core subjects with an emphasis on literacy and numeracy
- to ensure high-quality teaching and learning
- to achieve high standards of citizenship, conduct, safety and well-being of students and staff

Open Boundaries

Open boundaries support one of our core philosophies — that parents should choose where they send their child for his or her education. Students residing within the district will be accommodated at their designated neighbourhood school, but they can also choose to attend any other in the district provided that:

- the school provides programming to suit the needs of the child
- the school has adequate space

Alternative Programs

At Edmonton Public Schools we know that each student is unique in his or her learning, and we work to adapt our programs to the needs of individual students. That means giving parents and students a choice of the many schools and programs we have to offer.

For this reason we have developed 30 alternative programs, including Aboriginal studies, language programs, sports programs, science and academic programs, Christian-based programs, fine and performing arts programs, Canadian studies, instructional approaches and online learning. Of our 203 schools, more than 80 have one or more of these program specialties. For further information on alternative programs, contact your school or Curriculum and Programs at 429-8580.

Site-based Decision Making

At Edmonton Public Schools, we understand that the decisions that impact schools are best made at the classroom level. For this reason, we have practised site-based decision-making since 1979. That means staffing and the proportion of money to be spent on items like supplies, textbooks and the acquisition of technology are examples of matters that are decided at the school level. We encourage the involvement of parents and community members in the budgeting process both at the district and neighbourhood levels.

Transportation

Edmonton Transit is our first choice for transporting students. Students can buy transit passes at a reduced rate at the school they are attending. Schedule information is available on their website at www.takeETS.com, or by calling 496-1611. Yellow bus service is available to students attending their designated school but living a considerable distance away, and to students recommended by the principal to attend a special education program at a school other than their designated school. Yellow bus service may be available for those elementary students registered in alternative programs. For further information, contact your school or Student Transportation at 429-8585.

Table of Contents

About EPS	2	Fine and Performing Arts Programming	15
Focus on Achievement	3	Aboriginal Programming	16
Choosing the Best School	4	Language Programming	17
Pre-enrolment Process	4	Christian Programming	19
Kindergarten and Preschool Information	5	Transition and Outreach Programs	21
Proposed and New Sites for Current Alternative Programs	6	Special Education	22
Proposed New Alternative Programs	7	School by School Listings	24
High School Programs	8	Board of Trustees	32
Academic Programming	9	Map of District Schools	32
Instructional Approaches	10		

remember If students live outside a school's attendance boundary, their applications to attend that school are not accepted until the school is sure it has enough room for them. If there are more applications for registrations than student spaces, there will be a random selection process to determine which out-of-boundary students will be accepted. Be sure to have other options in case you are unable to attend your first choice of school.

Focus on achievement

superb results

Achievement results show the district is making gains towards superb results.

Edmonton Public Schools is committed to achieving superb results from all students by improving our student achievement results and high school completion rates. We believe all students will leave Grade 3 knowing how to read; that all students will complete and pass their Grade 10 courses; and that all students will complete high school.

Achievement results for the 2003–2004 school year show the district is making gains towards these goals.

“From kindergarten to Grade 12, in schools across the district, we are making gains in our achievement results,” Superintendent Angus McBeath announced at the district’s annual achievement results news conference earlier this year.

On the Provincial Achievement Tests, more of our students achieved the acceptable standard in 2004 than in 2003. Over the past five years, we have been making steady increases in the percentage of our students achieving the acceptable standard and the standard of excellence. In addition, for nearly all subjects, a greater percentage of district students met the acceptable standard and the standard of excellence than was true for the province in 2004.

“This is a remarkable achievement by our staff and students in a challenging year,” said McBeath. “We expected our results to go up because we’d asked our teachers and principals to make an extra effort, and they did.”

On the Grade 12 diploma exams, for nearly all subjects, more of our students achieved the standard of excellence than was true for the province in 2004. For every diploma exam course for which comparisons are possible, the district has moved closer to the provincial results for the acceptable standards over the past year. And for five of the eight diploma exam courses for which comparisons are possible, the district has moved even further ahead of the province in terms of the percentage of students achieving the standard of excellence.

“We are building a foundation of knowledge and skills in the early grades so that our students can be successful in higher grades,” said McBeath.

The district also made gains in the area of high school course completion. Last year, more of our high school students successfully completed their courses. High school course completion is an important indicator of success, according to Anne Mulgrew, supervisor of Student Assessment.

“We believe the more successful students are at completing their courses, the better their chances at staying in school and completing high school,” says Mulgrew.

Improving the high school completion rate remains one of the district’s highest priorities. The district is committed to helping all students complete high school so that they can make a smooth transition to post-secondary education and the world of work.

Over the past four years, the district has seen a steady increase in the percentage of students who are completing high school, from 63 per cent to 69 per cent, with a slight dip this past year to 68 per cent. The district has set a target of 75 per cent high school completion for the 2004–05 school year.

“If we’re going to close the gap on our high school completion rate, we have to get deeper into the work we are doing in the classroom, to ensure each student is reading and writing at grade level,” said McBeath.

Last year, the district undertook some rigorous intervention strategies aimed at boosting the reading and writing level of at-risk students.

The district identified as many as 2,400 students who were reading below grade level. Of the 1925 students the district was able to track, 57 per cent grew by two grade levels in one year.

“This represents remarkable work by teachers and principals,” says McBeath.

McBeath is optimistic about the impact the new government funding to reduce class size will have on the district’s efforts to improve student achievement this year.

“Our commitment to achieve superb results from all students, work more closely together to address individual student needs and provide ongoing training to staff is having a positive impact on student achievement,” says McBeath.

“We intend to work even harder this year to ensure every single student succeeds.”



Choosing the best school

Our goal is to meet the educational needs of every student in our district. With the variety of programming choices, students have a wide range of educational possibilities available to them. Choices include: neighbourhood schools, schools with alternative programs, schools with special education programs and schools with languages other than English.

How to Register

The best way to register your child in any of our schools is to go to the school of your choice with your child. This will give both you and your child an opportunity to see the school, learn about programs and meet some of the staff.

Children who will be four years of age on or before March 1 may register for kindergarten in the fall. Your child must be at least four years six months old as of September 1. The minimum age for Grade 1 is five years, six months. Your child's fifth birthday must be on or before March 1 of the year the child begins Grade 1.

When You Register, You Must:

- bring your child's birth certificate or acceptable proof of age;
- bring your child's up-to-date immunization record;
- fill out the district's registration form (student_registration.pdf); available on our website at www.epsb.ca, under "Schools" then "How to Register."



Pre-enrolment process

Important information regarding the Pre-enrolment process

Participation in the pre-enrolment process is very important. Edmonton Public Schools' pre-enrolment process helps you plan for the upcoming school year. It also allows schools to collect information regarding student enrolment intentions as they plan as well.

Please consider the following when making choices for the 2005-2006 school year:

- Collect information on schools and programs that interest you.
- If your child is moving to a junior or senior high school, contact the designated school for your area for program information.
- If you need help finding the designated school and programming options, phone Planning at 429-8427.
- Attend the school open house for additional information about the registration process.
- For school open house dates, call the schools or check the district website at www.epsb.ca for a link to all available open house information.

- Senior high Open Houses are held in February and March.
- Kindergarten, elementary and junior high open houses are held March, April or May.

If you want to apply to a school that has an optimal enrolment limit contact the school for specific registration information and application forms.

Look for your child's pre-enrolment passport to be sent home in April 2005.

www.epsb.ca

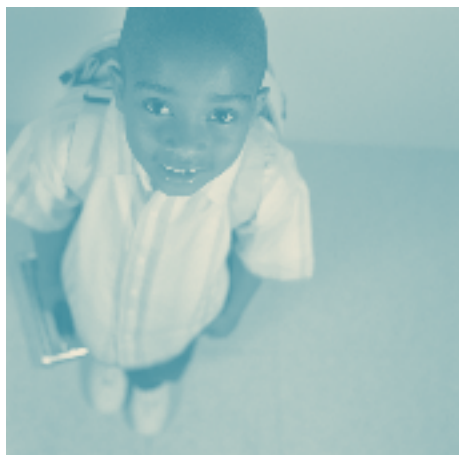
Superb Results *from all students*

 EDMONTON PUBLIC SCHOOLS

Kindergarten and Preschool Information

The First Day of School

The first day of school is an exciting experience for children, parents and teachers. As parents, you want your child's first day to be successful. At school, we look forward to working with you as "partners" in your child's education. Success at school begins at home. You are the first and most important teacher your child will ever have. As a parent, you can help stimulate your child's enthusiasm for learning.



Building a Partnership

- Teachers welcome parents and children to visit the classroom in advance.
- The school will help you learn about the school playground and recess routines.
- The school encourages you and your child to practise the best route to the school or bus stop.

It is helpful for you to know about your child's school.

For example, become familiar with:

- the names of teachers who will be working with your child
- the school procedures regarding care of outer clothing, field trips, fees and supplies
- the school calendar— identifies holidays and special events
- the school timetable — starting and dismissal times
- the school's emergency procedures

Find out how you can become involved in your child's education.

Join the advisory or parent group, become a classroom volunteer or a school council partner... be a part of it!

Your Child's Safety is Important to Us

Schools monitor attendance. They want to ensure your child arrives at school safely. In order to assist the school in this monitoring, we appreciate your assistance.

- Notify the school if your child will be absent or late.
- Be sure the school has an updated emergency number in the event that your child is injured or becomes ill at school.
- Schools plan programs to teach about safety and depend on your help.
- Children learn about safety as they watch others. A parent will be the most important person to model safe behaviour as you walk and drive together.
- As you walk your child to school, talk about crossing the street and being visible to drivers.
- Bicycles used by young children on busy streets can be hazardous. Please supervise your child's riding and help your child develop skills in safe areas.
- Talk with your child about how school safety patrols can help and where Block Parent homes are located in your neighbourhood.

Healthy Connections

Edmonton Public Schools works with many service providers to deliver health services and programs to schools.

Capital Health's Community Health Services provides information and assistance to families and schools on health-related issues for students. For health advice and information 24 hours a day, seven days a week, call Capital Health Link at 408-LINK (5465). For health information online, visit www.capitalhealth.ca.

Immunization

Immunization protects children from vaccine-preventable diseases. These diseases spread more easily when children are together in a group. It is important to have your child's preschool immunization before your child starts kindergarten. Children get the best protection when immunizations are given on time. Immunization records are available at your nearest public health centre. Please contact them in advance to arrange for pick up of records.

Alberta's recommended schedule for your child's immunization

immunizations

Age of Child	Diphtheria Pertussis Tetanus Polio Hib	Menigococcal	Pneumococcal	Measles Mumps Rubella	Varicella (Chickenpox)	Hepatitis B	Diphtheria Tetanus Pertussis
2 months						endemic only*	
4 months						endemic only*	
6 months							
12 months						endemic only*	
18 months							
4–6 years	DPTP only				***		
10–12 years					****	3 doses**	
14–16 years							
Adults: every 10 years							Td only

* Endemic means it is only for children whose parents come from countries where the disease is common.

** Only for children who have not received Hepatitis B Vaccine before.

*** Only for children born after Jan 1, 1997 who have not had varicella disease (chickenpox) or have not received varicella vaccine before.

**** Only for children who have not had varicella disease (chickenpox) or who have not received varicella vaccine before.

Proposed and New Sites for Current Alternative Programs

If any of these proposed sites are of interest to you we would appreciate hearing from you via the form provided on the opposite page. Either clip or copy the form and return by February 28, 2005.

Cogito Alternative Programming

is based primarily on whole-group, teacher-directed instruction, which emphasizes the mastery of basic academic skills, rigorous academic standards and the development of critical and creative thinking skills. Regular homework is an integral part of the program.

NEW • Cogito Alternative Program K-9 At Stratford Campus

Relocation of the kindergarten to Grade 4 Cogito Alternative Program from the Elmwood Campus to the Stratford Campus will establish a Kindergarten to Grade 9 Cogito Alternative Program for the 2005–2006 school year.

PROPOSED • Cogito Alternative Program K-1 in North Edmonton

Planning is underway to establish a kindergarten to Grade 6 Cogito Alternative Program in North Edmonton. This program will open with kindergarten and Grade 1 in September 2005, or in a subsequent year when enrolment is sufficient to offer quality programming.

PROPOSED • Cogito Alternative Program K-2 in Millwoods

Planning is underway to establish a kindergarten to Grade 6 Cogito Alternative Program in Millwoods. This program will open with Kindergarten to Grade 2 in September 2005, or in a subsequent year when enrolment is sufficient to offer quality programming.

French Immersion Alternative Program

provides students with an opportunity to acquire or maintain high levels of proficiency in French. Programming is available from kindergarten to Grade 12. No previous knowledge of French is required to enter the program at kindergarten, Grade 1 or Grade 7. For Grade 7 entry see "French Immersion (Late)." Students graduating from a district French Immersion high school program will be eligible for certification by the Public Service Commission of Canada.

PROPOSED • Additional French Immersion Senior High in North Edmonton

An additional senior high French Immersion Program (district) centre located in north Edmonton will be identified by mid-February, 2005. This program will open in September 2005, or in a subsequent year when enrolment is sufficient to offer quality programming.

Caraway Alternative Program

nurtures creativity and cooperation. It involves mixed-age groupings and integrated, thematically organized instruction. By integrating curriculum across traditional subject-matter divisions, it helps children make meaningful connections and provides opportunities for rich conceptual development.

NEW • Caraway Alternative Program K-6 at Argyll Centre

The Caraway Program will be relocated from Strathearn School to the Argyll Home Education Centre for September 2005.

International Spanish Academy Alternative Program

provides instruction in both English and Spanish. No previous knowledge of Spanish is required. It enables students to become fluent in Spanish and to obtain certification from Alberta and Spain. The program encompasses the cultures of all Spanish-speaking nations. Programming began in September 2001 at the kindergarten level; ultimately, it will be a kindergarten to Grade 12 program.

PROPOSED • International Spanish Academy K-1 in North Edmonton and/or West Edmonton

Planning is underway to establish a kindergarten to Grade 6 International Spanish Academy district centre in North and/or West Edmonton as soon as there is sufficient enrolment to offer quality programming.

Logos Christian Alternative Program

provides programming based on a traditional approach to instruction within a Christian environment. The Alberta Program of Studies is taught within a Christian context grounded in Christian principles. As well, the Christian environment is created through daily prayer, Bible stories, scripture memorization and singing songs of faith.

PROPOSED • Logos Christian Alternative Program K-6 in Millwoods

Planning is underway to establish a kindergarten to Grade 6 Logos Christian Alternative Program in Millwoods. This program will open in September 2005, or in a subsequent year when enrolment is sufficient to offer quality programming.



Proposed New Alternative Programs

Edmonton Public Schools is developing and considering offering, if there is sufficient interest, the alternative programs described below. If any of these programs are of interest to you, we would appreciate hearing from you via the form provided. Before implementation, additional information will be available in print form and meetings will be advertised and held in areas of the city where support has been indicated

Elementary Science Alternative (Kindergarten to Grade 6 with possibility of extension to Grade 9)

In this program, the Alberta Education prescribed curriculum will be enhanced by specific emphases. These include a focus on key ideas in science, the use of inquiry across the subject areas, a concentration on the language of science and the development of environmental and social perspectives of science across the grades. The aim is to encourage students at all grade levels to develop a critical sense of wonder and curiosity about science and technology. Is your child keenly interested in the natural and technological world? Does he or

she ask endless questions related to science? Does he or she stay focused for long periods of time on one topic? If so, this type of alternative (K-6) may be of interest to you.

Elementary Project-Based Alternative (Kindergarten to Grade 6)

This program will involve the Alberta Education curriculum but will organize learning around project work. Projects are complex investigations, based on real-life challenges or problems, and involve children in decision-making, designing learning activities, problem solving and investigating. Children are guided to develop interests in real world topics and investigate these through projects. The children and teachers work collaboratively on exploring topics together as a community of learners, using a wide variety of information sources — library resources, the Internet, fieldwork and interviews with experts. The project approach capitalizes on familiar experiences of the children, providing a learning environment where children learn through investigation, observation and discussion. Project work occurs over an extended period of time and results in realistic representations of what has been learned. This alternative is suited for students who prefer a holistic approach to learning and enjoy learning from first-hand experience.

Junior High Pre-Advanced Placement Alternative (Grades 7-9)

This program will offer a coordinated, rich, rigorous and enhanced Alberta Education curriculum aimed at developing analytical thinking and writing skills. It will include key Advanced Placement program elements such as the use of subject-based vertical teams to ensure continuity from grade to grade and encourage innovation, the use of primary sources and effective questioning, problem-based learning and community service, the use of rubrics to assess and enable student self-evaluation, and the development of a global perspective through resources used and assignments required. The program will be of interest to those who want a more academically rigorous and challenging program, who are interested in broadening their intercultural and international perspectives and who wish to develop skills that enable them to become socially responsible lifelong learners. Criteria for participation in this program will be performance and motivation based.

Response Form

RETURN FORM BY FEBRUARY 28, TO ERIKA ERXLBEN VIA E-MAIL, FAX OR MAIL
 Mail the form to: Centre for Education, One Kingsway, Edmonton, AB T5H 4G9
 E-mail a response to erika.erxleben@epsb.ca Fax the form to (780) 425-6405

I would be interested in the following proposed or new sites.

I would be interested in the following proposed new alternative programs:

My contact information (please indicate the best way to contact you with an asterix*)

Name	Address	
Phone Number	Fax number	E-mail address

School(s) currently attended: (If applicable)

1. _____	2. _____	3. _____
----------	----------	----------

Age and grade of children as of September 2005 who would be attending the program(s):

Child # 1 Age	Grade	Program under consideration
Child # 2 Age	Grade	Program under consideration
Child #3 Age	Grade	Program under consideration

High School Programs

Improving Student Achievement:

To help students improve their achievement at school, Edmonton Public Schools offers diploma and achievement test preparation, tutoring programs and summer school courses. Contact your high school or Metro Continuing Education for more information on these programs.

Work Transition Programs:

Work transition programs include the Registered Apprenticeship Program (RAP) and full-time pipe trades training. Contact your high school for additional information.

Edmonton Public Schools' work experience program allows students to earn high school credit while learning valuable job skills. Contact your high school for additional information.

Transition and Outreach Programs:

Edmonton Public Schools provides a number of transition and outreach programs for students at the junior and senior high level who are not experiencing success in traditional school environments. See page 21 for further details.



summer SCHOOL 05

More Choice for High School Students.

We are working hard to ensure our students have a wide variety of summer learning opportunities available. Students have the option of taking Grade 10, 11 and non-diploma Grade 12 summer school programming either at their own school, or through Metro Continuing Education or Argyll Centre.

Grade 12 Diploma level courses are offered through Metro Continuing Education and Argyll Centre. Students can see their school counsellor for more information or visit the website at: <http://highschools.epsb.ca>

Start planning now for Summer School 2005!

EDMONTON PUBLIC SCHOOLS

Superb Results *from all students*

find out more

Attend school Open Houses for additional information about programming and registration process at Edmonton Public Schools. Call the schools for Open House dates and times or check the district website at www.epsb.ca for a link to all available open house information.

Centre High Campus...

Offering 100% Success One Student at a Time for Fourth and Fifth Year High School Students

Edmonton Public Schools provides a senior high school program designed specifically for students who have attended, or who have been eligible to attend another high school program for three years. Centre High Campus provides:

High school completion • Academic upgrading • Post-secondary studies • Career preparation

Centre High Campus provides a professional, business-style learning environment for students wanting to upgrade or complete high school diploma requirements. Students can also begin post-secondary studies or participate in a career course. A number of courses are only available at Centre High Campus that offer students the opportunity to begin their post-secondary studies while in high school by earning transfer credits towards post-secondary programs, or are recognized by organizations such as the Edmonton Police Service and Edmonton Fire Department.

Partnerships with local post-secondary providers, including MacEwan College, NAIT, NorQuest College and Lakeland College, present CHC students with opportunities not available elsewhere. In addition to these academic partnerships, organizations like Xerox; the Edmonton Motor Dealers' Association; and BioWare Corp are ready to support and recognize student learning at Centre High Campus to ensure our learning experiences are relevant for students. Multiple start dates throughout the year and flexible scheduling also make it easier for students to make learning part of their lives.

Students learn by working collaboratively with teachers, other students and business mentors to realize success. Student success at Centre High Campus is high, but so are expectations. "We provide an atmosphere of support, security, cooperation, maturity, friendliness and renewal," says Ray Cimolini, principal at Centre High Campus. "Students are expected to treat their education like they would a job — and to live by the same standards expected of them at the workplace. We emphasize the importance of attendance, punctuality, cooperation, dress and behaviour."

**Fourth or Fifth Year High School:
Centre High Campus (10-12)**

Braemar School

- Open to any pregnant or parenting teen under the age of 20.
- Offers all the courses needed for a high school diploma. Provides on-site assistance in the areas of accessing financial need, partnering support, medical services, legal information and counselling.
- Partnership with Terra Foundation to provide support including childcare, counselling and baby clothing exchange.

For more information call 468-3000.

Academic Programming

Academic Alternative

readies students for success. Students who have achieved high academic results may be looking for new ways to challenge themselves and explore their own potential. For these students, Edmonton Public Schools' Academic Alternative Program allows them to enrich their learning experience while remaining motivated and excited about learning.

The Academic Alternative Program employs a variety of enrichment activities, including specialized assignments and research requirements to keep students focused and challenged. The program requires students to spend more time on core courses, to spend less time on complementary courses and to take French as a second language. It also provides an unparalleled opportunity for students to push themselves to achieve more, while being supported by teachers and peers who share their goals.

Students who want to be involved in an Academic Alternative Program must write entrance exams. "You know they're committed to their education," explains Pat March, principal of Grandview Heights School. "I find that the students can accomplish a lot of learning in a short period of time because they are highly motivated by nature."

At the high school level, Academic Alternative students focus more stringently on getting ready for post-secondary study. "At Old Scona Academic, the enhanced rigour of our program prepares our students well for university," explains Lou Yaniv, principal of Old Scona Academic. He notes that students in the Academic Alternative Program understand what to expect from university because they're used to the same high expectations and workload. "The transition and adjustment to university study is much easier for students if they have been prepared for it at the high school level. Every year many of our graduates call to thank us for getting them ready for university. They inform us that our instructional program and standards have been of great advantage to them."

Academic Alternative programming is offered at:

Junior High:

Crestwood (7-9), Grandview Heights (7-9), Jasper Place (9)

Senior High:

Jasper Place (10-12), Old Scona Academic (10-12)

Advanced Placement

puts students ahead of the game. Advanced Placement students develop the study and time management skills essential to post-secondary success and, in some instances, even receive credit for entry-level university courses. With Advanced Placement, students are eligible to write internationally recognized exams that can lead to advanced standing at one of 3,000 universities around the world.

The program, which originated in Princeton, New Jersey almost 50 years ago, is often used as a university entrance exam in the United States. It is better recognized at North American colleges and universities than many other enrichment programs.

Jean Stiles, principal of J. Percy Page School, explains that students who have taken the program usually find the transition to college or university studies almost seamless. "Although the first year credits that students can receive with Advanced Placement are valuable, I believe its major value is that it prepares students for post-secondary success."

Stiles says that Advanced Placement students develop the kind of critical thinking and time management skills that post-secondary study demands. "We know from experience that students who have been involved in our Advanced Placement Program have an easier time with post-secondary study and that they're virtually guaranteed to be successful."

Advanced Placement programming is available at:

Eastglen (10-12), Queen Elizabeth (10-12),

Jasper Place (10-12), W.P. Wagner (10-12),

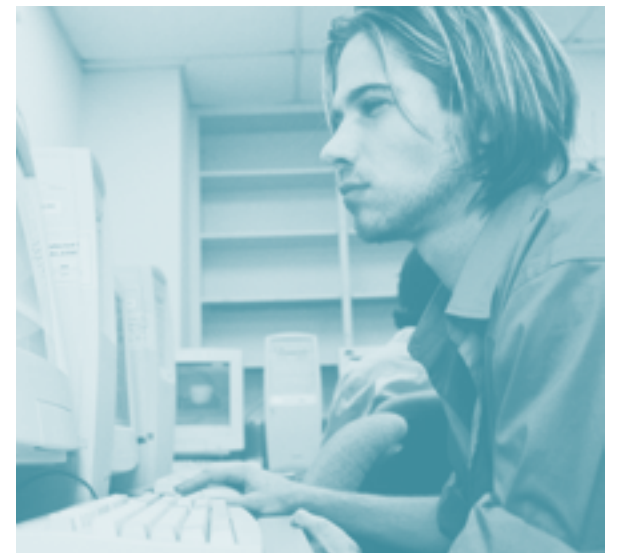
J. Percy Page (10-12), Strathcona (10-12)

Metro Continuing Education's Academic Success Program

As part of Edmonton Public Schools, Metro Continuing Education offers academic and enrichment programming to learners of all ages. Children and youth can access the following choices as part of Metro's Academic Success Program:

- **Metro's High School Credit** has three delivery options available: Traditional instruction, Distance delivery and Fast Track. Fast Track provides an accelerated learning option for students unable to attend regular classes — delivering a high school course in just half a regular semester.
- **Kids' Kollege (K-9)** is designed to enhance student achievement. These programs will also develop lifelong thinking and study skills. Metro's instructors review concepts from curriculum, supervise guided practice and help students with individual questions and concerns.
- **English Language Institute** provides opportunities to increase English Language skills. Programs for youth include reading clubs, classes to introduce the public school system and classes to promote ESL and fun.
- **Summer Computer Camps** ensures students maintain superb results over the summer. Metro offers a number of computer-based classes to enhance personal growth and creativity — Web Design, Photo-editing, Animation and Computer Essentials.

Contact Metro Continuing Education for more information.



International Baccalaureate

At over 1,000 schools in nearly 100 countries, the International Baccalaureate (IB) program is recognized for promoting academic excellence among students. Within Edmonton Public Schools, IB programming is offered at a number of different schools.

At each school, IB focuses on academic excellence, allowing students to pursue advanced study in a variety of subjects. This enables students to take the core curriculum further, delving deeper into specific subjects and pursuing greater understanding in certain areas. It also ensures that academically gifted students remain engaged and challenged by school.

At the middle years level (Grades 6 to 10), International Baccalaureate programming continues to develop the whole person by focusing on citizenship in addition to academics. Students contribute to the community through a variety of volunteer projects and activities, as well as continuing to develop a strong understanding of the relationship between individual aspects of their education.

While the primary and middle years programs are not prerequisites for senior high IB programming, they provide valuable preparation for those interested in pursuing a high school IB program.

At the high school level, the IB program is intended to help prepare students for post-secondary study at the world's leading universities. Students can choose to enrol in a full IB diploma program or can select individual courses for IB certificates. Whatever route they go, International Baccalaureate students graduate from high school with a level of educational excellence that is internationally recognized and valued. More importantly, they graduate with the kind of critical thinking, research methodology and time management skills that set the stage for post-secondary excellence. Rick Pawluk, assistant principal at Ross Sheppard School, says, "The IB program is a powerful catalyst which not only helps students achieve their academic potential, but also addresses the whole student by requiring community service and a vision on a global perspective."

The International Baccalaureate program is offered at:

Primary years:

Victoria (K-5) — Accreditation pending

Middle years:

**Coronation (6), Glenora (6), Lynnwood (6),
Victoria (6-10), Westglen (6), Westminster (7-9)**

High School:

**Harry Ainlay (10-12), Jasper Place (10-12), M.E. LaZerte (10-12),
McNally (10-12), Old Scona Academic (10-12),
Ross Sheppard (10-12), Victoria (11-12)**

Instructional Approaches

Vimy Program (Canadian studies)

Students with a special interest in Canadian studies used to have to wait until college or university to pursue their interest in-depth. Today, they can look to the Vimy Program at L'Académie Vimy Ridge Academy to integrate Canadian studies into their overall curriculum.

The Vimy Program follows the Alberta Program of studies, with a Canadian studies focus incorporated into all core courses, creating a rich uniquely Canadian learning experience. Canadian and world history, Canadian geography and Canadian politics are all integrated into core curriculum. As a result, students receive a well-rounded world view from a uniquely Canadian perspective.

In addition, the Vimy Program offers a variety of unique course options for students interested in cadets and music including: drill, outdoor pursuits, Canadian and military history, pipe and drum and brass and reed bands. Both facets of the music program include instruction in drill and parade, which supplements the regular parade drill curriculum. The program also offers the only parade-style music program at Edmonton Public Schools.

The Vimy Program is dedicated to building and strengthening pride in our nation by focusing on Canadian studies and emphasizing leadership, citizenship and physical fitness. Students in the program participate in a school apparel program and are expected to participate in a variety of community activities.

**The Vimy Program (Canadian studies) is offered at:
L'Académie Vimy Ridge Academy (7-12)**

Child Study Centre

The opportunity to explore research topics in-depth is something the Child Study Centre students at Garneau School are getting long before they are old enough to make the move to higher grades. The Project Approach, pioneered by Dr. Sylvia Chard, is used in all Child Study Centre classrooms.

The Child Study Centre works in partnership with the University of Alberta's Faculty of Education and is an extension of the Faculty's Early Childhood Education Program that has involved young children learning on campus for over 30 years. In recent years the program has moved to include older children, and Garneau School was chosen as the site for grades 1 to 6.

The Child Study Centre operates as a laboratory for U of A students and faculty who work with the children to help them explore and investigate topics through in-depth inquiry. Field visits, work on-campus and interviews with visiting experts provide deep learning experiences. Garneau's proximity to the U of A campus makes the collaboration logistically feasible for all participants, minimizing the time needed by students and faculty to commute back and forth and allowing more time for meaningful study.

"The program gives children memorable learning experiences," explains Crystal Mills, principal of Garneau. "The students who are part of the Child Study Centre are really engaged and experience a very meaningful level of learning." Mills points out that the program takes a very student-centred, project-based approach to learning that helps students develop inquisitive minds and a genuine love of investigation and study. "The skills they develop serve them well throughout the rest of their education and beyond." Mills also notes that the program encourages parents to be involved in their child's learning and welcomes their participation. "The Child Study Centre program values the role that parents play and tries to involve them wherever feasible."

**The Child Study Centre is offered at:
Garneau School (1-6)**

Career Focused Programming

A future without limits — Queen Elizabeth School is offering a new and vibrant high school program that prepares students for the future — today! The career focused programming enables students to explore academic and career options before deciding what interests them most. Our graduates have continued to demonstrate success on provincial diploma exams, and many achieve university entrance requirements.

Students interesting in challenging themselves academically can enroll in the school's Advanced Placement program (AP). This internationally recognized program allows students to take university-level courses while still in high school. They can even receive advanced standing or credit at many Canadian and international universities and colleges.

In Grade 10, all students are introduced to a variety of career options through Student Services by building a career focused portfolio and registering with our "Career Cruising" program. In Grade 11 they explore various career paths and courses needed to reach them. By Grade 12, they are ready to specialize in one of the school's four main departments, which include the following new career-related courses:

- **Arts and Communications** — i.e., Communication Technology (Photography & Graphic Design)
- **Science and Technology** — i.e., Forensic Sciences, Aviation
- **Health and Community Services** — i.e., Medical Services
- **Business and Management** — i.e., Legal Studies, Management & Marketing

The career programming focus provides students with real-life opportunities, including 200 hours of off-campus work experience in their area of interest. It also offers students the chance to receive advanced standing at many post-secondary institutions in Alberta in addition to building a professional resume while in high school.

By combining academic courses with employability skills and off-campus learning opportunities, students will gain the skills they need to be successful in their university, college or world of work pursuits.

**The Career Focused Programming is offered at:
Queen Elizabeth School (10-12)**

The Cogito Alternative Program

The Cogito program — designed for the student who is willing to work to achieve a high level of academic excellence, in a knowledge-based program and in an atmosphere of structured and sequenced learning. Through high standards and high expectations, Cogito prepares students for a wide range of future academic, professional and skilled employment opportunities. The program's focus on the liberal arts produces a balanced approach between the humanities, the sciences, and the fine and practical arts, providing an education of enduring value.

Cogito's unique characteristics include an enriched curriculum, sequenced knowledge content, a focus on attention and increased concentration, early literacy developed through explicit phonics, strong mental and written math skill development, teachers oriented to a classical approach, direct whole group instruction and committed parental support. Students must have a strong work ethic and are required to complete regular homework assignments. Critical thinking and self-discipline are stressed.

Cogito uses a teaching approach that values the acquisition of knowledge. The teaching methods used are proven by research to be effective. The teacher determines activities to ensure that students develop high levels of proficiency with curriculum concepts. Recitation, memorization and practice exercises are included in the students' academic preparation.

Cogito currently provides programming for children in Grades K-9. This program has been in successful operation since 1995.

**Cogito is available at:
Allendale (7-9), Stratford (K-9), Britannia (7-9),
Mount Pleasant (K-6)**

Caraway

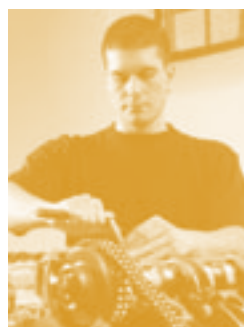
Where learning is memorable — Caraway's child-centred, developmentally appropriate program uses hands-on learning as the basis for inspiring academic achievement. Creativity and cooperation are nurtured in this learning community by using field studies, and student-initiated projects (the "project approach"). The curriculum is frequently integrated across traditional subject-matter divisions to help children make meaningful connections and to provide opportunities for rich conceptual development (National Association for the Education of Young Children, 1996). Children invest their energy in projects of their choice, thereby encouraging a lifelong interest in learning.

Students within the Caraway program are encouraged to develop their decision-making and problem-solving skills, and they are given the support they need to work both independently and as part of a group. Caraway recognizes that our style of delivering the curriculum requires a significant amount of teacher preparation; therefore the program has traditionally provided a teacher's assistant for each classroom.

Caraway takes advantage of the many researched benefits of mixed-age groupings across grade levels. Older students are encouraged to be leaders and help in the learning process for younger students, who in turn thrive in their attention. Students may have the same teacher two or three years in a row.

Caraway classrooms are "open," meaning parents are welcome to enter and join in class activity whenever they are available. Caraway values include diversity, inclusivity and social responsibility, and children are encouraged to develop a sense of community and respect for others. For further information call 429-8398.

The Caraway program will be offered in 2005-06, at the Argyll Home Education Centre, if there is sufficient demand.



find out more

Attend school Open Houses for additional information about programming and registration process at Edmonton Public Schools. Call the schools for Open House dates and times or check the district website at www.epsb.ca for a link to all available open house information.

Home Education and Distance Learning

For many families, the flexibility and autonomy offered through educating at home fit perfectly with their educational and personal priorities. Edmonton Public Schools is committed to working with the home learning community and providing access to resources, support, instruction and staff who respect and support their educational choice.

Home Education

Within Home Education, families can choose from a number of different program options, including Traditional Home Education, where the parent takes on the responsibility for planning, delivering and assessing their child's curriculum. This may be independent of input or assistance from a teacher. The second option is fully provided programming, where district teachers plan, monitor and assess the program, but delivery is provided by the parent at home.

Blended Programming combines the two approaches, offering families assistance with planning and designing the program, as well as with assignment supervision and marking, while still allowing them to develop their own program in other areas. A Christian Home Education Program that revolves around the family's Christian faith, and uses a Christian curriculum and resources, is available through both Millwoods Christian School and the Argyll Centre.

Ron Bradley, principal of the Argyll Centre, notes that schools assist families in any way they can, offering a full range of resources, support and services. He explains that the families themselves determine how much assistance they want as part of their yearly educational plan. "We are a service centre, so we are here to serve parents," explains Bradley. "We don't dictate process. We build what they want and in response to what they want." Staff members work in collaboration with each family to find a program that will meet their unique needs.

Home Education Programs are available at:
Argyll Centre (1-12), Millwoods Christian School (K-12)

Correspondence

Correspondence programs offer learners of all ages the chance to study whenever and wherever they choose. Within Edmonton Public Schools, students in grades 1 to 12 can complete a full range of core and complementary courses using a traditional pen and paper, distance-learning model.

Correspondence students receive their courses in coil-bound modules that include assignment packages. Once complete, packages are sent back or brought in to the schools to be assessed and evaluated by qualified teachers.

At the end of the course, students write exams that meet the testing standards set out by the Alberta Program of Studies. Students can enrol in full correspondence programming or choose specific courses to meet their needs.

Ron Bradley, principal of the Argyll Centre, explains that while correspondence students have the freedom to do the work in their own setting, they can also access academic advice and assistance by phone or e-mail, and they can arrange to meet face-to-face with staff whenever needed.

John Miller, home schooling coordinator at Jasper Place School, encourages face-to-face meetings to discuss assignments and ask questions. He explains that while many of their correspondence students are also enrolled in regular classes and are already on-site, all correspondence students are welcome to access whatever resources and services they need. "It's not about taking the materials away and doing it all by themselves. We're here to help them learn." Jasper Place's program fulfils a specific need for students by allowing them to remain a part of the traditional school environment, even if they're unable to attend regular classes full-time. Frequent and ongoing communication with the home is an integral part of the Jasper Place correspondence program.

Correspondence courses are available through:
Argyll Centre (1-12),
Jasper Place (10-12),
Metro Continuing Education (10-12)

LearnNet

LearnNet is an online delivery option that makes it easy to get a quality education no matter where you live or where you go. LearnNet is part of the Argyll Centre and is currently being delivered to students in grades 1 to 12, locally, nationally and internationally.

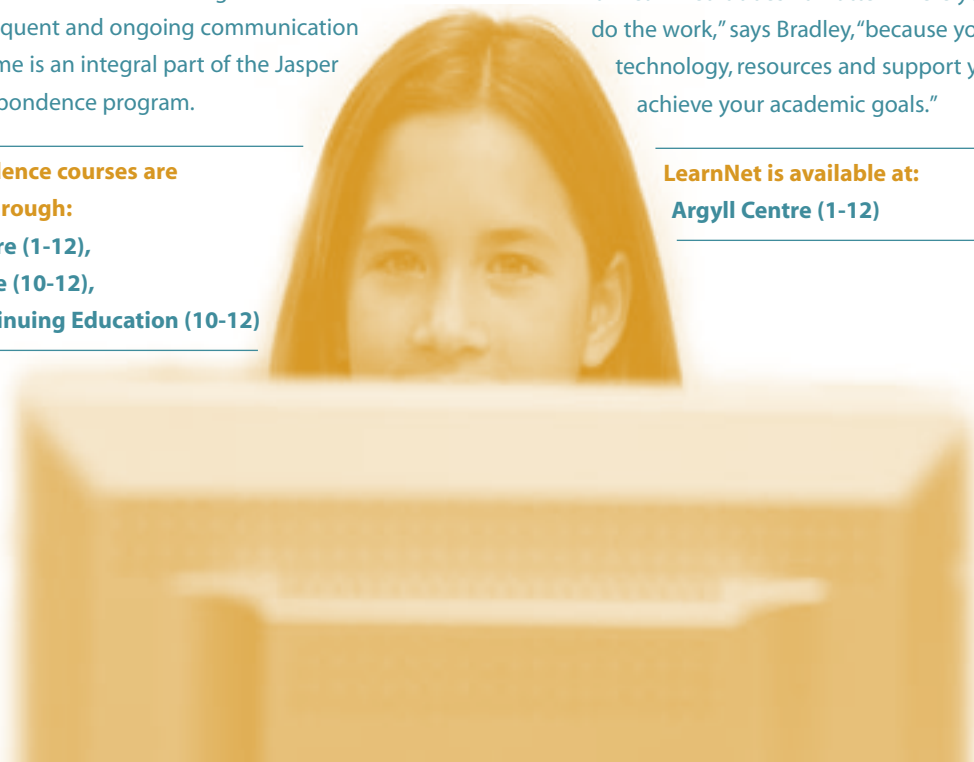
With LearnNet, students are connected to teachers, resources and other students through the Internet. All tests, assignments and projects are submitted online and assessed by Argyll teaching staff. In the online classroom, teachers and students use technology to speak to each other using headsets with microphones and interact using an online whiteboard. In addition, teachers use presentations and video clips to enhance lessons. Even small group work can be supported through the use of "break out rooms."

LearnNet students get advice and feedback by e-mail or phone from their LearnNet teacher and have opportunities to participate in collaborative projects with other students. They also have access to a toll-free help desk that can help them with technology concerns and provide academic advice and assistance. Both students and parents receive regular e-mail updates on academic progress and school news.

Argyll principal Ron Bradley explains that the LearnNet program follows the Alberta Program of Studies and students must meet the same achievement standards as students in traditional classrooms. This means students studying at the high school level can earn an Alberta High School Diploma and qualify for a variety of academic scholarships. Christian LearnNet programming is also available.

"With LearnNet it doesn't matter where you choose to do the work," says Bradley, "because you've got the technology, resources and support you need to achieve your academic goals."

LearnNet is available at:
Argyll Centre (1-12)



Nellie McClung Girls Program

Parents with daughters understand all too well the challenges girls face growing up.

They also understand the value of offering girls the support and guidance they need to find their own strengths and plan for future academic and career success.

In recent years, studies have suggested that some girls do well in a single gender learning environment, especially in adolescence, where they are free to develop the confidence and assurance they need to take them into the future.

The Nellie McClung program was developed to offer girls in junior high the chance to study and explore in a single gender educational setting. In addition to achieving academic excellence, girls in the Nellie McClung program are encouraged to become responsible citizens and to demonstrate their commitment to the community through a variety of leadership and volunteer activities and initiatives.

Students are encouraged to evaluate their own strengths and interests and to decide where they want to go and what they want to achieve. They are also encouraged to explore their own creativity and to adopt healthy, active-living activities that will stay with them throughout their lives. As a community they are taught the value of respect, collaboration and civility and are asked to demonstrate those qualities in the classroom and out. A women's studies component helps students understand the valuable contributions women have made to society and appreciate the worth of their own contributions.

A variety of curriculum extension and enrichment opportunities are offered and a school uniform sets the tone of equality and promotes a sense of community.

**Nellie McClung is offered at:
Avonmore (7-9), Bannerman (7-9), Oliver (7-9)**



Science Programs

Learning comes F.I.R.S.T. at W.P. Wagner

How could students with an interest and aptitude in science and technology ever get the opportunity to conduct ground-breaking biotechnology research using state-of-the-art equipment? Or how does a Grade 10 student get a chance to participate in a forensic fire investigation in her spare time? While most people might think those opportunities are confined to characters on television, students in the F.I.R.S.T. program (Focus in Research, Science and Technology) offered through W.P. Wagner School will tell you they're happening right here in Edmonton.

F.I.R.S.T. is a unique program designed specifically for students with a special interest in science and technology. Students are able to participate in an enriched program that allows for hands-on study and integrated use of technology. They also get the opportunity to go beyond the classroom on outings that take them to post-secondary institutes, research facilities and field experiments.

"F.I.R.S.T. students have opportunities to make connections with real scientists and researchers as well as be involved in enriched activities that just aren't available in regular science programs," explains Jack Geldart, F.I.R.S.T. coordinator at W.P. Wagner.

"W.P. Wagner's F.I.R.S.T. students may choose two careers that interest them and request a mentor. In the last couple of years we have had mentors that include astronomers, psychologists, forensic scientists, a veterinarian, a pilot and a robotics researcher. Mentorship can help a student figure out what they want to do and what they have to do to get there." The program is run in collaboration with Dr. Polziehn, the University of Alberta's Outreach Coordinator. Students must meet certain eligibility requirements to apply to the F.I.R.S.T. program.

**The F.I.R.S.T. Program is offered at:
W.P. Wagner School of Science and Technology (10-12)**

Science Alberta Foundation Alternative Program

This grades 4 to 6 program emphasizes the interrelationship between science, mathematics and technology and the arts and humanities. The program provides an approach to learning that allows students to develop skills, knowledge and concepts through real-life situations.

While the academic curriculum focuses on science and mathematics, students are provided with the time to discover, learn and reflect on the nature of knowledge and the connections between the different disciplines. The program also encourages students to consider ethics as an integral part of daily living rather than an abstract discipline removed from real life.

"The project-based approach provides opportunities for our students to work together and be actively involved in the research — and the learning." Students who value curiosity, discovery, creativity and continuous learning will thrive in this program.

**The Science Alberta Foundation Alternative Program is offered at:
Brookside (4-6), Overlanders (4-6)**

Traditional School Program

Academic achievement and character education are two of the guiding principles behind the Traditional School program. This program focuses on helping students achieve both personal and academic excellence, while guiding them in the development of strong values and beliefs.

Students in the program receive instruction in a highly structured environment that emphasizes high academic achievement. The teacher plans all instruction based on the provincial curricula, and the material is delivered in a systematic and sequential way to a whole group. The routine and sequential planning of the program creates a continuity of instruction throughout the year and from class to class.

The program believes in building a sequential body of knowledge in a child's mind concerning the rules and mechanics that control the correct operation of language. The specific teaching of phonics, spelling, grammar, vocabulary, handwriting and writing are key aspects of the traditional teaching of language arts. In mathematics the mastery of facts, memorization, drill and practice and the development of problem-solving skills are important components of learning and understanding. Technological supports are integrated with curriculum through access to a modern well equipped computer lab. Regular homework allows students to reinforce and practise many of the skills and concepts learned during the school day. This well-balanced program helps children develop intellectually, socially, physically and creatively.

Students also receive guidance on developing belief systems, including setting standards for personal conduct and reinforcing the value of character traits like respect, responsibility, self-control and integrity.

The intent of the Traditional School Program is to provide the best educational foundation possible and to reinforce and support the teachings of the family, stressing the value of good citizenship in the home and at the school.

**The Traditional School Program is offered at:
James Gibbons School (K-6)**

Sports Programs

Sports Alternative Program

The Sports Alternative Program lets athletes achieve success. Watch any of Canada's best athletes in competition, and it's easy to imagine how much training and dedication is required to develop their skills to that level. What most people forget is that these athletes have been honing their skills for years, usually from a very young age, and that they have had to juggle their sport and their schoolwork at the same time. Edmonton Public Schools' Sports Alternative Program was created specifically to meet the needs of student athletes, and to make it easier for them to balance schoolwork and athletics. Students in the program must meet the same academic requirements as other students, but they are given the tools and flexibility to ensure success in both their schoolwork and competitive programs.

The Sports Alternative Program at **Donnan School** (grades 4 to 6) and **L'Académie Vimy Ridge Academy** (grades 7 to 12) provides programming for elite athletes as well as the grassroots development of student athletes. By working in cooperation and partnership with various sport clubs and sport associations, both schools provide flexible scheduling and individualized programming to serve the needs of the student athlete. With the combined school campuses of **Donnan/Vimy**, a seamless transition between elementary and junior/senior high is achieved. "We have developed an exciting program between these two schools," explains the co-principal of both schools, Don Blackwell. "Students starting in the program in Grade 4 can continue on to Grade 12 — ensuring program continuity through to graduation. This progressively developmental program provides our students with a distinct competitive advantage, both academically and athletically."

Currently, the **Donnan/Vimy Sports Alternative Program** serves the needs of athletes involved in hockey, soccer, skiing, gymnastics, figure skating, tennis, golf, diving and swimming.

W.P. Wagner School's Sports Alternative Program (grades 10 to 12) is geared for elite athletes who spend an extended time away from school dedicating themselves to their athletic pursuits. Students in the program receive assistance in academic planning, programming and tutoring. Currently, W.P. Wagner serves student athletes in hockey, alpine skiing, tennis, dance, biathlon, baseball, cross-country skiing, gymnastics, track and field, archery and equestrian sports.

"Our teachers understand the dedication that these students bring to their sport and are committed to being as flexible as possible with them," explains Ken Luchkow, assistant principal at W.P. Wagner. "Students don't get any concession on the curriculum, just concession on when they complete it."

The Elite Athlete Program at Ross Sheppard School (grades 10 to 12) is designed to provide flexible scheduling for those athletes who compete at a provincial, national and/or international level. Students registered in the program receive specialized program schedules that are compatible with the extracurricular demands of training and competition schedules. A program coordinator assists each student to plan a program suitable to their needs.

**The Sports Alternative Program is offered at:
Donnan (4-6), L'Académie Vimy Ridge Academy (7-12),
Ross Sheppard (10-12), W.P. Wagner (10-12)**



Fine and Performing Arts Programming

Dance Program Edmonton Public Schools offers dance programming in partnership with the Edmonton School of Ballet Society for students in grades 4 to 12. This program enables students who aspire to high levels of dance to combine their academics with their passion for dance. Students take their academic programming in the morning and work with highly qualified dance instructors on their dance skills in the afternoon.

The Edmonton School of Ballet offers three dance programs:

1. **Professional program** — for aspiring dancers and dance teachers. Students in this program take two or three dance classes a day and are prepared for international dance examinations in the Cecchetti and Royal Academy of Dance syllabi. Graduates from the program have gone on to professional careers in ballet, modern and jazz or musical theatre, or have continued on in the professional teacher training program.
2. **Accelerated Transfer program** — for students with a limited dance background, who show potential for the Professional program. Students in the Accelerated Transfer program have nine classes per week.
3. **Elective program** — this program covers various forms of dance for students with little or no prior dance experience. Students in the Elective program have six classes per week.

Housed within L'Académie Vimy Ridge Academy, students in both programs have access to superb facilities and instruction. The Edmonton School of Ballet has eight studios equipped with mirrors and barres. Each studio has raised, sprung dance floors. All ballet classes are accompanied by a professional pianist.

"There is a placement audition for students entering the professional and accelerated transfer programs to ensure they have the background basics and physical capabilities to take on the challenges of a full dance program," says Margaret Flynn, director of the Edmonton School of Ballet.

Auditions for the professional dance program are held in the spring. For further information about the Dance Program at Edmonton Public Schools, call the Edmonton School of Ballet at 440-2100 or the schools listed below.

The Dance Program is offered through:
Donnan School (4-6), L'Académie Vimy Ridge Academy (7-12)



Arts Core Arts add another element to learning. Edmonton Public Schools believes involvement in the arts is an important part of a well-rounded education. At the elementary level, three district schools — Afton, Victoria and Virginia Park — offer Arts Core programming that enables students to combine academics with a focus on the arts. These schools use art, drama, music and dance to enhance the Alberta curriculum and to help students learn how to express themselves through the arts.

Virginia Park School places music, art, drama, dance and the literary arts at the core of the curriculum, in addition to studying the arts as distinct disciplines. Students have opportunities to work with artists-in-residence and to interact with the arts community. "We believe that the arts are essential to a rich and meaningful education providing a unique contribution to culture, society and the lives of individual students. The arts open avenues for innovation and invention as well as fostering respect for individual, cultural and aesthetic differences. Arts programming helps students improve in all academic areas and strongly supports our instructional focus on higher order thinking skills and problem-solving," says principal David Morris.

Afton School of the Arts finds ways to enrich and enhance learning through productions and performance and by inviting guest artists to share their insight and their talent. "We encourage artistic expression while helping our students master the artistic, academic and life skills that ready them for future success," says principal Tami Dowler-Coltman. Afton School of the Arts is committed to improving student achievement, believing that the arts provide the perfect vehicle to support and encourage learning across all disciplines within a creative learning environment.

Arts programming is offered at: Afton School of the Arts (K-6), Virginia Park (K-6)

Victoria School of Performing and Visual Arts offers a unique combination of intensive academic study and rich, diverse arts programming that readies students for a lifetime of success.

"Our students can begin their enriched arts and academic programming from their first day of kindergarten and continue their educational path through elementary, junior and senior high school," says Principal Ingrid Neitsch.

Victoria School's students become part of an eclectic, dynamic culture that develops discipline, focus, critical thought, and the power of self-expression. In their academic and artistic work, students discover the importance of community, collaboration and commitment. Through national and international video-conferencing, association with expert staff, and interaction with their peers, students realize their potential for post-secondary and career success.

Five distinct schools of the arts — dance, music, theatre, art, and new media — encourage students to think creatively, and to connect and extend ideas learned in the classroom. Victoria School's International Baccalaureate (IB) program fosters the pursuit of academic and artistic excellence, and gives students the opportunity to gain advanced placement in the world's leading universities.

Victoria School is proud of its association with Edmonton's larger artistic and business community, which support its students in their scholarly and artistic endeavours. These partnerships enrich learning opportunities for students, allowing them to realize their full potential.

Arts programming is offered at: Victoria School of Performing and Visual Arts (K-12)

Aboriginal Programming

Edmonton Public Schools' Aboriginal Programming is focused on helping students understand, honour and appreciate the history, traditions and values of Aboriginal cultures. Students who choose Aboriginal programming have the opportunity to pursue academic excellence while exploring the unique customs, traditions, spirituality, languages and traditional teachings inherent to Aboriginal cultures.



Awasis

The Awasis program offers elementary and junior high students the opportunity to integrate elements of Aboriginal traditions and spirituality into the school environment. It encourages students to explore Aboriginal history, culture and customs, while creating a sense of pride and community within the schools.

"Prince Charles School is a place where students can academically succeed and develop cultural pride and strong social skills," explains Russell Hunter, principal of the kindergarten to Grade 6 school. Students have opportunities to explore many aspects of Aboriginal culture through Cree language instruction, integration of Aboriginal studies in all areas of the curriculum, traditional teachings, music drumming and traditional and Metis dancing.

Awasis is also offered for grades 7 to 9 at Lawton Campus. The program is an alternative program within a regular school setting. Principal Noella Steinhauer states that "students from throughout the city participate in the unique cultural programming that includes elders and other community agencies." The school offers a strong sense of community for both parents and students, and teachers are committed to building strong working relationships with parents.

That sense of community is evident at both the elementary and junior high levels of Awasis, and it is one of the main advantages offered by the program. As Russell Hunter explains, "Here our students flourish and develop, well prepared to share their culture and academic and social skills with the larger community."

Awasis is offered at:

Prince Charles (K-6), Lawton Campus (7-9)

Amiskwaciy Academy

Amiskwaciy (pronounced a-misk-wa-chee) Academy is a groundbreaking school that combines a focus on academic excellence with an exploration of Aboriginal history, values and traditions. Open to all students of all backgrounds, the school is unique in its ability to incorporate elements of Aboriginal culture into curriculum subjects such as English, social studies, math, science, art and drama while also offering such complementary courses as Cree and contemporary and traditional Aboriginal dance.

Amiskwaciy bases its school terms around the four seasons of the calendar, an approach in keeping with the Aboriginal tradition that certain things are better learned at certain times of the year. The themes of these seasons are celebrated through activities, events and options, and are also reflected in the content of specific courses.

The school offers a regular academic program while providing students with opportunities to explore a variety of career options through courses in communication technology, construction technology, design studies, information processing, food studies, fashion studies, woodworking, enterprise and innovation. Amiskwaciy also offers the Registered Apprenticeship Program, which allows students to simultaneously learn a recognized trade while earning high school credits.

Amiskwaciy incorporates key elements of Aboriginal beliefs and values into the school's philosophy, stressing the importance of respect, the wisdom of the ancestors, the significance of Aboriginal history and the value of harmony. The school offers more than a place to learn — it offers a place where students, teachers, parents, community leaders and Elders come together to share wisdom, ideas and opinions.

"Our students recognize that we're on the cutting edge, and that this is the first time education has offered this type of cultural perspective," explains Allan Jack, principal of Amiskwaciy.

Amiskwaciy Academy (7-12)

Rites of Passage

This program is for students of Aboriginal ancestry who are between 12 and 15 years, have experienced difficulty in a regular program setting and who may have poor attendance. This program is provided by Amiskwaciy Academy in partnership with the Bent Arrow Traditional Healing Society. It's located at 101 Airport Road.

This program is offered through Amiskwaciy Academy, but it located at the Prince Rupert site.

find out more

Attend school Open Houses for additional information about programming and registration process at Edmonton Public Schools. Call the schools for Open House dates and times or check the district website at www.epsb.ca for a link to all available open house information.

Language Programming

Research has shown that children who study a second language do better in school. For many parents, making the choice to enrol their children in a second language program is also about preparing them to be good global citizens, gaining a broader perspective on the world.

To provide parents with these options for their children, Edmonton Public Schools offers French Immersion programs, along with seven bilingual language programs in American Sign Language, Arabic, Chinese (Mandarin), German, Hebrew, Spanish and Ukrainian and 10 second language course offerings. In today's global society, the barriers of space are disappearing. Learning a second language is another way that children can be introduced to another country's culture, and according to parents enrolling children in a bilingual or immersion program, it just makes good sense. Learning another language also gives students an advantage in both academic and career success.



The Ukrainian International Bilingual Program is one of the oldest language programs offered by Edmonton Public Schools. It originated as a heritage language program to preserve and extend a culture that was important in the development of the province, but the focus has changed to more of an international perspective.

"We look at what we can do with another language in the world and how we can connect with other Ukrainian speakers," says Rod Kostek, principal of Holyrood School, one of four schools in the district where Ukrainian is offered. "Students in the program meet or exceed achievement expectations and have an increased capacity to appreciate and understand other cultures and ways of life."

The positive impact of language education has been well documented. Students learning a second language show gains in both verbal and nonverbal intelligence, improvements in divergent thinking, and enhancement of memory and listening skills. Their achievement results on standardized tests in core subject areas improve, as do their skills in their first language. This supports research that shows learning a second language creates superior English skills, a fact supported by 25 years of district results. Students also exhibit an enhanced ability to learn more languages.

An opportunity to study Spanish was extended to elementary students in 2001 when Escuela Mill Creek became the first International Spanish Academy in Edmonton, one of only two in Canada. Students in the program take language arts, math, art, physical education and health in Spanish. This program will grow until it encompasses kindergarten to Grade 12, allowing the students to obtain educational credentials from both Alberta

and Spain. "The language combined with the culture has enriched this school and made it a more vibrant place," says

Mike Beaudoin, principal. "It's brought new staff, a host of new families interested in their children's education and Spanish cultural events that have energized the whole school."

Beaudoin notes that about half the students at the school study Spanish. Of these, only half come from a Hispanic background. "Learning Spanish provides access to the language and traditions of at least 20 different countries around the world," he adds.

Offering American Sign Language (ASL) as a second language in high schools is making the world a far more deaf-friendly and accessible place for the significant number of people who find it both necessary and preferable to communicate in ASL. Moreover, several career opportunities exist for those students who are fluent in ASL. Students at Queen Elizabeth School are very enthusiastic about learning ASL. "Many got involved because of their future career aspirations, and others felt compelled to learn ASL to increase their ability to communicate with the deaf community," says Kirk Ferguson, ASL teacher at Queen Elizabeth School.

Learning any second language opens a world of opportunities. Students in language programs can also participate in exchanges with students in other countries. They have an increased ability to enjoy travel or the arts.

Grade 8 students studying German at Allendale School can build their German language skills through an opportunity to participate in an exchange trip to Germany. High school students are in a position to write the Sprachdiplom, which is recognized in Germany and allows students to pursue post-secondary educational opportunities there.

"German is one of the world languages," says Brigitte Werner, a member of the International Languages consulting team. "Students who know German have a greater appreciation for music and philosophy and expanded career and travel options."

The district has expanded their second language offering to include Punjabi as of this year. The course is offered at Meyokumin School at kindergarten and Grade 1, with a planned expansion to Grade 3 for this fall.

There is evidence that having a second language contributes significantly to economic and career potential as employers look for people who can live and work in other countries or communicate with an increasingly diverse customer or client base. Students trained in a second language exhibit greater cross-cultural skills and awareness. They adapt to varying cultural contexts and exhibit greater cultural sensitivity.

The growing awareness among parents and students of the value of second language learning is evident in the 36 per cent increase in French Immersion Kindergarten enrolment since 2002.

For all the reasons mentioned above, language learning gets top marks among parents of Edmonton Public Schools' students. Parental involvement and support of language programming is an important reason for their success.

Because of the recognition of the importance of second languages, Alberta Education will require all students registering in Grade 4 to begin six years of second language study in September 2006. Edmonton Public Schools is well placed to accommodate this initiative.

Bilingual Language Programs | In bilingual language programs, up to 50 per cent of the instruction (in language arts and other subject areas) is in that particular language. No previous experience or skills are required for students entering these programs at kindergarten or Grade 1.

Bilingual language programs are offered at:

American Sign Language

Alberta School for the Deaf (K-12)

Arabic

Glengarry (K-6)

Killarney (7-9)

Malmö (1-6)

Chinese (Mandarin)

Caernarvon (K-6)

Dovercourt (K-6)

Kildare (K-6)

Londonderry (7-9)

M.E. LaZerte (10-12)

McNally (10-12)

Meadowlark (K-6)

Meyonohk (K-6)

Ottewell (7-9)

Parkview (7-9)

Rosslyn (7-9)

Ross Sheppard (10-12)

German

Allendale (7-9)

Forest Heights (K-6)

Rideau Park (K-6)

Rio Terrace (K-4)

Strathcona (10-12)

Hebrew

Talmud Torah (K-9)

International Spanish Academy

Escuela Mill Creek (K-4)

Ukrainian International

Balwin (7-9)

Delwood (K-6)

Holyrood (K-6)

M.E. LaZerte (10-12)

French Immersion | Students in kindergarten and Grade 1 are taught in French 100 per cent of the time. As students progress through the grades, the amount of time spent learning in French gradually decreases. No previous experience or skills are required for students entering these programs.

French immersion is offered at:

Avalon (7-9)

Delwood (K-6)

Dickinsfield (7-9)*

Dunluce (K-1)

Greenfield (K-6)

Greenview (K-6)

Harry Ainlay (10-12)

Holyrood (K-6)

Kenilworth (7-9)*

Laurier Heights (K-9)*

McKernan (K-9)*

Richard Secord (K-6)

Rio Terrace (K-6)

Late French immersion at the Grade 7 level is available at a number of schools.*

Second Language Courses | In addition to immersion and bilingual language programs, Edmonton Public Schools also offers a variety of second language courses. These courses are taught as subjects within a regular program and are designed for students who have little or no previous knowledge and skills in the language, but who want to develop a foundation for fluency.

Second language courses include:

American Sign Language

Arabic

Cree

Chinese (Mandarin)

French

German

Hebrew

Japanese

Latin

Punjabi*

Spanish

Ukrainian

*Punjabi is a new offering at Meyokumin, intended to develop into an alternative language and culture program.

English Language Programs

English as a Second Language

Students whose ability with spoken and written English seriously impairs their ability to function in other district programs are provided with English as a Second Language (ESL) programming. Elementary students receive programming in their neighbourhood school while junior and senior high students receive programming through a number of district centres.

The English Language Institute at Metro Continuing Education offers a wide range of full-time and part-time ESL programs, as well as basic upgrading and pre-apprenticeship training for adults. Specialized ESL programs for children and youth are offered throughout the school year and during the summer. Call 917-5080 or visit www.metrocontinuingeducation.ca for more information about Metro's ESL programs.

ESL is offered at the following junior and senior high schools:

Junior High:

D.S. MacKenzie (7-9), Dan Knott (7-9), Parkview (7-9), Rosslyn (7-9), Vernon Barford (7-9)

Senior High:

J. Percy Page (10-12), Jasper Place (10-12), Queen Elizabeth (10-12)

The English Language Institute is offered at:

Metro Continuing Education



Christian Programming

For parents who want a Christian perspective included as part of their child's education, Edmonton Public Schools offers a numbers of programs from which they can choose.

Logos Christian Alternative Program

The Logos program is an academically focused program based on traditional instructional practices within a Christian environment.

In the Logos program the mandated Alberta curriculum is taught within a Christian context. Teachers help students examine and understand a biblical perspective when studying the curriculum. Teachers further create a Christian environment through daily prayer, the reading and memorization of scripture and singing songs of faith. The goal of the Logos program is that students will achieve excellence academically and will learn to demonstrate knowledge, skills and attitudes that reflect Christian teachings and principles.

Rainer Engler, curriculum coordinator, Logos parent and Logos teacher at Winterburn School, says the program helps to create a strong sense of community and purpose for students. "Students take comfort in sharing similar values and spiritual beliefs, and they enjoy the freedom to learn and express their faith together through discussion, prayer and worship."

This sense of community is reinforced by a variety of activities, including chapels, Christian clubs and activities and community service projects. The Logos program is non-denominational and inclusive. There is no requirement for

parents to be religious themselves or subscribe to a particular denomination, however, it is expected that parents are committed to supporting the program's goals. Engler noted, "The vast majority of parents I've spoken to over the years were more than satisfied with the quality of education their children were receiving, and they were delighted to have their children in classrooms that reinforced their families' beliefs and values." Whatever their background, parents are thrilled with what Logos offers, both academically and spiritually.

Logos is available at:

Elementary:

Belmont (K-6), Fulton Place (K-4), Hardisty (5-9), Kensington (K-6), Queen Alexandra (K-6), Winterburn (K-9), Youngstown (K-6)

Junior High:

Hardisty (5-9), Killarney (7-9), Stratford Campus (7-9), Winterburn (K-9)



Millwoods Christian School Embracing an evangelical approach.

Millwoods Christian School (MCS) offers families an opportunity to apply an evangelical Christian philosophy to the entire learning experience for their children from kindergarten to Grade 12. The evangelical approach believes the Bible to be the Word of God and incorporates that belief into all aspects of the school's learning and extracurricular activities.

"Parents choose us because they want a learning experience that echoes the Christian beliefs they adhere to at home," says Frances Kroeker, principal of Millwoods Christian School. "They know that we incorporate a strong spiritual component into everything we do." In addition to offering religious studies and Christian leadership classes, M.C.S. provides opportunities for students to participate in retreats, chapel and daily devotions. Along with a devout evangelical perspective, the school also offers a strong academic focus, seeking to ensure success for every student. A wide range of complementary courses, a performing arts program and a comprehensive athletic program round out the students' educational experience. Again, these activities are guided by a strong Christian perspective with structured Bible study elements.

The school is evangelical but non-denominational, counting students from more than 80 different churches among its student population. The school does ask all high school students to complete an entrance questionnaire that indicates their commitment to being at the school and expects families to support the school's Christian perspective.

Millwoods Christian School (K-12)

Christian-based distance learning and home education

Families who are looking for ways to incorporate a Christian perspective into distance learning and home-based learning options can look to the Argyll Centre and Millwoods Christian School for advice and support.

Both offer a variety of approved Christian resource learning materials from recognized Christian publishers. They also offer the advice and guidance of certified teachers who are cognizant and supportive of the Christian perspective. Parents seeking a flexible Christian-based education can also utilize the Argyll Centre's LearnNet program, which provides online Christian learning options.

Christian Home Education is offered at:

Argyll Centre (1-12), Millwoods Christian School (K-12)

Edmonton Christian School

Serving God's Kingdom

Edmonton Christian School provides a Bible-based Christ-centred program that integrates faith, learning and service from kindergarten to Grade 12. Understanding that each child has been given unique gifts and talents by God, the program and staff focus on valuing each gift and student equally. The school provides a rigorous and diverse program in a safe and loving environment that enables and encourages students to discover and develop their gifts whether they are in academics, technologies, vocational studies, fine arts, music or athletics.

Every subject is taught from an integrated Christian perspective and is reflected in the school's instructional focus: Our students will grow in critical thinking skills using a Biblical framework. "This focus informs all of our learning and teaching and leads us to a deeper understanding of God and our place in his world. Students are challenged to put their learning into practice by serving God at all times and in all places," explains principal Toni Fernhout.

The school shares the responsibility of educating children with parents and values a strong sense of community by encouraging parental involvement in classroom and school activities.

Edmonton Christian School offers programming at multiple sites. The school is non-denominational, representing more than 145 different churches, and welcomes families from all Christian traditions. Edmonton Christian School is an alternative program of Edmonton Public Schools in partnership with The Edmonton Society for Christian Education.

For information please call 408-7945 or visit www.edmchristian.net.

McQueen Campus (K-2), West Campus (3-9), Northeast Campus (K-9), Senior High Campus (10-12)



Meadowlark Christian School

Inspires academic and spiritual success

The 2004–2005 school year was an important one for Meadowlark Christian School, as they became the newest alternative program to join the Edmonton Public School district.

Founded in 1982 as a private Christian school, it began with a small student population that "filled no more than a couple of portable classrooms," said principal Laurie Barnstable. Today, the K-9 school is home to 260 students and offers a full range of core curriculum and complementary programming that includes a strong music program at both the junior and senior high levels. The school also offers a full range of Career and Technology Studies (CTS) programming at the junior high level, including courses in drama, leadership and outdoor pursuits. An instructional focus on writing is integrated throughout all of the school's programming.

The school believes "that Christianity is meant to be lived 24 hours a day, seven days a week," explains Barnstable. That means that Christianity is reflected both in the programming and in how "we relate to each other...we challenge and encourage our students to treat each other with respect and love." Teachers and staff model that behaviour; Christian values

are reflected in the school's approach to discipline, which emphasizes correction rather than punishment. "We take our faith seriously," stresses Barnstable. "It guides everything we do."

As part of Edmonton Public Schools, Meadowlark Christian now has access to the district's full range of curriculum support and technology resources. They also have opportunities to collaborate with district colleagues and explore a variety of best practices for supporting teaching and learning.

For information please call 483-6476 or visit www.k-9christian.com/.

find out more

Attend school Open Houses for additional information about programming and registration process at Edmonton Public Schools. Call the schools for Open House dates and times or check the district website at www.epsb.ca for a link to all available open house information.

Transition and Outreach programs

Edmonton Public Schools provides a number of transition and outreach programs for students at the junior and senior high level who are not experiencing success in traditional school environments. The overall goal of these programs is to assist students in improving their academic and social skills so that they may return to a school setting and be successful.

In general, the students served in these programs exhibit some or all of the following qualities and behaviours:

- lack of academic success, particularly in language arts and mathematics
- chronic lateness or truancy
- at risk of dropping out of school or have already dropped out entirely
- low self-esteem
- difficulty in relating to or interacting with peers and/or adults

Junior High Programs

Chimo

This program serves students who are at risk of dropping out of school, and require a non-traditional setting. Emphasis is on basic academic skills and behavioural change, in a highly structured environment. The program accommodates a maximum of 30 students, and there are entrance criteria.

This program is offered at two sites:

Chimo-South Idylwyld (8610 - 81 Street)

Chimo-Janus (Second floor, 16030 - 104 Avenue)

Bonnie Doon and Park Plaza Transitions

This program is for students between 12 and 15 years who are experiencing academic or personal difficulties and who need non-traditional approach to staying in school. These students are usually two or more grades behind in language arts and mathematics and have inconsistent school attendance, a low self-esteem and some difficulty relating to others.

This program is offered at:

214, Bonnie Doon Shopping Centre, 462-8237 and at Park Plaza, #10, 11832 - 103 Street, 479-7610

Rites of Passage

The Rites of Passage program is designed for Aboriginal students of junior high age, who are at risk of dropping out of school. It stresses basic academic skills, while providing cultural teaching and second language instruction in Cree and Ojibway. Classes are small, and staff is personally committed to the program. Counselling and support services are available. This program is provided by Amiskwaciy Academy in partnership with the Bent Arrow Traditional Healing Society.

This program is offered through Amiskwaciy Academy, but it is located at the Prince Rupert School site.



Senior High Programs

The Learning Store

This program serves students between 16 and 19 years, as well as those 15 year olds who have previously attended a high school program. Students generally have low self-esteem, may be behind in their academics, have inconsistent school attendance and may have some difficulty relating to peers or adults. The program focuses upon having students obtain credits in Academic/Career and Technology courses while they develop skills and knowledge related to the world of work. Staff provides a strong mentorship role to all students to assist them in setting realistic goals and targets for achievement. Staff meets with each student to determine timelines for course completions as well as the attendance expectations to meet those timelines. A Youth Worker is directly associated with the program to assist students with social/emotional issues that often interfere with learning.

Learning Store Blue Quill

784 Saddleback Road
Ph: 413-0263

Learning Store at Londonderry

2nd Level South, Londonderry Mall
(137 Avenue & 66 Street)
Ph: 457-3467

Learning Store at West Edmonton Mall

Store 1043 (West Edmonton Mall)
Ph: 443-8072

Learning Store at Circle Square

#224, 11808 St. Albert Trail
Ph: 482-1407

Learning Store on Whyte

10007 - 82 Avenue
Ph: 437-8119

Tevie Miller Heritage School Program

The Tevie Miller Heritage School Program offers specialized educational programming for students ages 5 to 20 years who require development of language, speech, literacy and motor and learning skills needed to experience success with the curriculum.

Teachers, speech-language pathologists and assistants work collaboratively as a classroom team to provide individualized, diverse programming at appropriate student levels. Self-esteem is nurtured through successful learning in a safe and caring environment. Reintegration into community schools or other programs is facilitated by transition planning.

Tevie Miller Heritage School Program (K-9)



Learning at the YMCA

This program operates out of the YMCA Enterprise Centre in downtown Edmonton. At this location, Edmonton Public Schools in partnership with the YMCA provides an alternative learning environment for youth in grades 7 through 12 who:

- have a preference for a flexible, non-traditional learning environment
- are at risk of leaving school early or have left school and wish to return and graduate
- have experienced gaps in their learning
- have a history of low self-esteem and low achievement in regular school settings

YMCA Program Offers:

- a supportive learning environment
- collaboration with community partners (e.g., YMCA Youth Transitions Program, AADAC)
- small class sizes with teacher assistant support
- individualized and modified programming to address student needs
- flexible scheduling
- incentive programs that promote regular attendance and pro-social behaviour
- referrals to community agencies

For more information contact the YMCA Enterprise Centre at 10211 - 105 Street or by telephone at 429-5737.

Special Education

Through supporting teaching and learning, Edmonton Public Schools is committed to achieving superb results from all students, including students with special needs. “We provide programming and services appropriate to a wide range of student abilities and needs. Each student is unique,” says Barbara Morgan McDermid, with Instructional and Curricular Support Services. “Diverse needs are met through programming developed at community schools and district centres.” For further information, contact 429-8030.



Challenge and Academic Challenge

Elementary Challenge and junior high Academic Challenge programs provide for the learning needs of bright, high achieving students. The programs provide enrichment of the curriculum and challenging, appropriately paced educational programming.

Behaviour and Learning Assistance

This program assists students with chronic, extreme, pervasive anti-social behaviours. Programming is designed to help students make academic gains while demonstrating acceptable behaviour and social skills in the classroom and community.

Community Learning Skills

Community Learning Skills programming assists students who have moderate cognitive disabilities and significant delays in all areas of development. Programming focuses on student growth in basic academic skills, communication and personal development in the classroom and community.

Extensions

Extensions supports elementary and junior high students who have extremely high intellectual ability who demonstrate a primary need for substantially different educational programming and individual accommodations in order to achieve and prosper. In the Extensions Program students achieve academically, extending beyond curriculum in areas of strength, while developing an understanding of their own challenges and the coping strategies necessary to meet their goals in life.

Inclusive Education

The district supports inclusion of students with special needs with age appropriate, non-disabled peers in community schools and offers a variety of supports. Students are assisted with individually designed instruction and support to meet individual needs.

Individual Support

Individual Support programming assists students with severe to profound developmental delays who may also experience physical, sensory or behavioural challenges and medical conditions. Programming emphasizes meaningful life experiences for students.



Across the district a variety of options and opportunities are offered for students with special needs. Programming possibilities include full inclusion in a community school classroom, specialized programs in community schools, or schools designed to meet the special needs of students.

Interactions

This program assists students with Autism Spectrum Disorders who demonstrate difficulties with social relationships, behaviour and communication, as well as a wide range of abilities and skills. The program assists students to gain academic and life skills in keeping with individual needs and abilities and to demonstrate socially appropriate behaviour and communication skills in a variety of situations.

Literacy

Commencing in Grade 4, this program assists students of low average to average cognitive ability who experience significant academic delays. The program focuses on literacy and numeracy development, citizenship and employment skills.

Opportunity

Opportunity programming assists students with mild cognitive disabilities who experience significant delays in academic achievement. The programming promotes interpersonal, work, life and academic skills, with an emphasis on literacy and numeracy development.

Programs for Students who are Deaf and Hard of Hearing

Program options are offered for students who have moderate to profound hearing losses. One features a bilingual/bicultural learning environment using American Sign Language (ASL). A total communication program is also offered for students who benefit from immersion in a community school.

Preschool Programs

Early Education is provided to children aged 2 1/2 to 5 1/2 years who demonstrate severe disabilities. The program focuses on cognitive, self-help and social skills, speech and language, as well as fine and gross motor development. Staff members work with parents to support their children.

Early Intervention serves children from birth to 3 1/2 years of age who demonstrate developmental delays or disabilities. Programming includes parental support through home visits and playgroups.

Early Education Outreach supports children with severe disabilities in their community school kindergarten. Support includes cognitive self-help, social skills, speech, language and fine and gross motor development. Staff works with parents to support their children.

Early Education Intensive Behavioural Intervention (I.B.I.) supports and transitions children diagnosed with Autism through their preschool years and into Grade 1. Instruction takes place in the Early Education program and in the home with parents.

Strategies

This program assists students with average or above average intellectual ability who experience significant difficulties in language arts and other subject areas. Through intensive programming, students acquire strategies and skills necessary to achieve and understand their learning challenges, with the goal of returning to community schools.

Edmonton Public Schools 2005-06

Abbott (K-6)

12045 - 34 Street T5W 1Z5
Ph: 477-7310
Fax: 471-5281
abbott@epsb.ca
· Strategies

Academy at King Edward (K-12)

8525 - 101 Street T6E 3Z4
Ph: 439-1368
Fax: 439-8432
academy@epsb.ca
· No regular programming
(Academy at King Edward's senior high students receive their programming at Victoria School, 10210 - 108 Avenue)
· Strategies

Afton (K-6)

16604 - 91 Avenue T5R 5A4
Ph: 484-3263
Fax: 486-1791
afton@epsb.ca
· Arts Core
· Strategies

Alberta School for the Deaf (1-12)

6240 - 113 Street T6H 3L2
Ph: 439-0385
Fax: 436-5863
abschdeaf@epsb.ca
· Bilingual (English and American Sign Language) environment for deaf and hard of hearing students
· No regular programming

Aldergrove (K-6)

8525 - 182 Street T5T 1X1
Ph: 487-5182
Fax: 481-2166
aldergrove@epsb.ca
· Behaviour and Learning Assistance
· Opportunity

Allendale (K-9)

6415 - 106 Street T6H 2V5
Ph: 434-6756
Fax: 988-8693
allendale@epsb.ca
· Cogito (7-9)
· German Bilingual (7-9)
· Interactions (5-8)
· No regular programming from K-6

Amiskwaciy Academy (7-12)

101 Airport Road T5G 3K2
Ph: 424-1270
Fax: 424-1284
amiskwaciy@epsb.ca
· Aboriginal programming, Cree as a Second Language
· Rites of Passage (located at Prince Rupert, 11515-113 Avenue)

Argyll Home Education Centre (K-12)

8540 - 69 Avenue T6E 0R6
Ph: 465-1299
Fax: 465-1328
argyll@epsb.ca
· Home Education (Traditional Correspondence, Blended, LearnNet, Christian-based Resources)
· Home Instruction
· Reach Out

Athlone (K-6)

12940 - 129 Street T5L 1J3
Ph: 455-5823
Fax: 455-6469
athlone@epsb.ca
· Behaviour and Learning Assistance

Avalon (7-9)

5425 - 114 Street T6H 3M1
Ph: 434-8402
Fax: 435-7623
avalon@epsb.ca
· French Immersion

Avonmore (K-9)

7340 - 78 Street T6C 2N1
Ph: 466-2976
Fax: 465-3614
avonmore@epsb.ca
· Community Learning and Behaviour Skills (1-6)
· Community Learning Skills
· Nellie McClung (7-9)

Balwin (7-9)

7055 - 132 Avenue T5C 2A7
Ph: 475-3646
Fax: 478-9889
balwin@epsb.ca
· Interactions
· Literacy
· Opportunity
· Ukrainian International Bilingual

Bannerman (K-9)

14112 - 23 Street T5Y 2B9
Ph: 478-7706
Fax: 457-8090
bannerman@epsb.ca
· Literacy (K-6)
· Nellie McClung (7-9)

Baturyn (K-6)

10603 - 172 Avenue T5X 4X4
Ph: 456-6727
Fax: 457-4337
baturyn@epsb.ca
· Literacy

Beacon Heights (K-6)

4610 - 121 Avenue T5W 1M8
Ph: 479-4038
Fax: 471-0896
beacon@epsb.ca
· Early Education
· Literacy

Belgravia (K-6)

11605 - 74 Avenue T6G 0G1
Ph: 435-5560
Fax: 436-9137
belgravia@epsb.ca

Belmead (K-6)

9011 - 182 Street T5T 2Y9
Ph: 481-3314
Fax: 487-8189
belmead@epsb.ca
· Interactions

Belmont (K-6)

3310 - 132 A Avenue T5A 3T1
Ph: 476-9590
Fax: 448-0371
belmont@epsb.ca
· Logos

Belvedere (K-6)

13359 - 62 Street T5A 0V5
Ph: 476-2022
Fax: 478-4088
belvedere@epsb.ca
· Literacy

Bisset (K-6)

3020 - 37 Street T6L 5X1
Ph: 450-6536
Fax: 461-1703
bisset@epsb.ca
· Behaviour and Learning Assistance

Braemar (10-12)

9359 - 67A Street T6B 1R7
Ph: 468-3000
Fax: 468-4949
braemar@epsb.ca
· Pregnant and Parenting Teens

Brander Gardens (K-6)

14865 - 56 Avenue T6H 5G2
Ph: 436-6740
Fax: 448-0359
brander@epsb.ca

Brightview (K-6)

15425 - 106 Avenue T5P 0W3
Ph: 484-6631
Fax: 489-3802
brightview@epsb.ca
· Behaviour and Learning Assistance
· Opportunity

Britannia (7-9)

16018 - 104 Avenue T5P 0S3
Ph: 489-5300
Fax: 484-6101
britannia@epsb.ca

- Behaviour and Learning Assistance
- Cogito
- Community Learning Skills
- Literacy

Brookside (K-6)

5504 - 143 Street T6H 4E5
Ph: 434-0464
Fax: 439-6731
brookside@epsb.ca

- Science Alberta Foundation (4-6)

Caernarvon (K-6)

14820 - 118 Street T5X 1T4
Ph: 456-7020
Fax: 478-3443
caernarvon@epsb.ca

- Chinese (Mandarin) Bilingual (K-6)

Calder (K-6)

12950 - 118 Street T5E 5L2
Ph: 454-4313
Fax: 451-4272
calder@epsb.ca

- Behaviour and Learning Assistance

Callingwood (K-6)

17335 - 76 Avenue T5T 2B1
Ph: 487-0727
Fax: 481-4917
callingwood@epsb.ca

- Behaviour and Learning Assistance

Capilano (K-6)

10720 - 54 Street T6A 2H9
Ph: 466-5117
Fax: 466-2829
capilano@epsb.ca

- Individual Support

Centennial (K-6)

17420 - 57 Avenue T6M 1K4
Ph: 481-5590
Fax: 487-9934
centennial@epsb.ca

Centre High (10-12)

Suite 200, 10310 - 102 Ave T5J 5A2
Ph: 425-6753
Fax: 917-8814
centrehigh@epsb.ca

- Programming for fourth and fifth year high school students only

Chimo

See Instructional Services

Clara Tyner (K-6)

9420 Ottewell Road T6B 2E2
Ph: 469-5339
Fax: 468-5110
claratyner@epsb.ca

Coronation (K-6)

10925 - 139 Street T5M 1P8
Ph: 455-2008
Fax: 455-8717
coronation@epsb.ca

- Behaviour and Learning Assistance (4-6)
- Behaviour and Learning Assistance/Opportunity (4-6)
- International Baccalaureate Middle Years (6)

Crawford Plains (K-6)

4210 - 12 Avenue T6L 5V6
Ph: 463-7211
Fax: 463-5844
crawford@epsb.ca

Crestwood (K-9)

9735 - 144 Street T5N 2T3
Ph: 452-4525
Fax: 451-0294
crestwood@epsb.ca

- Academic Alternative (7-9)
- Academic Challenge (7-9)

D.S. MacKenzie (7-9)

4020 - 106 Street T6J 1A6
Ph: 438-9103
Fax: 438-9146
dsmackenzie@epsb.ca

- Behaviour and Learning Assistance
- English as a Second Language
- Strategies

Daly Grove (K-6)

1888 - 37 Street T6L 2R2
Ph: 450-1532
Fax: 461-4719
dalygrove@epsb.ca

- Literacy

Dan Knott (7-9)

1434 - 80 Street T6K 2C6
Ph: 462-7954
Fax: 461-1841
danknott@epsb.ca

- Behaviour and Learning Assistance
- English as a Second Language
- Literacy
- Strategies

Delton (K-6)

12126 - 89 Street T5B 3W4
Ph: 477-8742
Fax: 479-7553
delton@epsb.ca

- Behaviour and Learning Assistance
- Opportunity

Delwood (K-6)

7315 Delwood Road T5C 3A9
Ph: 476-3969
Fax: 478-1586
delwood@epsb.ca

- French Immersion
- Opportunity
- Ukrainian International Bilingual

Dickinsfield (7-9)

14320 - 88A Street T5E 6B6
Ph: 476-4646
Fax: 473-4295
dickinsfield@epsb.ca

- French Immersion (7-8)
- Late French Immersion
- Strategies

Donnan (K-9)

7803 - 87 Street T6C 3G6
Ph: 466-8573
Fax: 462-4932
donnan@epsb.ca

- Behaviour and Learning Assistance (4-6)
- Dance (4-6)
- Hockey (4-6)
- Sports Alternative (4-6)
- Modified School Calendar

Dovercourt (K-6)

13910 - 122 Avenue T5L 2W3
Ph: 455-6171
Fax: 455-8203
dovercourt@epsb.ca

- Chinese (Mandarin) Bilingual
- Literacy (4-6)

Duggan (K-6)

10616 - 36 A Avenue T6J 0C9
Ph: 434-0319
Fax: 434-3731
duggan@epsb.ca

- Strategies

Dunluce (K-6)

11735 - 162 Avenue T5X 4M6
Ph: 456-9080
Fax: 456-6667
dunluce@epsb.ca

- French Immersion (K-1)
- Strategies

Earl Buxton (K-6)

250 Rhatigan Road East T6R 2H7
Ph: 435-1577
Fax: 435-0178
earlbuxton@epsb.ca

Eastglen (10-12)

11430 - 68 Street T5B 1P1
Ph: 479-1991
Fax: 474-3154
eastglen@epsb.ca

- Advanced Placement
- Strategies

Eastwood (K-6)

12023 - 81 Street T5B 2S9
Ph: 477-2352
Fax: 474-7693
eastwood@epsb.ca

- Behaviour and Learning Assistance
- Modified School Calendar
- Opportunity

Edith Rogers (7-9)

8308 Millwoods Road
(39 Ave. & 83 St.) T6K 1Y7
Ph: 462-3310
Fax: 462-3298
edithrogers@epsb.ca

- Behaviour and Learning Assistance
- Opportunity

Edmonton Christian School

- Christian programming

McQueen Campus (K-2)
14425 McQueen Road T5N 3L3
Ph: 408-8195
Fax: 452-5669
anna.feddes@epsb.ca

West Campus (3-9)

14345 McQueen Road T5N 3L5
Ph: 408-7948
Fax: 452-5669
ecswest@epsb.ca

Northeast Campus (K-9)

13470 Fort Road T5A 1C5
Ph: 408-7942
Fax: 478-1728
ecsne@epsb.ca

Senior High Campus (10-12)

14304 - 109 Avenue T5N 1H6
Ph: 408-7945
Fax: 454-0793
ecssh@epsb.ca

Ekota (K-6)

1395 Knottwood Road East T6K 2P5
Ph: 462-5112
Fax: 462-5016
ekota@epsb.ca
· Strategies

Ellerslie Campus

Ellerslie Campus South (K-4)
6550 Ellerslie Road S.W. T6X 1A4
Ph: 988-5350
Fax: 988-5370
ellersliesouth@epsb.ca

Ellerslie Campus North (5-9)

521 - 66 Street SW T6X 1A3
Ph: 988-5556
Fax: 988-8073
ellerslienorth@epsb.ca
· Literacy (7-9)

Elmwood/Stratford

Elmwood Campus (K-6)
16325 - 83 Avenue T5R 3V8
Ph: 489-6749
Fax: 444-4125
elmwood@epsb.ca
· Early Education
· Individual Support

Stratford Campus

8715 - 153 Street T5R 1P1
Ph: 484-3381
Fax: 489-2972
stratford@epsb.ca
· Cogito (K-9)
· Logos (7-9)
· No regular junior high program

Evansdale (K-6)

9303 - 150 Avenue T5E 2N7
Ph: 476-3331
Fax: 473-7013
evansdale@epsb.ca
· Behaviour and Learning Assistance
· Early Education

Forest Heights (K-6)

10304 - 81 Street T6A 3X4
Ph: 466-0312
Fax: 469-8243
forest@epsb.ca
· German Bilingual

Fraser (K-6)

14904 - 21 Street T5Y 2L6
Ph: 472-0131
Fax: 478-0781
fraser@epsb.ca
· Behaviour and Learning Assistance (4-6)

Fulton Place (K-6)

10310 - 56 Street T6A 2J2
Ph: 466-3871
Fax: 465-5581
fulton@epsb.ca
· Behaviour and Learning Assistance (1-3)
· Logos (K-4)

Garneau (K-6)

10925 - 87 Avenue T6G 0X4
Ph: 433-1390
Fax: 439-5184
garneau@epsb.ca
· Child Study Centre

George H. Luck (K-6)

300 Bulyea Road T6R 2L4
Ph: 438-5011
Fax: 430-6047
ghluck@epsb.ca

George P. Nicholson (K-6)

1120 - 113 Street T6J 7J4
Ph: 439-9314
Fax: 439-9356
georgepnicholson@epsb.ca

Glendale (K-6)

9812 - 161 Street T5P 3H4
Ph: 489-4300
Fax: 489-4630
glendale@epsb.ca
· Behaviour and Learning Assistance (4-6)
· Opportunity

Glengarry (K-6)

9211 - 135 Avenue T5E 1N7
Ph: 476-5373
Fax: 473-3824
glengarry@epsb.ca
· Arabic Bilingual

Glenora (K-6)

13520 - 102 Avenue T5N 0N7
Ph: 452-4740
Fax: 452-3151
glenora@epsb.ca
· International Baccalaureate
Middle Years (6)

Glenrose

See Institutional Services

Gold Bar (K-6)

10524 - 46 Street T6A 1Y3
Ph: 466-4116
Fax: 448-0429
goldbar@epsb.ca
· Behaviour and Learning Assistance (4-6)

Grace Martin (K-6)

8210 - 36 Avenue T6K 0C7
Ph: 462-7121
Fax: 462-7131
gmartin@epsb.ca
· Literacy
· Opportunity

Grandview Heights (1-9)

6225 - 127 Street T6H 3W8
Ph: 434-1502
Fax: 436-7822
grandview@epsb.ca
· Academic Alternative (7-9)

Greenfield (K-6)

3735 - 114 Street T6J 2G6
Ph: 434-8581
Fax: 435-1303
greenfield@epsb.ca
· French Immersion

Greenview (K-6)

5904 - 38 Avenue T6L 3P5
Ph: 462-0660
Fax: 468-5260
greenview@epsb.ca
· French Immersion

Grovenor (K-6)

10345 - 144 Street T5N 2V3
Ph: 455-0832
Fax: 447-1198
grovenor@epsb.ca
· Behaviour and Learning Assistance

Hardisty (K-9)

10534 - 62 Street T6A 2M3
Ph: 469-0426
Fax: 469-2008
hardisty@epsb.ca
· Community Learning Skills (7-9)
· Community Learning and
Behaviour Skills (7-12)
· Logos (5-9)
· Strategies (7-9)

Harry Ainlay (10-12)

4350 - 111 Street T6J 1E8
Ph: 413-2700
Fax: 438-1465
hainlay@epsb.ca
· French Immersion
· International Baccalaureate

Hazeldean (K-6)

6715 - 97 Street T6E 3J9
Ph: 433-7583
Fax: 439-5404
hazeldean@epsb.ca
· Early Education

High Park (K-6)

11031 - 154 Street T5P 2K2
Ph: 489-1145
Fax: 489-7410
highpark@epsb.ca
· Literacy

Highlands (7-9)

11509 - 62 Street T5W 4C2
Ph: 479-4206
Fax: 477-7238
highlands@epsb.ca
· Literacy
· Opportunity
· Behaviour and Learning Assistance

Hillcrest (7-9)

16400 - 80 Avenue T5R 3M6
Ph: 489-2516
Fax: 444-2642
hillcrest@epsb.ca
· Literacy
· Opportunity

Hillview (K-6)

355 Woodvale Road East T6L 5C3
Ph: 463-8108
Fax: 462-5222
hillview@epsb.ca
· Opportunity

Holyrood (K-6)

7920 - 94 Avenue T6C 1W4
Ph: 466-2292
Fax: 468-1044
holyrood@epsb.ca
· French Immersion
· Strategies (for students
in French Immersion)
· Ukrainian International Bilingual

Home Education

See Argyll Centre, Millwoods Christian

Home Instruction Service

See Institutional Services

Homesteader (K-6)

4455 - 128 Avenue T5A 3M9

Ph: 478-1139

Fax: 457-6945

homesteader@epsb.ca

- Early Education
- Opportunity

Horse Hill (K-6)

19355 Meridian Street N.E. T5Y 6E5

Ph: 472-6029

Fax: 472-6254

horsehill@epsb.ca

Inglewood (K-6)

11515 - 127 Street T5M 0V4

Ph: 455-4673

Fax: 453-3384

inglewood@epsb.ca

Institutional Services

10305 Princess Elizabeth Avenue T5G 0Y5

Ph: 457-2485

Fax: 457-2433

instsrvs@epsb.ca

Kennedale

18621 - 127 Street T6V 1B1

Ph: 408-8210

Fax: 427-1513

kennedale@epsb.ca

- Attendance Centre
- Howard House
- Kochee Mena

Yellowhead School

12415 - 125 Street T5L 0T2

Ph: 452-9381

Fax: 427-8248

- CASA House
- Rite Trak

Home Instruction Service

See Argyll

J. Percy Page (10-12)

2707 Mill Woods Road N.W. T6K 4A6

Ph: 462-3322

Fax: 462-7803

jpercypage@epsb.ca

- Advanced Placement
- English as a Second Language

J.A. Fife (K-6)

15004 - 76 Street T5C 1C2

Ph: 476-0775

Fax: 473-8258

jafife@epsb.ca

- Literacy (4-6)

Jackson Heights (K-6)

311 Jackson Road T6L 6S7

Ph: 465-9797

Fax: 465-9796

jacksonheights@epsb.ca

James Gibbons (K-6)

8945 - 153 Street T5R 1P1

Ph: 489-8020

Fax: 489-4224

jjibbons@epsb.ca

- Literacy
- Traditional School

Jasper Place (10-12)

8950 - 163 Street T5R 2P2

Ph: 408-9000

Fax: 486-1984

jasper@epsb.ca

- Academic Alternative (9-12)
- Advanced Placement
- English as a Second Language
- International Baccalaureate
- Strategies
- Traditional Correspondence (1-12)

John A. McDougall (K-6)

10930 - 107 Street T5H 2Z4

Ph: 426-0205

Fax: 425-4088

mcdougall@epsb.ca

- Opportunity

John Barnett (K-6)

14840 - 72 Street T5C 3E5

Ph: 478-1351

Fax: 457-0055

jbarnett@epsb.ca

John D. Bracco (7-9)

3150 - 139 Avenue T5Y 2P7

Ph: 475-1760, ext. 9000

Fax: 476-4427

jdbracco@epsb.ca

- Behaviour and Learning Assistance/ Opportunity
- Opportunity

Julia Kiniski (K-6)

4304 - 41 Avenue T6L 5Y6

Ph: 462-4622

Fax: 440-0925

jkiniski@epsb.ca

- Behaviour and Learning Assistance (4-6)
- Behaviour and Learning Assistance/ Opportunity (4-6)

Kameyosek (K-6)

250 Lakewood Road E. T6K 3L4

Ph: 462-8724

Fax: 462-8755

kameyosek@epsb.ca

Kate Chegwin (7-9)

3119 - 48 Street T6L 6P5

Ph: 469-0470

Fax: 463-7844

kchegwin@epsb.ca

- Behaviour and Learning Assistance

Keheewin (K-6)

1910 - 105 Street T6J 5J8

Ph: 438-3874

Fax: 462-5906

keheewin@epsb.ca

Kenilworth (7-9)

7005 - 89 Avenue T6B 0N3

Ph: 466-2104

Fax: 468-9276

kenilworth@epsb.ca

- French Immersion
- Late French Immersion
- Behaviour and Learning Assistance

Kensington (K-6)

13410 - 119 Street T5E 5N1

Ph: 455-1836

Fax: 452-4249

kensington@epsb.ca

- Literacy
- Logos

Kildare (K-6)

7525 - 144 Avenue T5C 2R8

Ph: 476-5675

Fax: 472-8177

kildare@epsb.ca

- Chinese (Mandarin) Bilingual

Killarney (7-9)

13110 - 91 Street T5E 3P6

Ph: 475-1737

Fax: 475-5311

killarney@epsb.ca

- Arabic Bilingual
- Community Learning Skills
- Logos
- Opportunity

King Edward (K-6)

8530 - 101 Street T6E 3Z5

Ph: 439-2491

Fax: 433-9364

kingedward@epsb.ca

Kirkness (K-6)

610 Kirkness Road T5Y 2K4

Ph: 473-5924

Fax: 457-9798

kirkness@epsb.ca

L'Académie Vimy Ridge Academy (7-12)

8205 - 90 Avenue T6C 1N8

Ph: 465-5461

Fax: 469-1198

vimyridge@epsb.ca

- Dance (in affiliation with Edmonton School of Ballet Society)
- Hockey
- Individual Support
- Sports Alternative
- Vimy Program (Canadian studies)

L.Y. Cairns (7-12)

10510 - 45 Avenue T6H 0A1

Ph: 434-9561

Fax: 438-6133

lycairns@epsb.ca

- L.Y. Cairns is a special needs school
- No regular programming
- Opportunity (7-12)

Lago Lindo (K-6)

17303 - 95 Street T5Z 2Z1

Ph: 456-6980

Fax: 456-2851

lagolindo@epsb.ca

- Behaviour and Learning Assistance/ Opportunity

Lansdowne (K-6)

12323 - 51 Avenue T6H 0M6
Ph: 434-3160
Fax: 438-4566
lansdowne@epsb.ca

LaPerle (K-6)

18715 - 97A Avenue T5T 4C1
Ph: 483-1864
Fax: 444-1871
laperle@epsb.ca

Lauderdale (K-6)

10610 - 129 Avenue T5E 4V6
Ph: 475-8737
Fax: 475-9133
lauderdale@epsb.ca

- Opportunity

Laurier Heights (K-9)

8210 - 142 Street T5R 0L9
Ph: 483-5352
Fax: 444-7432
laurier@epsb.ca

- French Immersion
- Late French Immersion
- Opportunity (7-9)

Lawton Campus (7-9)

See R.J. Scott/Lawton

Lee Ridge (K-6)

440 Millbourne Road E. T6K 1Y8
Ph: 462-3230
Fax: 461-1074
leeridge@epsb.ca

- Behaviour and Learning Assistance

Lendrum (K-6)

11330 - 54 Avenue T6H 0V7
Ph: 434-3588
Fax: 438-0628
lendrum@epsb.ca

- Hearing Impaired (1-6)
- Literacy (4-6)

Londonderry (7-9)

7104 - 144 Avenue T5C 2R4
Ph: 473-4560
Fax: 472-2603
londonderry@epsb.ca

- Academic Challenge
- Chinese (Mandarin) Bilingual
- Opportunity

Lorelei (K-6)

16230 - 103 Street T5X 3A9
Ph: 456-4488
Fax: 456-9594
lorelei@epsb.ca

- Opportunity

Lymburn (K-6)

18710 - 72 Avenue T5T 4E9
Ph: 487-1777
Fax: 487-1800
lymburn@epsb.ca

- Literacy

Lynnwood (K-6)

15451 - 84 Avenue T5R 3Y1
Ph: 489-4500
Fax: 484-0720
lynnwood@epsb.ca

- Academic Challenge
- Community Learning and Behaviour Skills (1-6)
- International Baccalaureate Middle Years (6)

M.E. LaZerte (10-12)

6804 - 144 Avenue T5C 3C7
Ph: 408-9800
Fax: 472-0058
melazerte@epsb.ca

- Chinese (Mandarin) Bilingual
- Community Learning Skills
- International Baccalaureate
- Ukrainian International Bilingual

Major General Griesbach (K-9)

14315 - 102A Street T5E 4L5
Ph: 456-9482
Fax: 456-5201
griesbach@epsb.ca

- Opportunity

Malcolm Tweddle (K-6)

2340 Millbourne Road, W. T6K 1Y9
Ph: 462-3270
Fax: 462-4033
mtweddle@epsb.ca

- Opportunity

Malmo (K-6)

4716 - 115 Street T6H 3N8
Ph: 434-1362
Fax: 438-5711
malmo@epsb.ca

- Arabic Bilingual (1-6)

Mary Butterworth (7-9)

16315 - 109 Street T5X 2R2
Ph: 476-1488
Fax: 478-7511
info@marybutterworth.net

- Literacy
- Opportunity

Mayfield (K-6)

10950 - 159 Street T5P 3C1
Ph: 489-5100
Fax: 448-0492
mayfield@epsb.ca

- Early Education, Early Intervention Program

McArthur (K-6)

13535 - 134 Street T5L 1W3
Ph: 455-2728
Fax: 453-3627
mcarthur@epsb.ca

- Strategies

McCauley (K-9)

9538 - 107 Avenue T5H 0T7
Ph: 424-4121
Fax: 426-0468
mccauley@epsb.ca

- Behaviour and Learning Assistance (7-9)
- Literacy (7-9)
- Opportunity (7-9)

McKee (K-6)

10725 - 51 Avenue T6H 0L3
Ph: 435-7140
Fax: 436-1405
mckee@epsb.ca

- Behaviour and Learning Assistance

McKernan (K-9)

11330 - 76 Avenue T6G 0K1
Ph: 435-4163
Fax: 438-6049
mckernan@epsb.ca

- Extensions
- French Immersion
- Late French Immersion

McLeod (K-6)

14807 - 59 Street T5A 1Y3
Ph: 478-2927
Fax: 476-2077
mcleod@epsb.ca

McNally (10-12)

8440 - 105 Avenue T6A 1B6
Ph: 469-0442
Fax: 465-5958
mcnally@epsb.ca

- Chinese (Mandarin) Bilingual
- Community Learning Skills
- Interactions
- International Baccalaureate

Meadowlark Christian School

9825 - 158 Street T5P 2X4
Ph: 483-6476
Fax: 487-8992
meadowlarkchristian@epsb.ca

- Community Christian Education

Meadowlark (K-6)

9150 - 160 Street T5R 2J2
Ph: 489-5200
Fax: 484-8293
meadowlark@epsb.ca

- Chinese (Mandarin) Bilingual

Mee-Yah-Noh (K-6)

9228 - 128A Avenue T5E 0J8
Ph: 475-1929
Fax: 478-1069
meeyahnoh@epsb.ca

- Community Learning Skills
- Interactions

Menisa (K-6)

933 Knottwood Road South T6K 3Y9
Ph: 463-8474
Fax: 461-5862
menisa@epsb.ca

- Literacy

Metro Continuing Education

10135 - 109 Street T5J 3P1
Ph: 428-1111
Fax: 428-1112
metro@epsb.ca

- Children/youth programs
- Continuing Education programs
- English Language Institute
- Senior high programs

Meyokumin (K-6)

5703 - 19A Avenue T6L 4J8
Ph: 463-8409
Fax: 468-6398
meyokumin@epsb.ca

- Punjabi as a Second Language Culture Course
- Strategies

Meyonohk (K-6)

1850 Lakewood Road South T6K 3Y5
Ph: 463-7627
Fax: 450-3669
meyonohk@epsb.ca
· Chinese (Mandarin) Bilingual

Michael A. Kostek (K-6)

5303 - 190 Street T6M 2L2
Ph: 489-7277
Fax: 481-9304
makostek@epsb.ca

Mill Creek / Ritchie (K-9)

Mill Creek Campus (K-6 for 2005-2006)
9735 - 80 Avenue T6E 1S8
Ph: 433-5746, 439-2666
Fax: 439-7394
millcreek@epsb.ca
· International Spanish Academy (K-5)

Ritchie Campus (7-9)

9750 - 74 Avenue T6E 1E8
Ph: 433-1553
Fax: 433-7769
ritchie@epsb.ca
· Literacy
· Opportunity

Millwoods Christian School (K-12)

8704 Mill Woods Road T6K 3J3
Ph: 462-2627
Fax: 462-9322
millwoodsch@epsb.ca
· Christian Home Education

Minchau (K-6)

3615 Mill Woods Road East T6L 5X2
Ph: 461-0616
Fax: 461-0837
minchau@epsb.ca
· Strategies

Montrose (K-6)

11931 - 62 Street T5W 4C7
Ph: 471-2358
Fax: 477-2881
montrose@epsb.ca
· Behaviour and Learning Assistance (4-6)

Mount Pleasant (K-6)

10541 - 60 A Avenue T6H 1K4
Ph: 434-6766
Fax: 435-8891
mppleasant@epsb.ca
· Behaviour and Learning Assistance
· Cogito

Mount Royal (K-6)

11303 - 55 Street T5W 3P6
Ph: 477-8202
Fax: 471-4621
mountroyal@epsb.ca
· Behaviour and Learning Assistance

Newton (K-6)

5523 - 122 Avenue T5W 1S3
Ph: 474-0751
Fax: 471-1629
newton@epsb.ca
· Opportunity

North Edmonton (K-6)

6920 - 128 Avenue T5C 1S7
Ph: 476-2655
Fax: 476-5082
nedmonton@epsb.ca
· Opportunity

Northmount (K-6)

14020 - 88 A Street T5E 3J4
Ph: 475-5162
Fax: 476-5116
northmount@epsb.ca
· Strategies

Norwood (K-6)

9520 - 111 Avenue T5G 0A6
Ph: 477-1002
Fax: 474-1378
norwood@epsb.ca

Old Scona Academic (10-12)

10523 - 84 Avenue T6E 2H5
Ph: 433-0627
Fax: 433-4994
oldscona@epsb.ca
· Academic Alternative
· International Baccalaureate
· No regular programming

Oliver (K-9)

10227 - 118 Street T5K 2V4
Ph: 488-1221
Fax: 488-1189
oliver@epsb.ca
· Nellie McClung (7-9)

Ormsby (K-6)

6323 - 184 Street T5T 3K1
Ph: 481-4646
Fax: 481-4686
ormsby@epsb.ca
· Strategies

Ottewell (7-9)

9435 - 73 Street T6B 2A9
Ph: 466-7331
Fax: 465-5674
ottewell@epsb.ca
· Chinese (Mandarin) Bilingual

Outreach Programs

Bonnie Doon Transition

214 - Bonnie Doon Shopping Centre T6C 4E3
Ph: 462-8237
Fax: 462-8717
roxanne.eyben@epsb.ca

Chimo Janus

16030 - 104 Avenue T5P 0S3
Ph: 486-2546
Fax: 444-0254
kathlyn.guay@epsb.ca

Chimo South Idylwyld

8610 - 81 Street T6C 2V9
Ph: 466-3617
Fax: 425-0257
steve.rossall@epsb.ca

LEARNING STORE

Learning Store Blue Quill

784 Saddleback Road T6J 4R7
Ph: 413-0263
Fax: 413-0264
lsheritage@epsb.ca

Learning Store at Londonderry

2nd Level South, Londonderry Mall
(137 Avenue & 66 Street) T5C 3R6
Ph: 457-3467
Fax: 473-2533

Learning Store at West Edmonton Mall

Store 1043 (West Edmonton Mall) T5T 3J7
Ph: 443-8072
Fax: 444-2564

Learning Store at Circle Square

#224, 11808 St. Albert Trail T5L 4G4
Ph: 482-1407
Fax: 451-6077
lscircle@epsb.ca

Learning Store on Whyte

10007 - 82 Avenue T6E 1Z2
Ph: 437-8119
Fax: 437-8190

New Directions

Ph: 451-8190
Fax: 451-6077

Park Plaza Transition

#10, 11832 - 103 Street T5G 2J2
Ph: 479-7610
Fax: 479-7611

YMCA Program

YMCA Enterprise Centre
10211-105 Street T5J 1E3
Ph: 429-5737
Fax: 425-9380

Overlanders (K-6)

1150 Hermitage Road T5A 4L4
Ph: 476-3361
Fax: 475-0414
overlanders@epsb.ca
· Behaviour and Learning Assistance
· Science Alberta Foundation (4-6)

Parkallen (K-6)

6703 - 112 Street T6H 3J9
Ph: 434-8503
Fax: 434-8505
parkallen@epsb.ca
· Opportunity

Parkdale (K-9)

11648 - 85 Street T5B 3E5
Ph: 477-7443
Fax: 479-6099
parkdale@epsb.ca
· Cree as a Second Language
· Literacy (4-9)
· Modified School Calendar
· Opportunity (7-9)

Parkview (K-9)

14313 - 92 Avenue T5R 5B3
Ph: 483-3415
Fax: 489-2192
parkview@epsb.ca
· Academic Challenge (7-9)
· Chinese (Mandarin) Bilingual (7-9)
· English as a Second Language (7-9)
· Interactions (7-9)

Patricia Heights (K-6)

16216 - 78 Avenue T5R 3E6
Ph: 487-0550
Fax: 489-5718
patriciah@epsb.ca

Pollard Meadows (K-6)

1715 - 48 Street T6L 3J6
Ph: 463-8680
Fax: 462-7390
pollard@epsb.ca
· Opportunity

Prince Charles (K-6)

12325 - 127 Street T5L 0Z9

Ph: 455-5533

Fax: 453-1525

pcharles@epsb.ca

- Awasis (K-6)
- Cree as a Second Language (K-6)

Princeton (K-6)

7720 - 130 Avenue T5C 1Y2

Ph: 476-2344

Fax: 448-0377

princeton@epsb.ca

- Opportunity

Queen Alexandra

7730 - 106 Street T6E 4W3

Ph: 439-2516

Fax: 433-5510

queenalex@epsb.ca

- Logos

Queen Elizabeth (10-12)

9425 - 132 Avenue T5E 0Y4

Ph: 476-8671

Fax: 478-8638

queene@epsb.ca

- Advanced Placement
- Career Credential Program
- English as a Second Language

R.J. Scott/Lawton (K-9)

R.J. Scott Campus (K-6)

11610 - 38 Street T5W 2H1

Ph: 477-2897

Fax: 479-3008

rjscott@epsb.ca

Lawton Campus (7-9)

11602 - 40 Street T5W 2K6

Ph: 471-1052

Fax: 471-3236

lawton@epsb.ca

- Awasis
- Behaviour and Learning Assistance
- Cree as a Second Language
- Literacy

Richard Secord (K-6)

4025 - 117 Street T6J 1T4

Ph: 436-9839

Fax: 432-1319

rsecord@epsb.ca

- French Immersion

Rideau Park (K-6)

10605 - 42 Avenue T6J 3Z9

Ph: 437-0010

Fax: 430-9898

rideaupark@epsb.ca

- German Bilingual

Rio Terrace (K-6)

7608 - 154 Street T5R 1R7

Ph: 481-6866

Fax: 484-5207

rioterrace@epsb.ca

- French Immersion
- German Bilingual (K-4)

Ritchie Campus

See Mill Creek/Ritchie

Riverbend (7-9)

14820 - 53 Avenue T6H 4C6

Ph: 434-7914

Fax: 438-9406

riverbend@epsb.ca

Riverdale (K-6)

8901 - 101 Avenue T5H 0B1

Ph: 425-7600

Fax: 423-2799

riverdale@epsb.ca

Ross Sheppard (10-12)

13546 - 111 Avenue T5M 2P2

Ph: 448-5000

Fax: 452-7563

rsheppard@epsb.ca

- Chinese (Mandarin) Bilingual
- Community Learning Skills
- Hockey
- International Baccalaureate
- Sports Alternative
- Interactions

Rosslyn (7-9)

13215 - 113A Street T5E 5B9

Ph: 453-1576

Fax: 455-7605

rosslyn@epsb.ca

- Behaviour and Learning Assistance
- Behaviour and Learning Assistance/ Opportunity
- Chinese (Mandarin) Bilingual (7-9)
- English as a Second Language

Rundle (K-6)

11005 - 34 Street T5W 1Y7

Ph: 471-6100

Fax: 474-6825

rundle@epsb.ca

- Behaviour and Learning Assistance

Rutherford (K-6)

8620 - 91 Street T6C 3N2

Ph: 466-2891

Fax: 468-2254

rutherford@epsb.ca

S. Bruce Smith (7-9)

5545 - 184 Street T6M 2L9

Ph: 444-4946

Fax: 444-7776

sbsmith@epsb.ca

- Opportunity
- Strategies

Sakaw (K-6)

5730 - 11 A Avenue T6L 3A9

Ph: 463-1854

Fax: 463-2076

sakaw@epsb.ca

- Opportunity

Satoo (K-6)

8515 - 17 Avenue T6K 2C7

Ph: 462-5125

Fax: 462-2274

satoo@epsb.ca

- Behaviour and Learning Assistance

Scott Robertson (K-6)

13515 - 107 Street T5E 4W3

Ph: 475-3565

Fax: 472-9235

srobertson@epsb.ca

- Early Education
- Individual Support, Individual Support (Rosecrest Centre)

Sherwood (K-6)

9550 - 152 Street T5P 0B9

Ph: 489-2600

Fax: 481-9127

sherwood@epsb.ca

- Opportunity

Sifton (K-6)

4305 - 134 Avenue T5A 3R5

Ph: 476-7953

Fax: 478-4790

sifton@epsb.ca

- Behaviour and Learning Assistance

Spruce Avenue (K-9)

11424 - 102 Street T5G 2E7

Ph: 479-0155

Fax: 479-8523

spruceave@epsb.ca

- Literacy

Steele Heights (7-9)

14607 - 59 Street T5A 1Y3

Ph: 478-5319

Fax: 473-7755

steele@epsb.ca

- Behaviour and Learning Assistance
- Strategies

Steinhauer (K-6)

10717 - 32A Avenue T6J 4A6

Ph: 437-1080

Fax: 438-5413

steinhauer@epsb.ca

- Literacy

Stratford (7-9)

See Elmwood/Stratford

Strathcona (10-12)

10450 - 72 Avenue T6E 0Z6

Ph: 439-3957

Fax: 432-0583

strathcona@epsb.ca

- Advanced Placement
- German Bilingual
- Strategies

Strathearn (K-9)

8728 - 93 Avenue T6C 1T8

Ph: 468-5147

Fax: 448-0495

strathearn@epsb.ca

- Behaviour and Learning Assistance

Sweet Grass (K-6)

11351 - 31 Avenue T6J 4T6

Ph: 437-0367

Fax: 437-7221

sweetgrass@epsb.ca

- Opportunity

T.D. Baker (7-9)

1750 Millwoods Road East T6L 5C5

Ph: 462-5496

Fax: 450-8560

tdbaker@epsb.ca

- Academic Challenge
- Behaviour and Learning Assistance/ Opportunity

Talmud Torah (K-9)

6320 - 172 Street T5T 6H1

Ph: 487-9290

Fax: 481-9790

talmudt@epsb.ca

- Hebrew Bilingual

Terrace Heights (K-6)

6859 - 100 Avenue T6A 0G3
Ph: 469-3852
Fax: 465-4108
terrace@epsb.ca
· Strategies

Tevie Miller Heritage School Program

6240 - 113 Street T6H 3L2
Ph: 436-0465
Fax: 436-0385
heritage@epsb.ca
· Early Education
· Early Education
· No regular programming
· Speech and Language Learning Difficulties (1-9)

Thornccliffe (K-6)

8215 - 175 Street T5T 0G9
Ph: 487-2061
Fax: 444-5150
thornccliffe@epsb.ca
· Behaviour and Learning Assistance

Tipaskan (K-6)

1200 Lakewood Road N. T6K 4A3
Ph: 462-5035
Fax: 463-5649
tipaskan@epsb.ca
· Interactions

Velma E. Baker (K-6)

2845 - 43A Avenue T6T 1J9
Ph: 440-4088
Fax: 465-1275
vebaker@epsb.ca

Vernon Barford (7-9)

32 Fairway Dr. (119 St & 38 Ave.)
T6J 2C1
Ph: 413-2211
Fax: 434-4467
vbarford@epsb.ca
· Academic Challenge
· English as a Second Language
· Literacy

Victoria School of Performing and Visual Arts (K-12)

10210 - 108 Avenue T5H 1A8
Ph: 426-3010
Fax: 498-8727
victoria@epsb.ca
· Arts Program
· International Baccalaureate:
- Primary Years (K-5) Programme
- Middle Years Programme
- Diploma Program

Vimy Ridge

See L'Académie Vimy Ridge Academy

Virginia Park (K-6)

7324 - 109 Avenue T5B 0A1
Ph: 477-8152
Fax: 479-1615
virginia@epsb.ca
· Arts Core

W.P. Wagner (10-12)

6310 Wagner Road T6E 4N5
Ph: 469-1315
Fax: 466-6748
wpwagner@epsb.ca
· Advanced Placement
· F.I.R.S.T. (Focus In Research Science & Technology)
· Hockey
· Interactions
· Sports Alternative

Waverley (K-6)

6825 - 89 Avenue T6B 0N3
Ph: 469-6682
Fax: 465-3219
waverley@epsb.ca
· Early Education

Weinlos (K-6)

2911 - 48 Street T6L 5T7
Ph: 462-5261
Fax: 461-3136
weinlos@epsb.ca
· Behaviour and Learning Assistance
· Opportunity

Wellington (7-9)

13160 - 127 Street T5L 1B2
Ph: 451-5750
Fax: 452-4002
wellington@epsb.ca
· Behaviour and Learning Assistance
· Individual Support (7-12)

Westbrook (K-6)

11915 - 40 Avenue T6J 0S1
Ph: 438-4200
Fax: 437-7110
westbrook@epsb.ca
· Academic Challenge

Westglen (K-6)

10950 - 127 Street T5M 0S7
Ph: 454-3449
Fax: 454-3281
westglen@epsb.ca
· International Baccalaureate Middle Years

Westlawn (7-9)

9520 - 165 Street T5P 3S4
Ph: 484-3456
Fax: 487-6647
westlawn@epsb.ca
· Individual Support
· Literacy

Westminster (7-9)

13712 - 104 Avenue T5N 0W4
Ph: 452-4343, 452-4344
Fax: 451-3866
westminster@epsb.ca
· International Baccalaureate Middle Years Programme
· Strategies
· Behaviour and Learning Assistance

Westmount (7-9)

11125 - 131 Street T5M 1C2
Ph: 452-8350
Fax: 451-5569
westmount@epsb.ca
· Opportunity

Windsor Park (K-6)

8720 - 118 Street T6G 1T5
Ph: 433-3924
Fax: 433-8523
windsor@epsb.ca

Winterburn (K-9)

9527 - Winterburn Road NW T5T 5X9
Ph: 447-3566
Fax: 447-2403
winterburn@epsb.ca
· Logos

Woodcroft (K-6)

13750 Woodcroft Avenue T5M 3M4
Ph: 455-4690
Fax: 452-4996
woodcroft@epsb.ca
· Behaviour and Learning Assistance

Woodside/ Capital Health Schools

10305 Princess Elizabeth Avenue T5G 0Y5
Ph: 457-2485
Fax: 457-2433
· CASA
· Centre Point
· Glenrose
· Highwood
· Royal Alexandra Hospital
· Stollery Children's Centre
· Woodside Behaviour Assistance

Yellowhead

See Institutional Services

YMCA Program

See Outreach

York (K-6)

13915 - 61 Street T5A 1P3
Ph: 476-6336
Fax: 472-3512
york@epsb.ca
· Academic Challenge

Youngstown (K-6)

10330 - 163 Street T5P 3N5
Ph: 489-4600
Fax: 489-1117
youngstown@epsb.ca
· Logos

find out more

Centre for Education

One Kingsway, Edmonton AB T5H 4G9

www.epsb.ca

429-8000

Board of Trustees

Ward A

Bev Esslinger

429-8087

Ward B

Wendy Keiver

429-8085

Ward C

Don Williams

429-8016

Ward D

Dave Colburn

429-8083

Ward E

Ken Gibson

429-8079

Ward F

Don Fleming, *Vice Chair*

429-8086

Ward G

Svend Hansen, *Board Chair*

429-8135

Ward H

George Nicholson

429-8084

Ward I

Gerry Gibeault

429-8082

Superintendent of Schools

Angus McBeath

429-8010

Key Contacts

Alternative Programs

429-8580

429-8007

Special Education Programs

429-8030

School Boundaries

429-8427

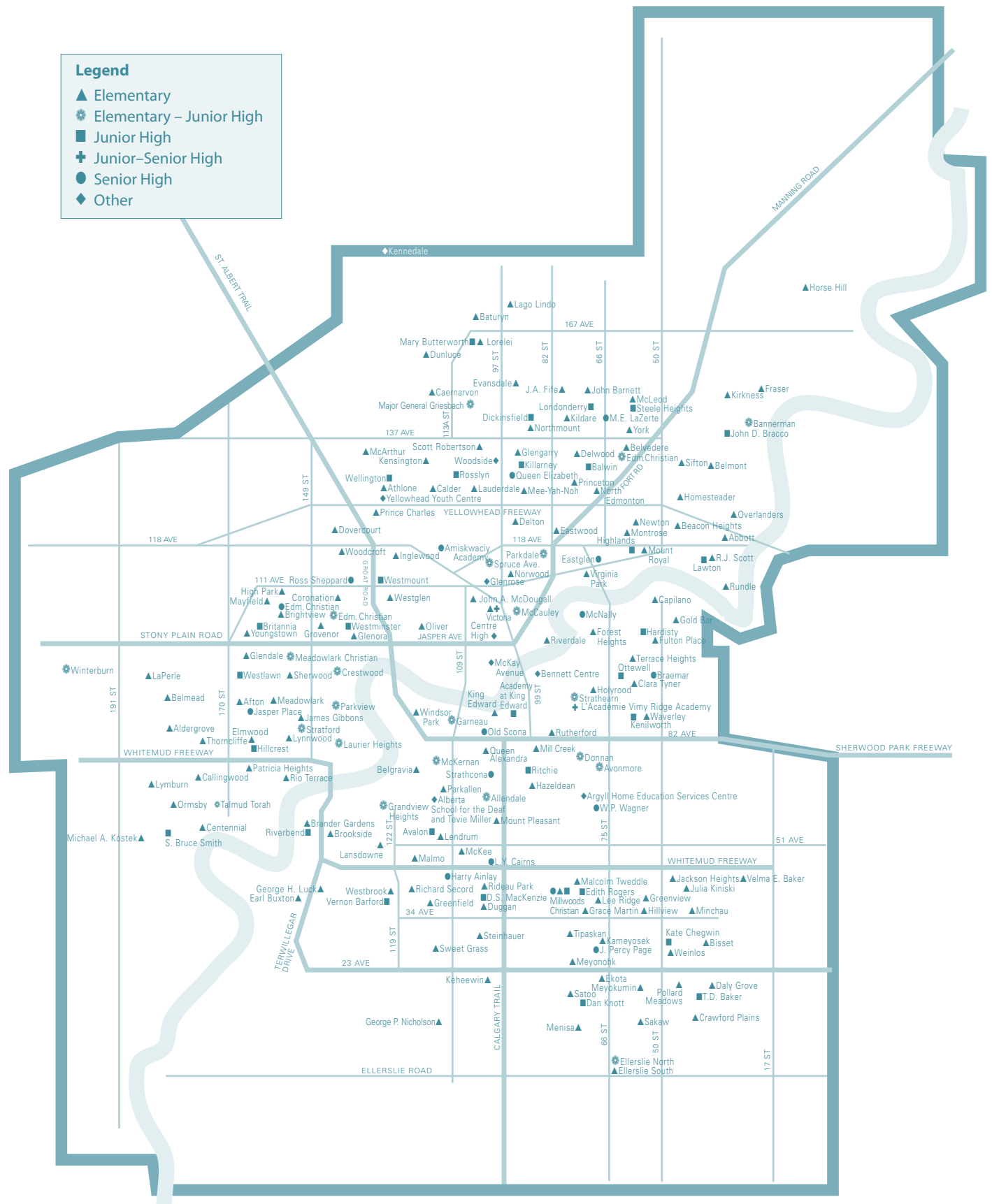
429-8007

Student Transportation

429-8585

Legend

- ▲ Elementary
- ⊛ Elementary – Junior High
- Junior High
- ⊕ Junior–Senior High
- Senior High
- ◆ Other



Communications • C05-2100

Superb Results *from all students*



EDMONTON PUBLIC SCHOOLS