

MINUTE BOOK

Board Meeting #3

Minutes of the Board Meeting of the Trustees of the Edmonton School District No. 7 of the Province of Alberta held in McCauley Chambers in the Centre for Education on Tuesday, December 3, 2013 at 2:00 p.m.

Present:

Trustees

Sherry Adams
Orville Chubb
Michelle Draper

Ken Gibson
Sarah Hoffman
Nathan Ip

Michael Janz
Cheryl Johner
Ray Martin

Officials

Jim Davies
David Fraser

Mark Liguori
Ron MacNeil
Kathy Muhlethaler

Darrel Robertson
Sandra Stoddard

Board Chair: Sarah Hoffman

Recording Secretary: Manon Fraser

A. O Canada 

B. **Roll Call:** (2:00 p.m.)

The Superintendent advised that all Trustees were present.

C. **Approval of the Agenda**

MOVED BY Trustee Janz:

“That the agenda for the December 3, 2013 board meeting be approved as printed.” (UNANIMOUSLY CARRIED)

D. **Communications from the Board Chair**

The Board Chair advised that the District Recognition Night for Service, Team and Merit Recognition Awards was taking place this evening. The event recognizes the outstanding accomplishments, contributions, and achievements of parent/community members, staff members and students.

MINUTE BOOK

The Board Chair advised that today was the International Day of Persons with Disabilities. This day honours people with disabilities and those who support them.

E. Communications from the Superintendent of Schools

The Superintendent advised that the District has launched the communication plan for the growth accommodation strategy. A number of supporting resources and documents are available on the District website that will help parents and community members understand the District's space issues and the accommodation of students. These materials will begin to inform the public about the consultation meetings that will be held in schools across the District from January 6 to 15, 2014, as well as provide information about an on-line survey and share ways in which parents and the public can get involved through social media.

The Superintendent stated his commitment to public engagement and his belief in the power of collective wisdom as we tackle the District's space and growth challenges. He provided reassurance that, while options will be shared during the engagement strategy as a starting point for discussion, input and feedback, there are no predetermined outcomes. The District website and survey reflects this as well.

F. Comments from the Public and Staff Group Representatives

The Board heard from the following speakers:

- Ms Michele Evans regarding space issues at Bessie Nichols School
- Mr. Travis Dugas regarding FNMI parent engagement

G. Reports

1. Edmonton Public Schools' Combined Three Year Education Plan and Annual Education Results Report

MOVED BY Trustee Chubb:

"That the Edmonton Public Schools' Combined Three-Year Education Plan and Annual Education Results Report, and the Summary of the AERR be approved for submission to Alberta Education." (UNANIMOUSLY CARRIED)

MINUTE BOOK

2. Review of 2012-2013 Results and 2013-2014 Plans and Revised Budgets

Trustees provided verbal reports regarding the results review meetings they attended.

3. Board Chair Discretionary Expenses Allowance Report 2012-2013

The report was discussed.

4. Presentation – Infrastructure

Trustee Janz requested that a copy of the PowerPoint presentation be posted for the public.

Trustee Gibson requested that a copy of Dr. Parker's accompanying verbal remarks also be posted.

Trustee Chubb requested that information be provided regarding student population projections based on school and geographic location.

Trustee Gibson requested that information be provided regarding what percentage of the expected student population growth will be met by adding the proposed new schools in the growth regions; e.g. does one new school in Lewis Farms address the need in the west end or does it address 10% of the need?

5. Capital Planning Methodology (Response to Request for Information #001)

Trustee Chubb requested that information be provided regarding the status of new school construction. Are the schools still on track for opening in 2016?

H. Other Committee, Board Representative and Trustee Reports

Trustee Adams, the Board's representative on the Edmonton Public Schools Foundation Board of Governors, reported on the following:

- She attended the launch of the full-day kindergarten program at Calder School on November 20, 2013.
- The launch of the full-day kindergarten program at Princeton School will take place on Thursday, December 5, 2013. The funding for this program comes from a \$100,000 investment made by the Edmonton Oilers Community Foundation.

MINUTE BOOK

- Foundation information session lunches are scheduled for:
 - Thursday, January 30, 2014 at Lauderdale School
 - Tuesday, February 11, 2014 at Mee-Yah-Noh School
 - Friday, February 21, 2014 at Mee-Yah-Noh School
- Volunteers are required to assist with the Kingsway Mall Wrap-and-Roll store front which will be open for the entire month of December.

I. Trustee and Board Requests for Information – None.

J. Notices of Motion

Trustee Gibson served notice of the following motion:

Given

- *the degree and timing of student mobility between First Nations schools and Edmonton public schools,*
- *limitations in student records following the student,*
- *this Board's commitment to building social capital through partnerships as a means to strengthen student success,*
- *the Provincial Government's commitment to result-based budgets rather than funding in separate silos, and*
- *the Federal Government's desire to strengthen First Nations education,*

That the Advocacy and District Priorities and Governance Committees consider the merits of developing a plan to engage the provincial and federal governments to provide the District additional resources to strengthen liaison between First Nations schools and Edmonton Public schools.

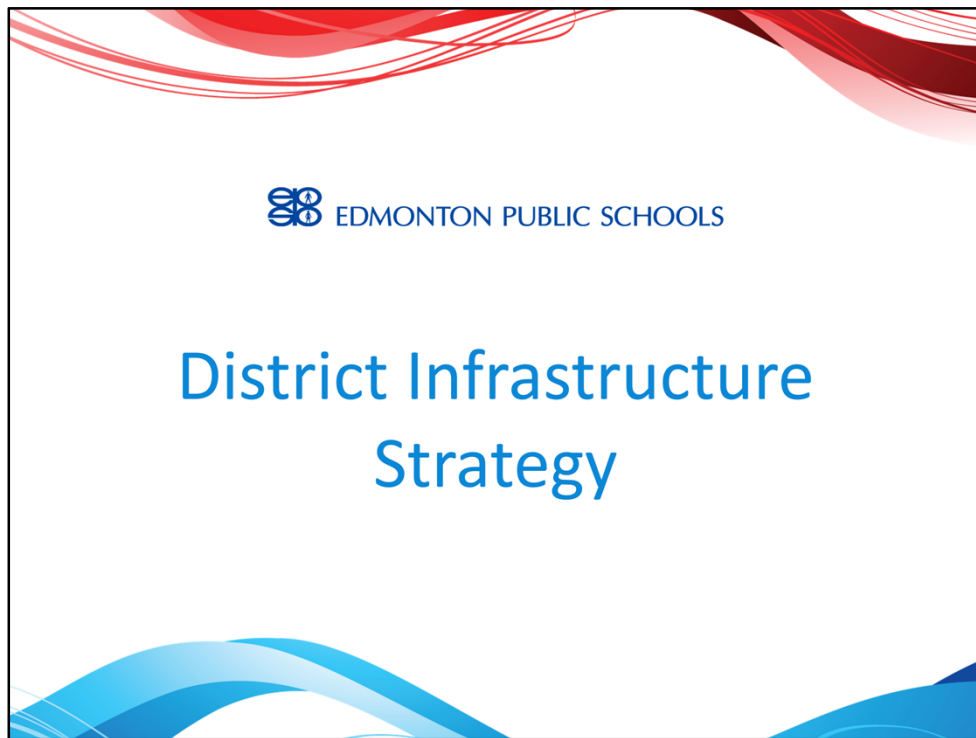
K. Next Board Meeting Date: Tuesday, December 17, 2013 at 2:00 p.m.

L. Adjournment (3:40 p.m.)

The Board Chair adjourned the meeting.

Sarah Hoffman, Board Chair

Dr. Sandra Stoddard, Director Governance
and Strategic Support Services



Good afternoon Madame Chair, Trustees .

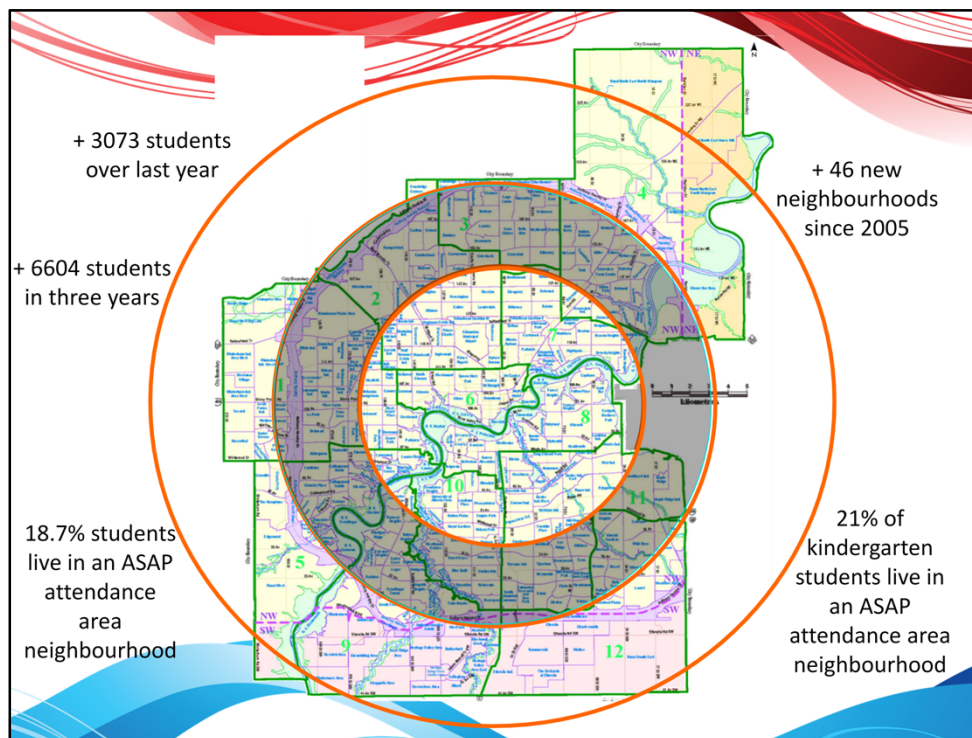
I'm pleased to provide you with this overview of a critical initiative for our district, that being the development of a Ten-Year District Infrastructure Strategy.

Context

- Rapid development in new areas
- Rapid rise in students in new areas
- Limited capacity in areas closest to growth
- Limited access to capital funding to build or expand new schools
- Aging school building infrastructure
- Limited access to capital funding for modernizing existing schools
- More excess space in the mature areas

In terms of current context, our district is experiencing:

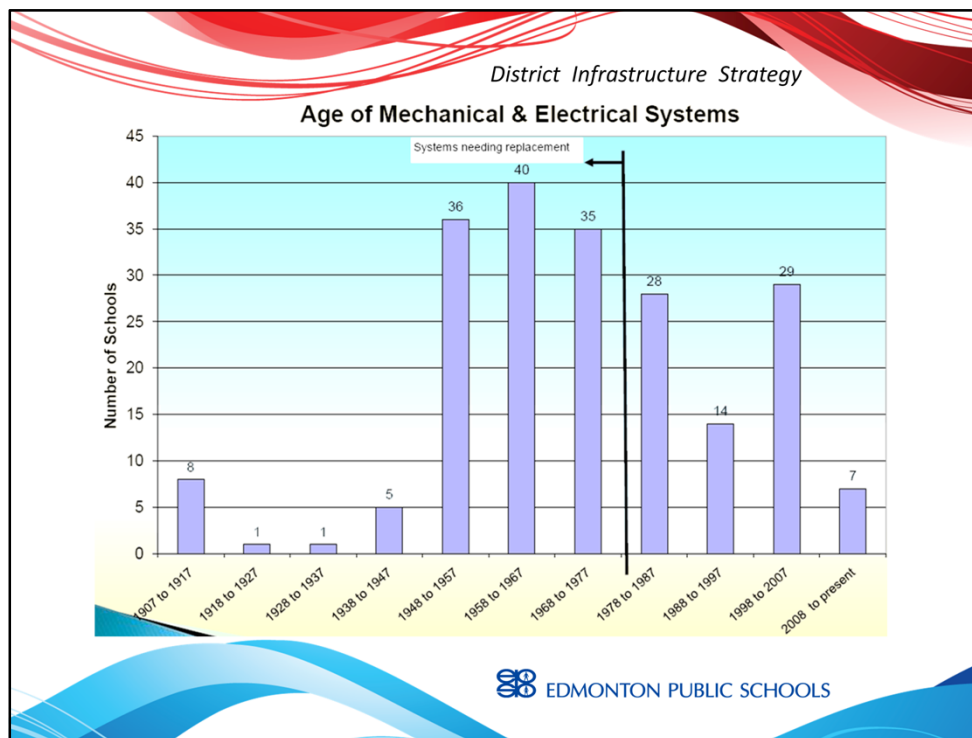
- Rapid development in new areas and a rapid rise in students living in these new areas;
- Limited capacity in existing schools to accommodate new students in areas closest to the growth;
- Limited access to capital funding to build or expand new schools, as with all areas and sectors of the Province;
- Excess capacity in mature areas of the City, but these buildings are aging rapidly and are ill-suited to meet 21st century learning and broader community use; and
- Addressing building conditions by modernizing or replacing aging facilities which is equally challenging in terms of access to capital funding.



- In terms of geography, our oldest schools are found in mature areas inside the middle ring.
- There is more flexibility in these areas in terms of extra space; however, fewer children live here and the facilities are some of our oldest.
- The darker shaded ring contains our middle-aged schools, and there is a mix of fairly mature areas with recent and currently developing areas.
- These areas are all inside the Anthony Henday, and they include six of our newest ASAP or provincial P3 schools.
- Three of our newest ASAP schools are outside the Anthony Henday, with two more scheduled to open in 2016.
- In the middle and outer rings, 46 new neighbourhoods generating students began development since 2005.
- Our district total enrolment grew by 6,604 students in the last three years, 3,073 this year over last year alone.
- 18.7% of all district students live in an ASAP attendance area neighbourhood

(16,200 of 86,554).

- 21% of the total Kindergarten student population live in an ASAP attendance area neighbourhood (1,438 of 6,849).
- Given the high percentage of young students in new areas and continued rapid new area development, the need to add new capacity will remain high for the foreseeable future.

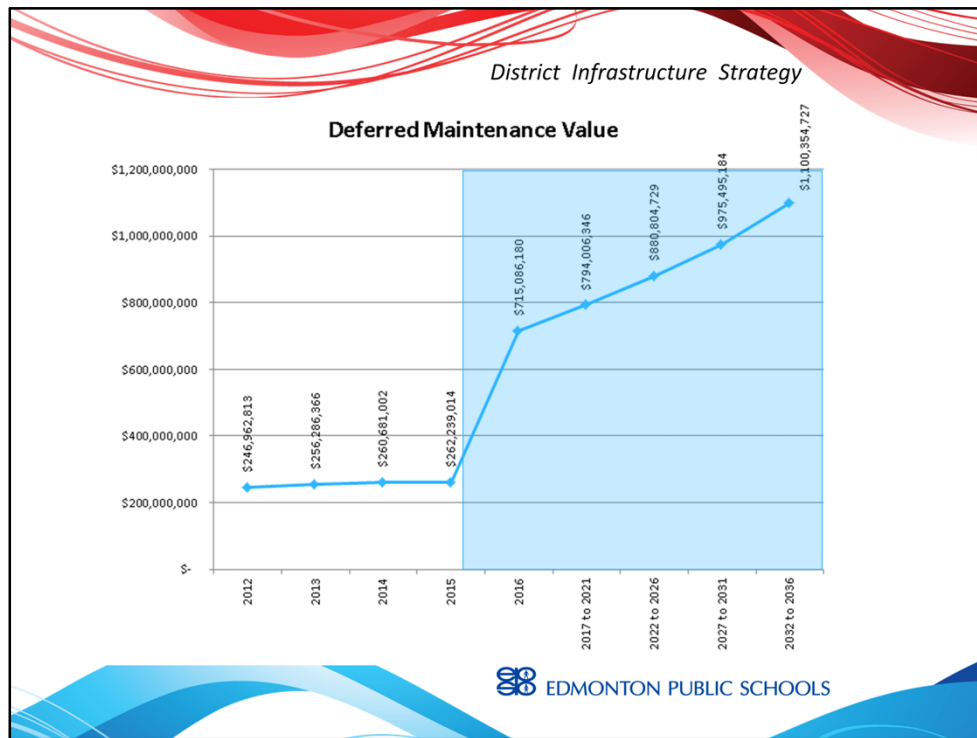


With respect to current infrastructure, our school buildings are aging rapidly.

By 2016, half of our school buildings will be 55 years old or older.

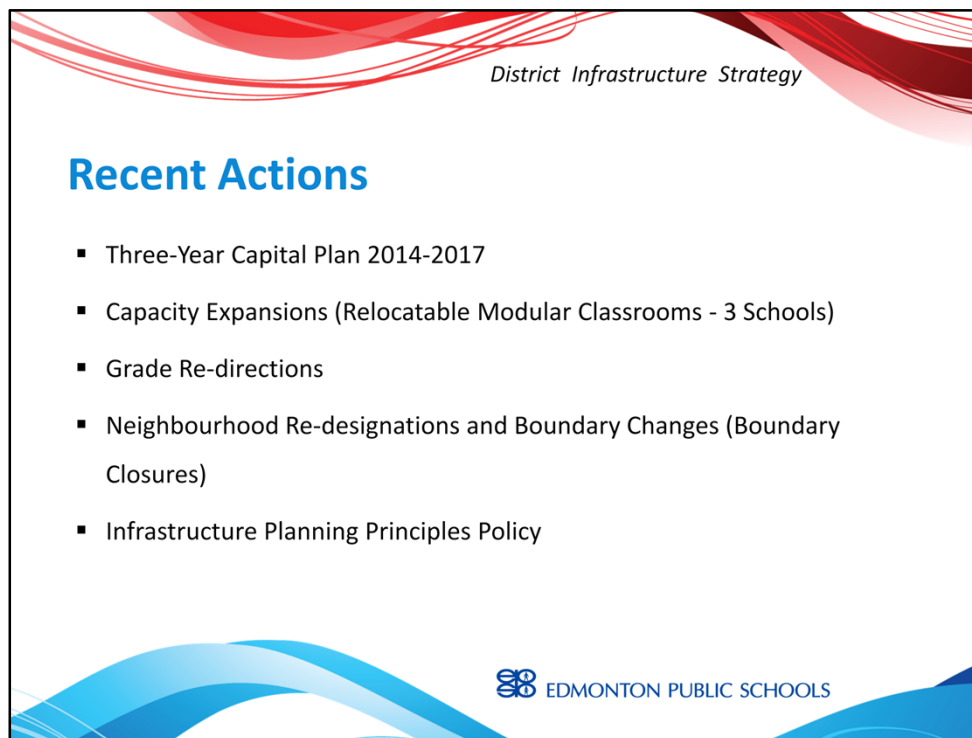
Many have not had significant reinvestment in them due to funding limitations, which contributes to the current deferred maintenance deficit.

For clarity, when you do not replace aging building components as they reach the end of the period they are expected to last, this is referred to as deferred maintenance.



Without investing a significant amount of money in our buildings in the next two years, the deferred maintenance value in total for our district will reach approximately \$700 million.

Continuing without adequate funding for capital renewal or modernizations, or reducing the amount of space we operate, we could reach \$1 billion as early as 2026 considering inflation and other conditions.



In terms of district actions to address some of these many pressures, the District continues to request capital funding through submission of an annual three-year capital plan.

Last year, the plan requested 14 new suburban schools, one addition, three new replacement schools in mature areas, and 16 school modernizations.

To date, two new schools were announced. The total value of the requests in the plan was \$570 million.

With respect to district controlled actions, we have implemented several measures to accommodate student growth or address over-demand at new schools in the absence of new school openings. For example:

- Five ASAP schools had additional portable (modular) classrooms added;
- Esther Starkman and A. Blair McPherson schools have had their junior high attendance areas reduced for this school year;
- The Grade 8 and Grade 9 classes at Esther Starkman and Johnny Bright schools were redirected to other junior high schools;

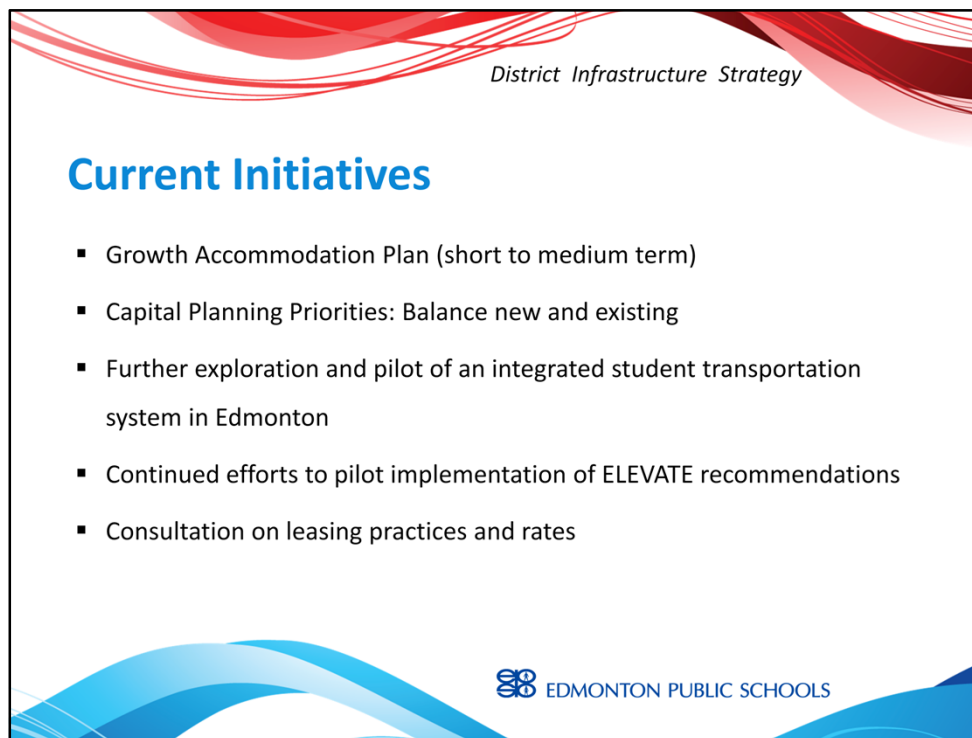
- Optimal enrolment limits and closed boundaries were put in place at some schools to manage enrolment pressures; and
- Madame Chair, the District has also designated new neighbourhoods early in their growth to schools with space, and removed some neighbourhoods to schools other than the ASAP schools.

Planning Principles

1. Accountability
2. Centres for Educational Excellence
3. Environmental Stewardship
4. Equitable Access
5. Fiscal Responsibility
6. Service to Community
7. Supports for the Whole Child

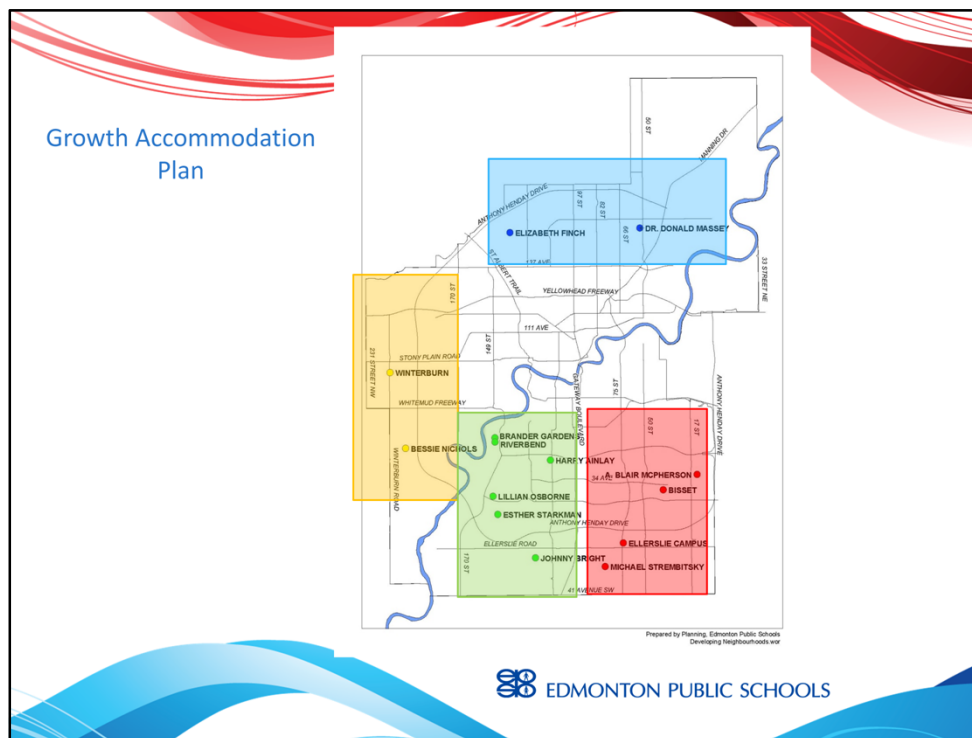
On September 17, 2013, the Board of Trustees adopted the Infrastructure Planning Principles policy.

These seven principles will guide development of future infrastructure planning and capital plans for the longer term.



In addition to the development of a District Infrastructure Strategy, including consultation, the District is involved in a number of initiatives which influence the development of the strategy. For example:

- The Growth Accommodation Plan will address overcapacity challenges for the immediate to medium term;
- Capital Planning Priorities, which provide a balance between serving new and existing communities, will be continued;
- Further exploration and piloting of an integrated student transportation system in Edmonton will continue;
- There will be continued efforts to pilot implementation of ELEVATE recommendations;
- A Real Estate Strategy will be developed; and
- There will be a review and consultation process on leasing practices and rates.



The Growth Accommodation Plan is designed to address the issue where several schools are experiencing enrolment pressures due to unprecedented growth in new and developing neighbourhoods.

This action is necessary as enrolment pressures are creating organizational and program delivery challenges at these schools.

The plan has been developed to address the demand for student learning spaces in four geographic areas: North, West, Southwest and Southeast

As you are aware, the District launched the stakeholder engagement process in the following manner:

- District principals were consulted on November 20;
- Public consultation began with the launch of the online feedback portal on Monday, December 2;
- Drop-in Public Feedback meetings will be held in the first two weeks of January;
- Recommendations will be provided to the Superintendent on January 22, 2014 with a report submitted to the Board of Trustees at the February 18, 2014 board

meeting; and

- The approved plan will be communicated to parents prior to the spring pre-enrolment process.

Capital Planning - A Balanced Approach

ATTACHMENT 1

- New Area Accommodation

- New Schools
- Expansions

- Mature Area Schools

- Modernizations
- Replacement Schools

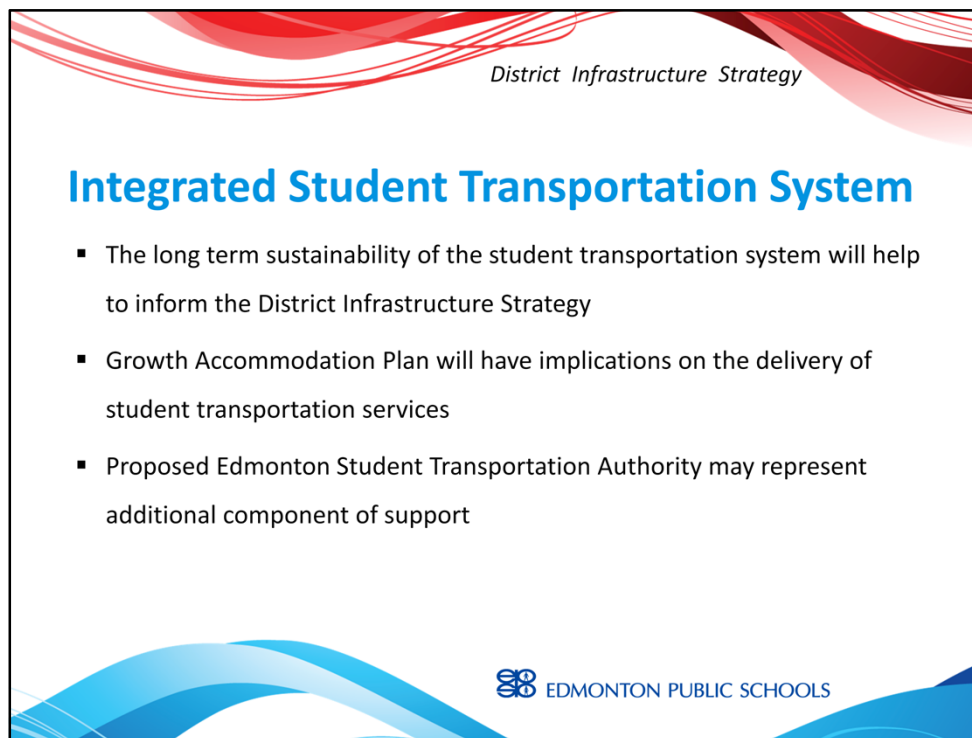
Proposed Three-Year Capital Plan 2014-2017 Aggregated Priorities

Proposed Priority	Project Description	Category	Sector	Costs (millions)
YEAR 1				
1	Ross Shoppard School	Modernization	HS	\$45.3
2	R.C. Heritage Valley	New	SW	\$18.1
3	R.C. Fernside Heights	New	SW	\$21.9
4	T.P. Leroy Farm	New	W	\$15.5
5	Vicar Ridge Academy	Modernization	HS	\$18.7
6	Balgarnie School	Modernization	SC	\$12.2
7	R.C. Wilton	New	SW	\$21.9
8	Lillian Osborne School (addition)	New (addition)	HS	\$312.1
9	R.C. Heritage Valley	New	SW	\$21.9
10	M.C. Cook School	Modernization	SC	\$6.5
11	Glenway School	Modernization	C	\$15.8
12	Mattie Macpherson School as determined by Infrastructure Strategy	New or Modernization	SC	\$180 (up to \$21.9)
13	Mattie Macpherson School	Modernization	C	\$12.7
14	Remington School	Modernization	C	\$1.9
YEAR 2				
15	Duluth School	Modernization	C	\$10.5
16	R.C. Parkdale	New	SW	\$18.1
17	R.C. Wilton	New	SW	\$21.9
18	R.C. Pilot Sound	New	SW	\$21.9
19	Mattie Macpherson School as determined by Infrastructure Strategy	New or Modernization	NE	\$180 (up to \$21.9)
20	Warrington School	Modernization	C	\$7.8
21	Spruce Avenue School	Modernization	C	\$9.1
22	Cowen School	Modernization	W	\$11.9
23	Thorncliffe School	Modernization	NE	\$12.9
24	R.C. Meadows	New	SE	\$21.9
YEAR 3				
25	R.C. South East	New	SE	\$21.9
26	R.C. Big Lake	New	SW	\$21.9
27	Alameda School	Modernization	SC	\$5.5
28	Gold Bar School	Modernization	SC	\$7.1
29	Laurier Heights School	Modernization	W	\$11.9
30	Mattie Macpherson School as determined by Infrastructure Strategy	New or Modernization	SC	\$180 (up to \$21.9)
31	R.C. Heritage Valley	New	SW	\$21.9
32	R.C. Lake District	New	SC	\$21.9
33	R.C. Elderkin Area Plan	New	SE	\$21.9
34	McKernan School	Modernization	SC	\$16.1

Madame Chair, with respect to ongoing accommodation planning, the District continues to submit three-year capital plans annually as required by the Government of Alberta.

The current Three-Year Capital Plan 2014-2017, includes a request for \$570 million in capital funding requests to the Province, for a total of 34 school facility projects.

The plan balances requests for projects in newly developing areas - 14 new schools and one addition at Lillian Osborne School valued at \$312 million, with \$258 million of requests to serve mature areas, including 16 school modernizations and three replacement schools.



With respect to other initiatives that could influence the Infrastructure Strategy, it is anticipated that the forthcoming District Accommodation Plan will have implications for the delivery of student transportation services.

Pressures on ride times and overall costs are expected, meaning it is likely that the gap between funding and the costs to deliver service to the District will increase.

In view of the foregoing, student transportation will be included in the District Infrastructure Strategy.

Any decision related to capital planning and program distribution will include transportation considerations.

In January 2014, the Board of Trustees will hear a presentation related to the feasibility of a collaborative service delivery model offered to all Edmonton students.

The proposed Edmonton Student Transportation Authority could serve students from both Edmonton Public and Edmonton Catholic boards.

Given the service capacity and scale of the proposed model, such a consortium may represent additional support for both boards as they face similar challenges moving forward.



Madame Chair, the Infrastructure Strategy will also need to reflect changing expectations of school facilities within communities, to be more than centres for K-12 learning.

The Mayor's Task Force on Community Sustainability included two of nine recommendations that specifically relate to education, which are to:

“Recognize that education is the foundation of a successful future for both communities and individuals, and that life-long learning is a foundation for community sustainability. Ensure that all community-driven plans include the delivery of life-long learning opportunities for all.”

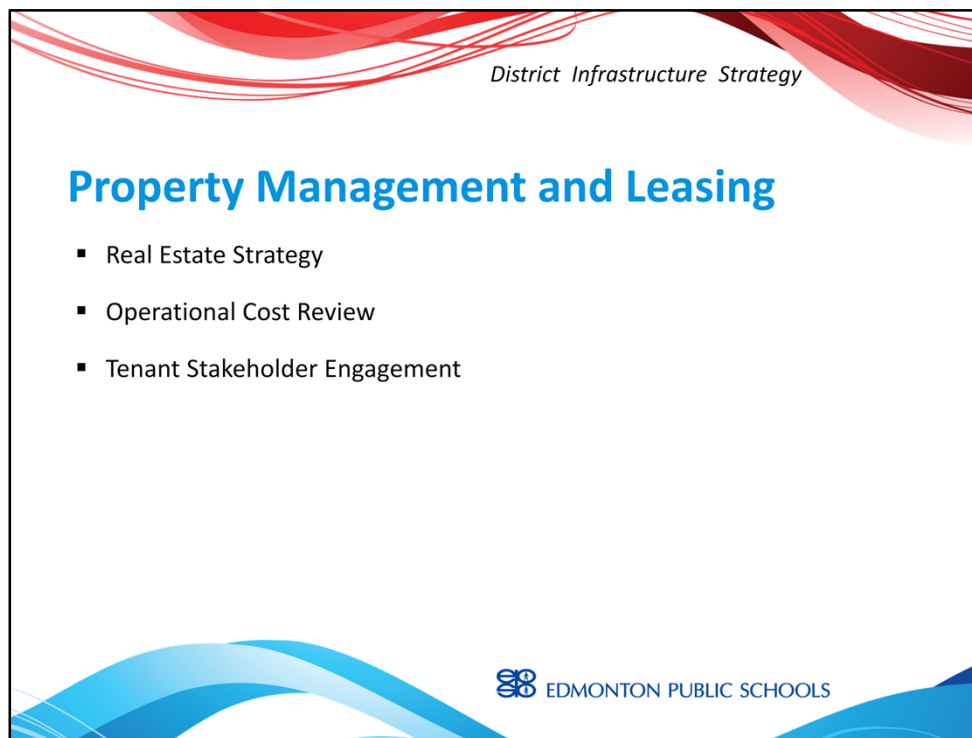
And to

“Encourage the Province of Alberta to provide innovative and sustainable infrastructure funding to guarantee that existing and new schools are modern, multi-functional and able to accommodate a diversity of programs.”

Since the release of the ELEVATE report:

- Edmonton Public School Board representatives met with City Council to discuss ELEVATE;

- The Superintendent and senior district administration are members of the Edmonton Community Sustainability Partnership (ECSP) Steering Committee;
- A joint meeting between senior administrators of the City of Edmonton and the three school districts was held in June 2013, to share capital plan information and to jointly plan and make recommendations; and
- Senior City administration invited senior school board administration to collect school board feedback on developing an Infill Action Plan Terms of Reference.



Also parallel to development of the Infrastructure Strategy, a Real Estate Strategy will be developed which will:

- Set direction in terms of operation and retention of closed school properties;
- Include a review of all space the District leases externally;
- Review and confirm the cost to operate our space and reinvest in capital renewal; and
- Review and develop strategies for establishing future lease rates in consultation with stakeholders and industry.

The District values the role that tenants and partner services can play in terms of providing additional supports and services to families with school-aged children.

However, this must be achieved in a fashion that ensures that costs for use of space are recovered, which is not occurring in the present structure.



The ultimate goal of all this work is to ensure that:

- We have high quality learning environments, equitably distributed across the District;
- All district operations are aligned to effectively support the infrastructure strategy;
- Infrastructure needs are fully funded; and
- We have space for partnerships and community interests.



Madame Chair, the District Infrastructure Strategy will be all encompassing, and require significant consultation and review, as it will examine and impact all aspects of district infrastructure.

Furthermore, implementation of an approved District Infrastructure Strategy will require significant time to implement.

It will involve collaborative planning with external partners, such as the City of Edmonton, the Government of Alberta, and the community.

The ultimate goal as previously stated is to ensure that all our students are provided with high quality learning environments.

Madame Chair, this concludes a brief overview to infrastructure initiatives.

At this time, I'd be pleased to respond to any questions you may have.