

DATE: June 20, 2023

TO: Board of Trustees

FROM: Infrastructure Committee - Trustee O’Keefe, Trustee Sumar, Trustee Kusiek (Chair)

SUBJECT: Infrastructure Committee Update

ORIGINATOR: Trustee Julie Kusiek, Chair of Infrastructure Committee

REFERENCE [Trustees’ Handbook, Section 6.1.3](#) - Board Committees, Policy Review Committee
[Infrastructure Committee 2022-2023 Work plan](#)

ISSUE

The Infrastructure Committee is responsible for developing and presenting to the Board of Trustees (the Board) an annual work plan. This report summarizes the committee’s accomplishments over the 2022-2023 school year.

BACKGROUND

The Board approved the membership of the Trustee Infrastructure Committee at the June 21, 2022, Organizational Board meeting. The Infrastructure Committee was formed to assist the Board in further understanding the issues, impacts and next steps related to infrastructure over the course of their term. A Terms of Reference was developed and actions were informed through the development of an annual work plan. This work plan was approved at the October 18, 2022 Board meeting.

CURRENT SITUATION

To ensure that the Infrastructure Committee’s activities were aligned with the approved work plan and to keep track of progress throughout the year, the Infrastructure Committee created a work plan tracker. This work plan tracker included each of the approved work plan activities and sub-activities.

Completed activities for Infrastructure Committee in 2022-2023 include:

- Hosting a bus tour for elected provincial and municipal officials to learn more about EPSB’s infrastructure needs, with a focus on the need for new schools and more space. This was a highly successful event with several MLAs and City Councillors in attendance. See Attachment I for bus tour details.
- Assisted with greenhouse gas reduction targets for the Division, as part of the Corporate Climate Leaders Program. Confirmed that Division staff will bring an annual update to the [Division Energy and Environment Strategy Update and Emissions Reduction Targets](#), beginning in early fall 2024.
- Trustees from the Infrastructure Committee also attended several sessions by Climate Caucus, a network for local elected officials across Canada including school board trustees, on a range of climate change topics including climate communications, climate change in curriculum and funding opportunities for school authorities. Trustees also shared our recently approved Division Energy and Environment Strategy Update and Emissions Reduction Targets report with Climate Caucus.

Activities in progress and recommended for continuation for the 2023-2024 Trustee Infrastructure Committee include:

- Work on “schools as community hubs” both in terms of infrastructure and operations. The current committee discussed this concept at its March 24, May 9, and May 31 meetings and has requested that Infrastructure staff bring forward an information report in fall 2023.
- Work with the partners including parent groups, the City of Edmonton, Province of Alberta and advice of Division staff to streamline processes and overcome challenges to the current playground construction and renewal process. The Trustee Infrastructure Committee developed an advocacy plan for playground maintenance and construction based on a briefing on the current playground situation by Division staff. The Infrastructure Committee has begun approaching key stakeholders to gather more information and consider collaboration on next steps.
- Revisit, and update where necessary, the foundational work done by previous Infrastructure Committees. The Infrastructure Committee requested an information report that updates previous work on the block funding model and is currently working on a recommendation report for Board consideration regarding potential renewed provincial advocacy for a block funding model.
- Work in collaboration with the City of Edmonton and other partners to improve active transportation options for students and staff to Division buildings. A Trustee from the Infrastructure Committee will be attending a bike event hosted by Councillor Michael Janz on Saturday, June 3, 2023. The Infrastructure Committee suggests further work on active transportation be considered in 2023-2024.

Activities from the 2022-2023 work plan not yet completed include:

- Participate in the review of EA.BP Infrastructure Planning Principles, with an environmental and active transportation lens. This work was deferred to align with the Policy Review Committee’s work plan and schedule.

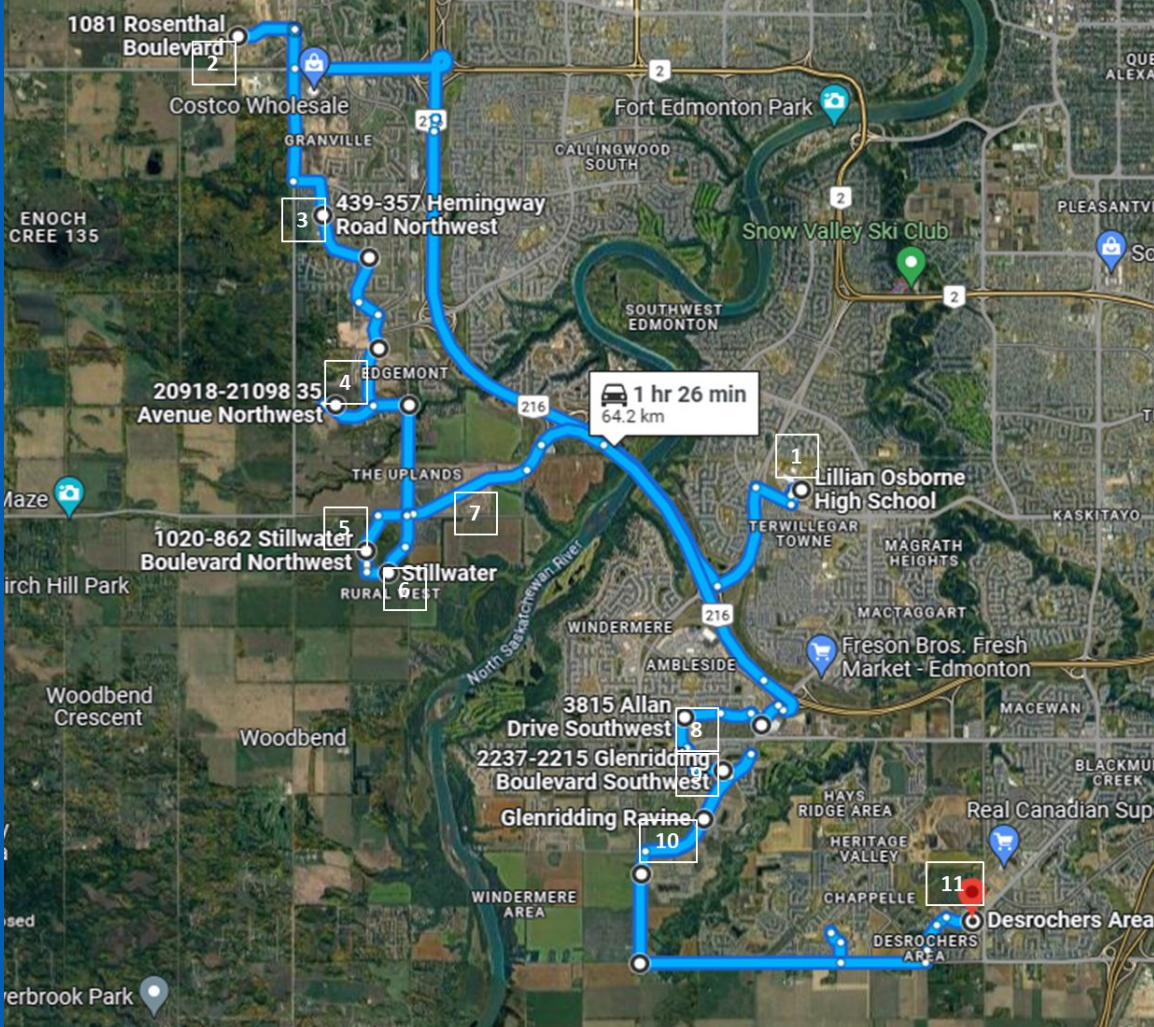
KEY POINTS

- The Infrastructure Committee completed one-time projects that helped to raise the profile of the Division’s infrastructure needs. This includes the bus tour with MLAs and City Councillors, and guidance towards the Division Energy and Environment Strategy Update and Emissions Reductions Targets.
- Significant progress was also made towards multi-year infrastructure projects. This includes substantive work related to schools as community hubs, playground renewal and construction funding and a block funding model for Division infrastructure. These projects are all recommended for next year’s Trustee Infrastructure Committee to continue.
- One item in the work plan has not yet been completed. Review of EA.BP Infrastructure Planning Principles has been deferred to next year, to align with Policy Review Committee’s timelines.

ATTACHMENTS and APPENDICES

ATTACHMENT I Infrastructure Bus Tour Package

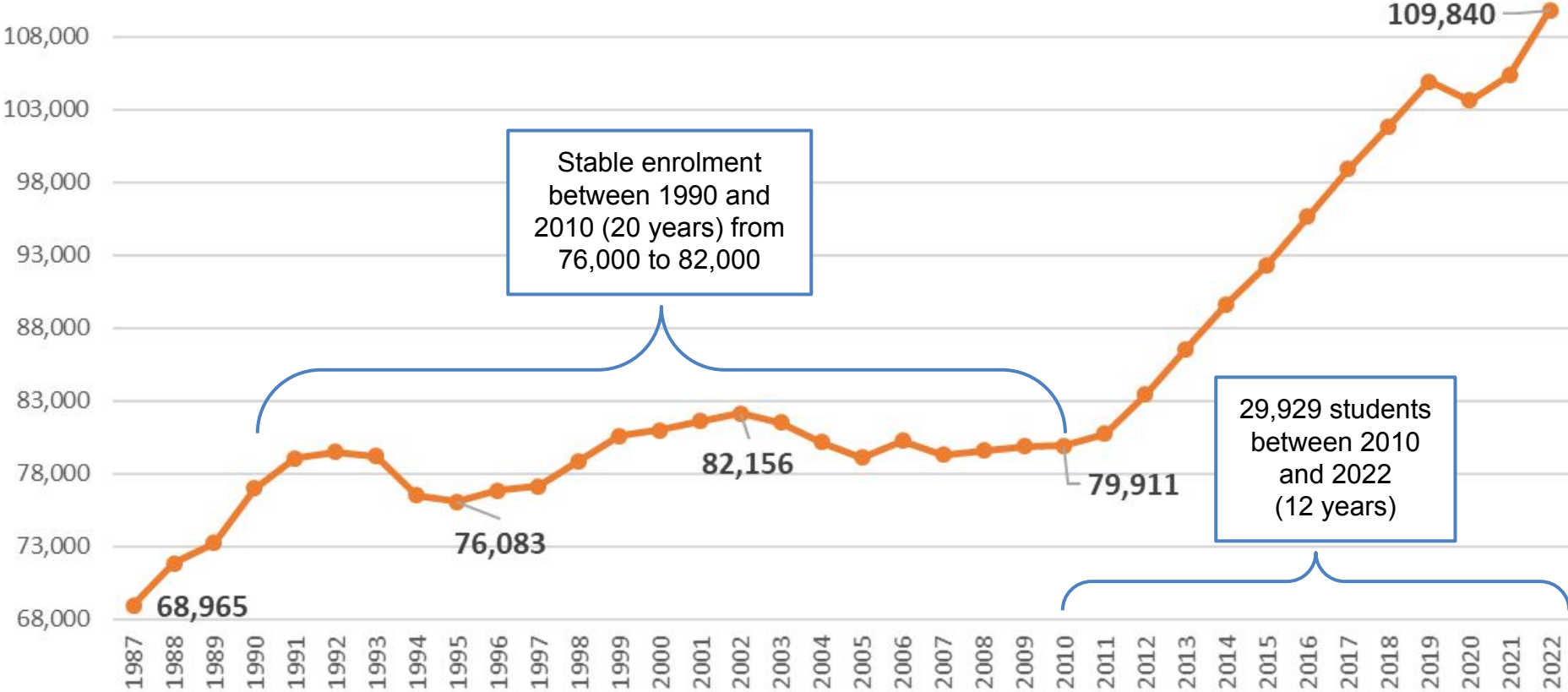
JK:jk



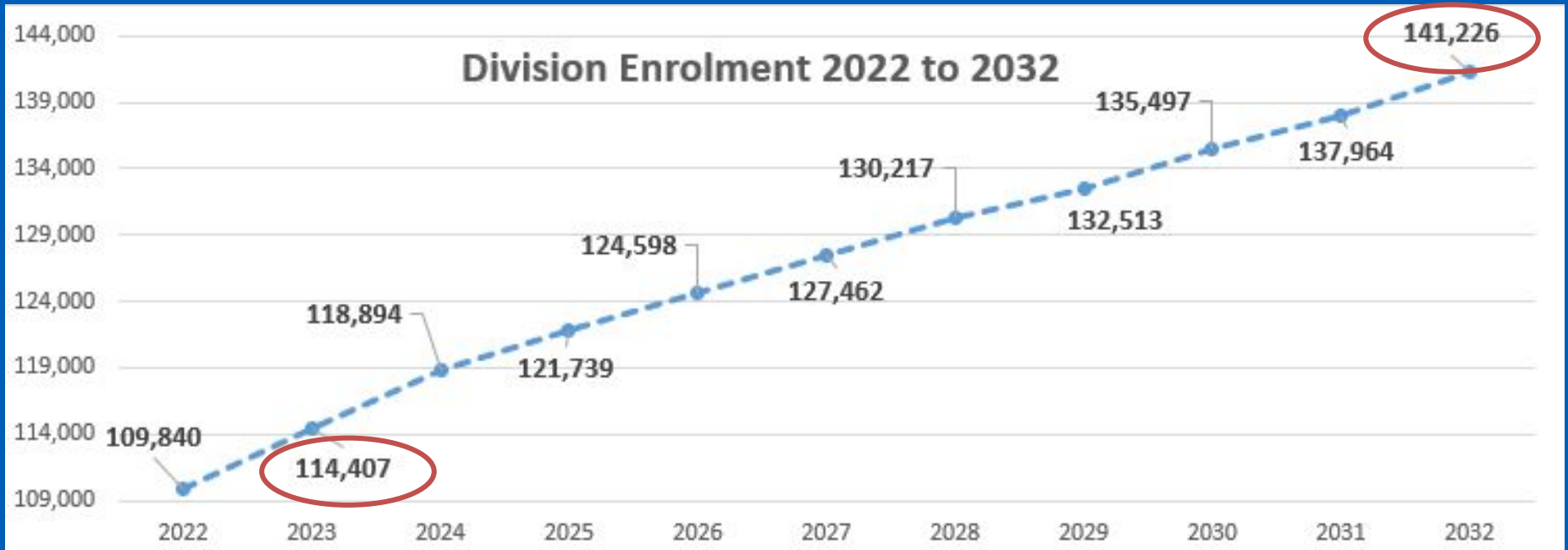
EPSB Trustees Tour: March 24, 2023

Historical Enrolment: How We Got Here

Division Enrolment 1987 to 2022



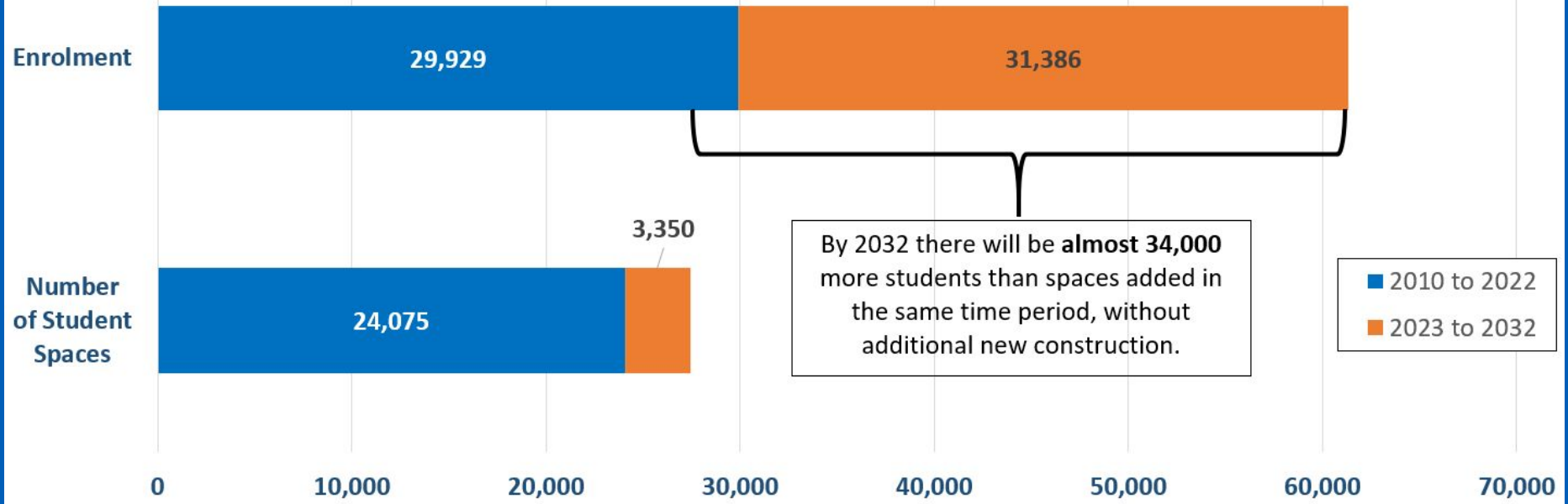
Projected Enrolment: Where We Are Going



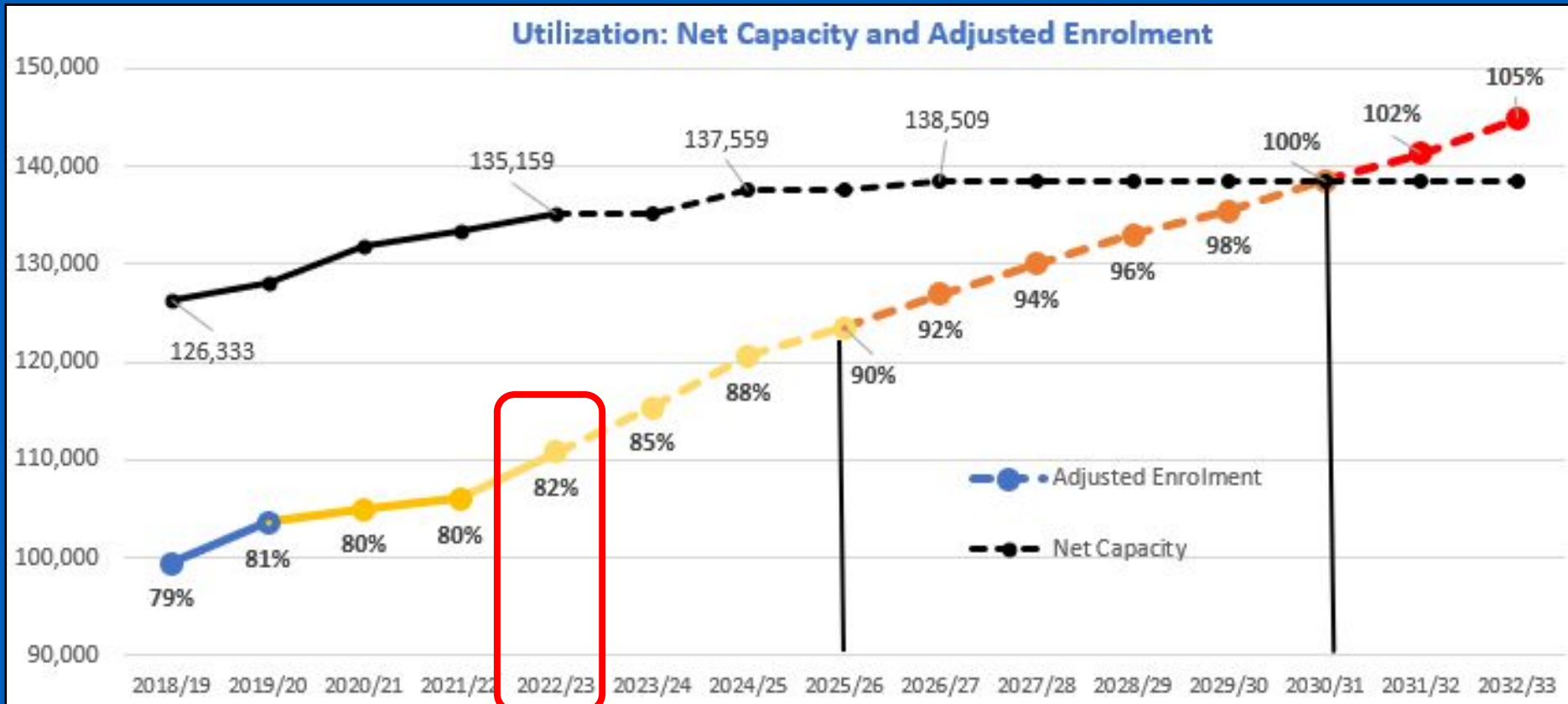
- These projections are considered conservative, at least for the next few years.
- Projections continue to point to increases across all grades as immigration continues to remain strong.

Enrolment and Seats: The Gap is Widening

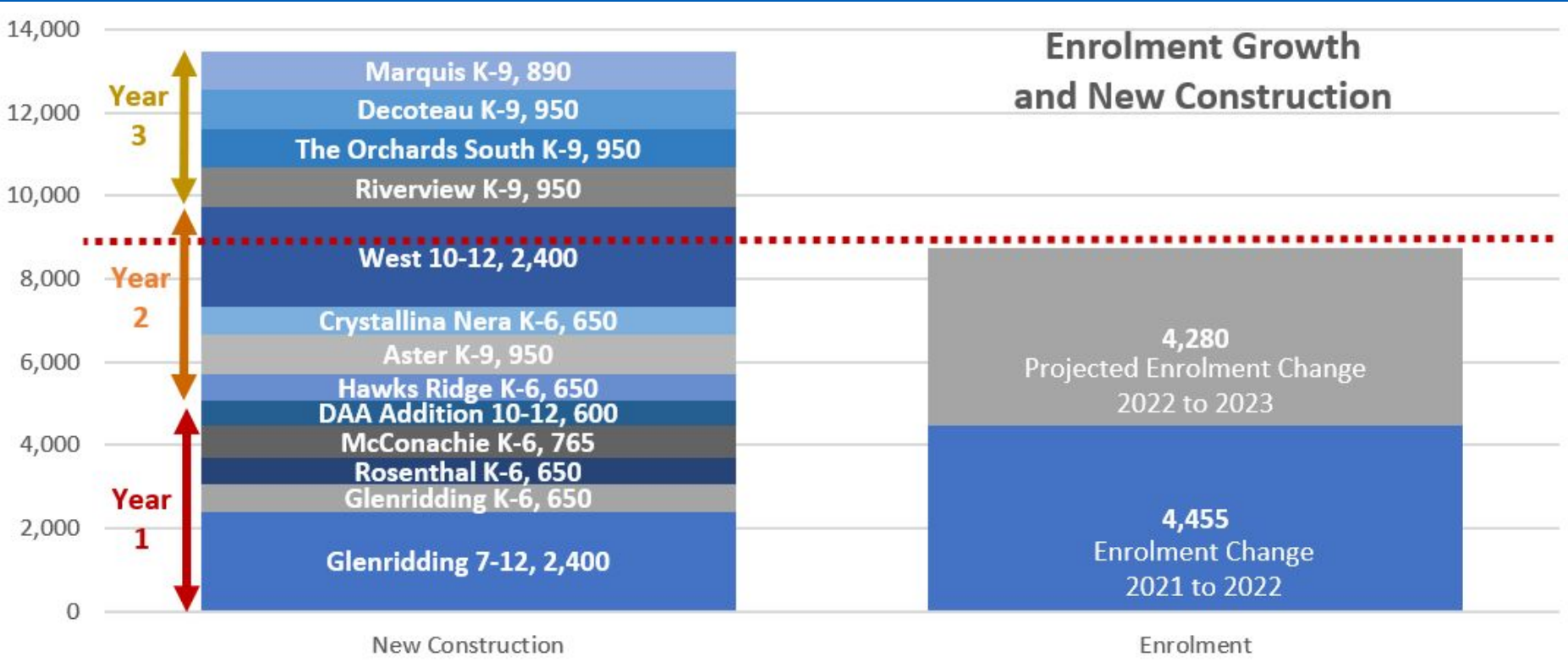
Division Enrolment and Funded New Construction Student Spaces
2010 to 2032



Projected Utilization: Where We Hit the Wall



Enrolment and Seats: Could fill Year 1 and 2

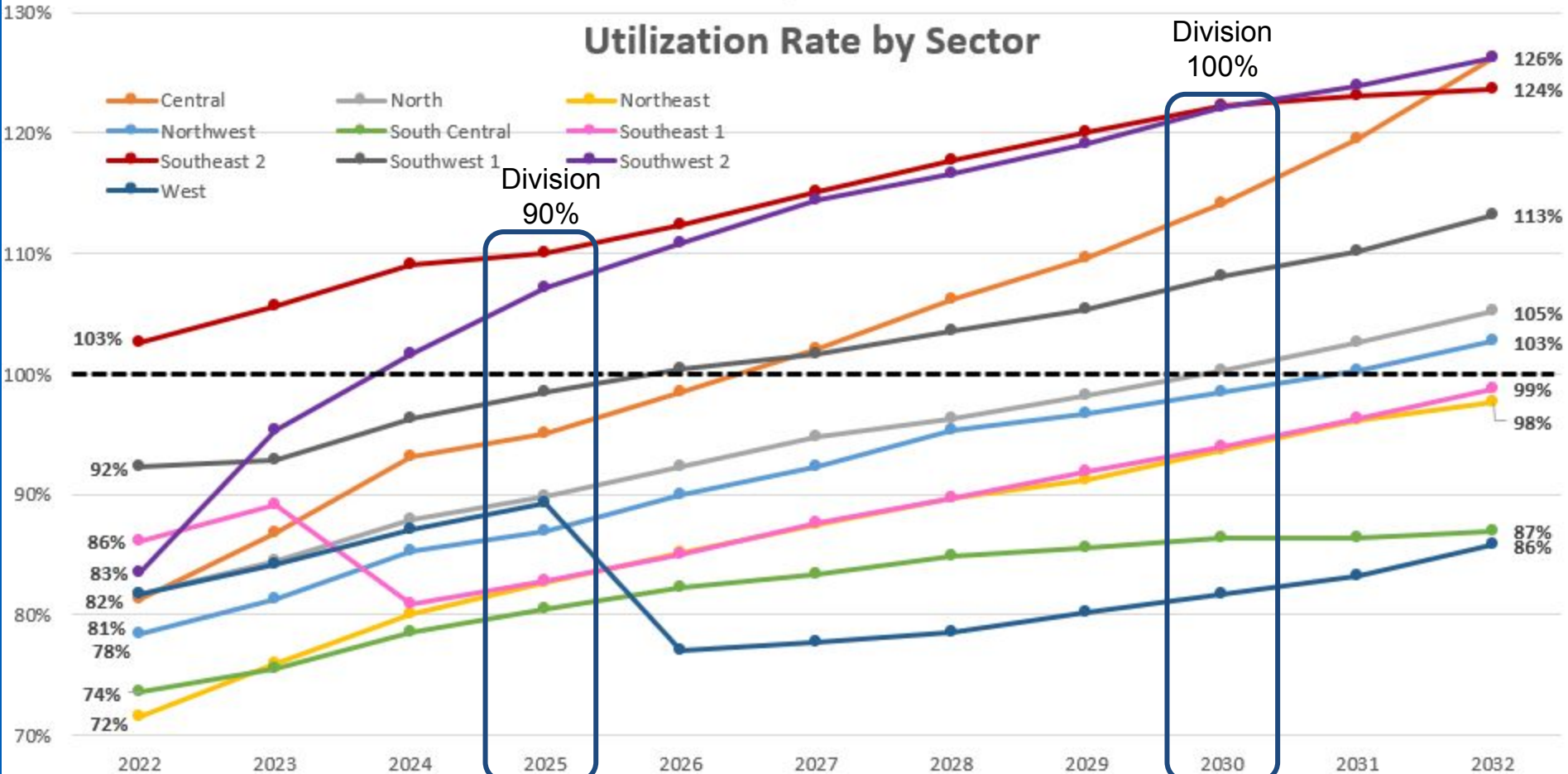


Enrolment and Seats: Not Keeping Pace



Utilization by Sector: The Distribution of Space

Utilization Rate by Sector

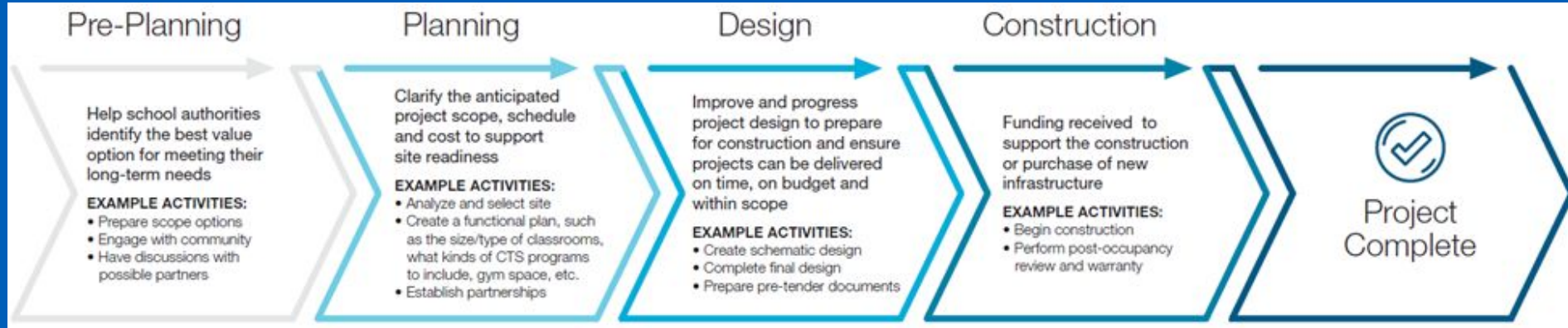


Sector Enrolment: Where we're headed

Sector	Current Utilization 2022	Projected Utilization 2032
South Central	74%	87%
Southeast 1 (The Meadows High School, Aster K-9)	86%	99%
Southeast 2 (The Orchards South K-9)	103%	124%
Southwest 1	92%	113%
Southwest 2 (Glenridding 7-12, Glenridding Heights K-6, Dr. Anne Anderson School Addition)	83%	126%
West (Edgemont K-9, Riverview K-9, Riverview 10-12)	82%	101%

Updated Projections to 2032

Funding Announcement: Which Projects and What Level?



McConachie
7-9

Site 9
Glenridding
Heights K-6

Site 1
Rosenthal
K-6

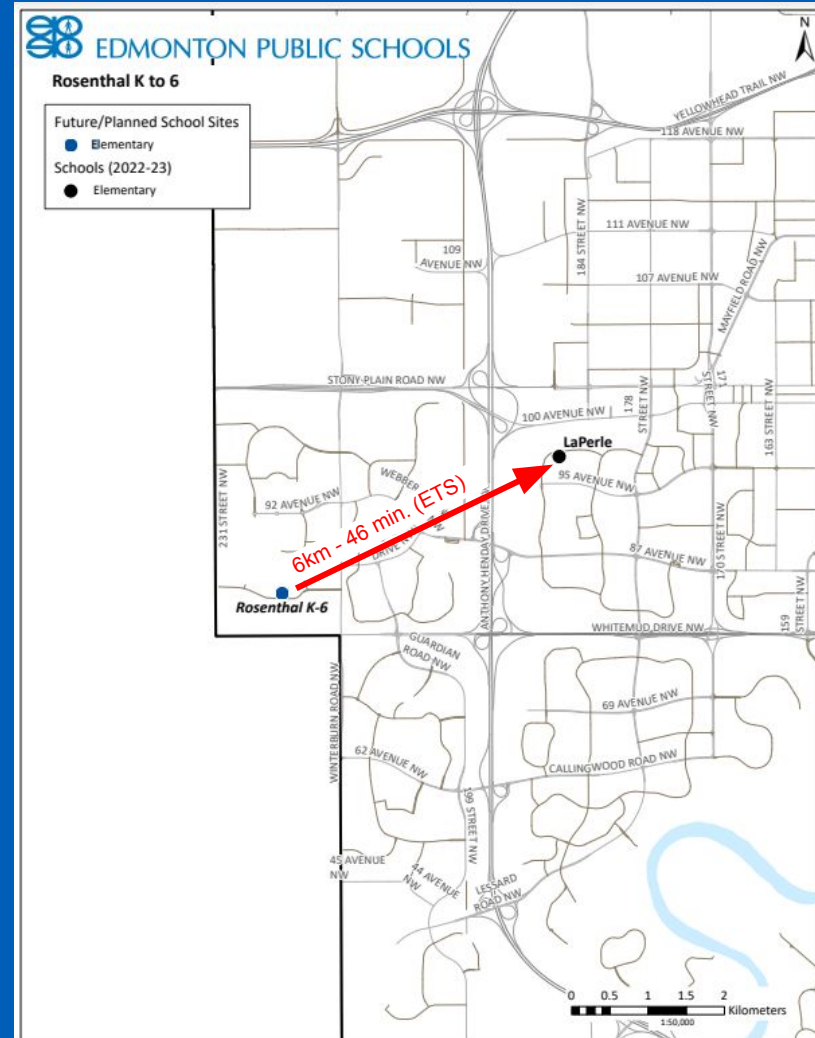
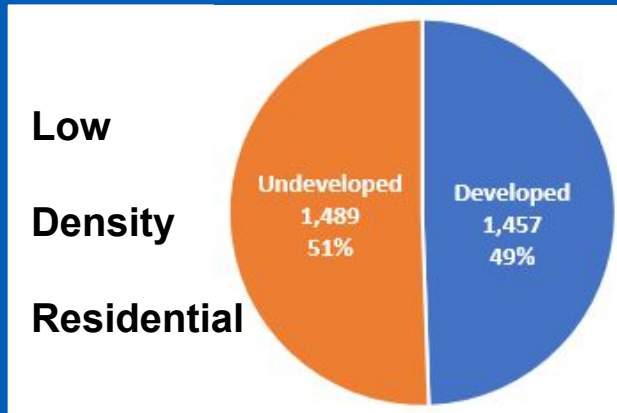
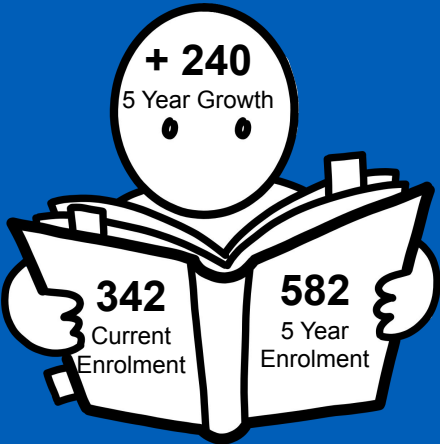
Site 10
Glenridding
(Windermere
Campus)
7-12

Site 3
Edgemont
K-9

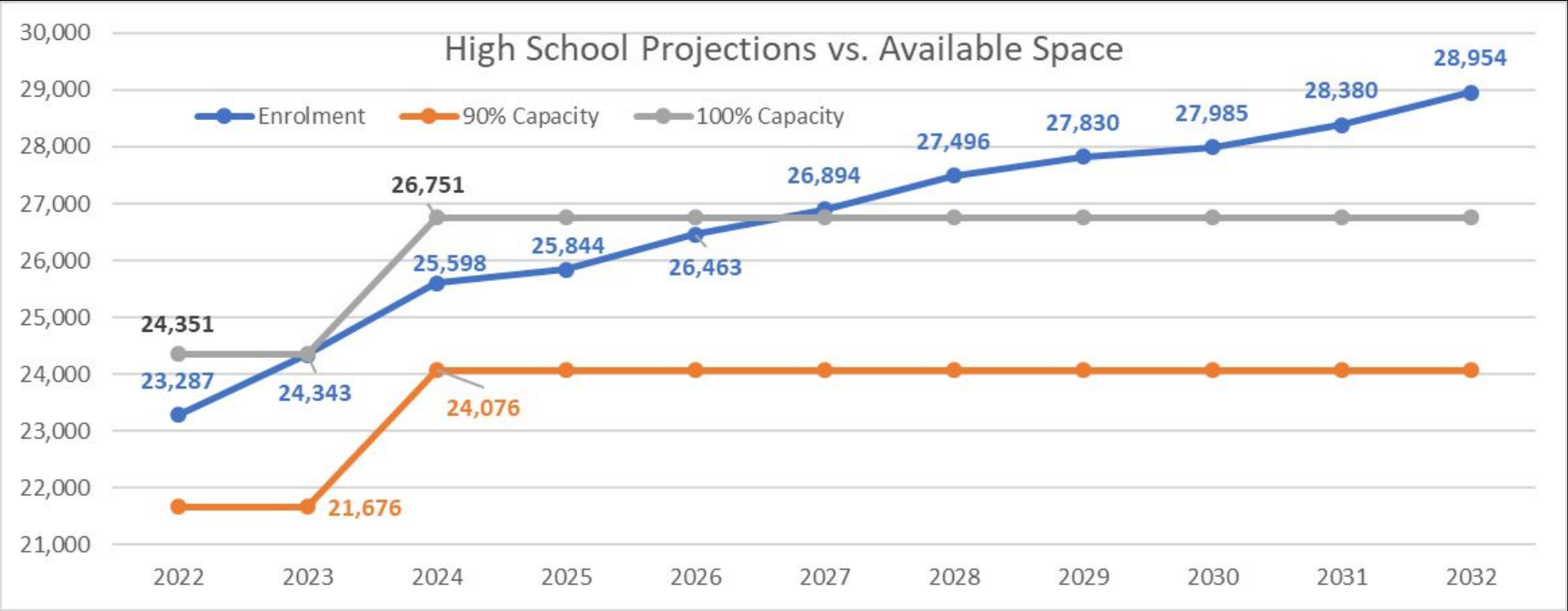
Site 2

Rosenthal: At a Glance

Current Designated School	Utilization	Distance
LaPerle	101%	6 km

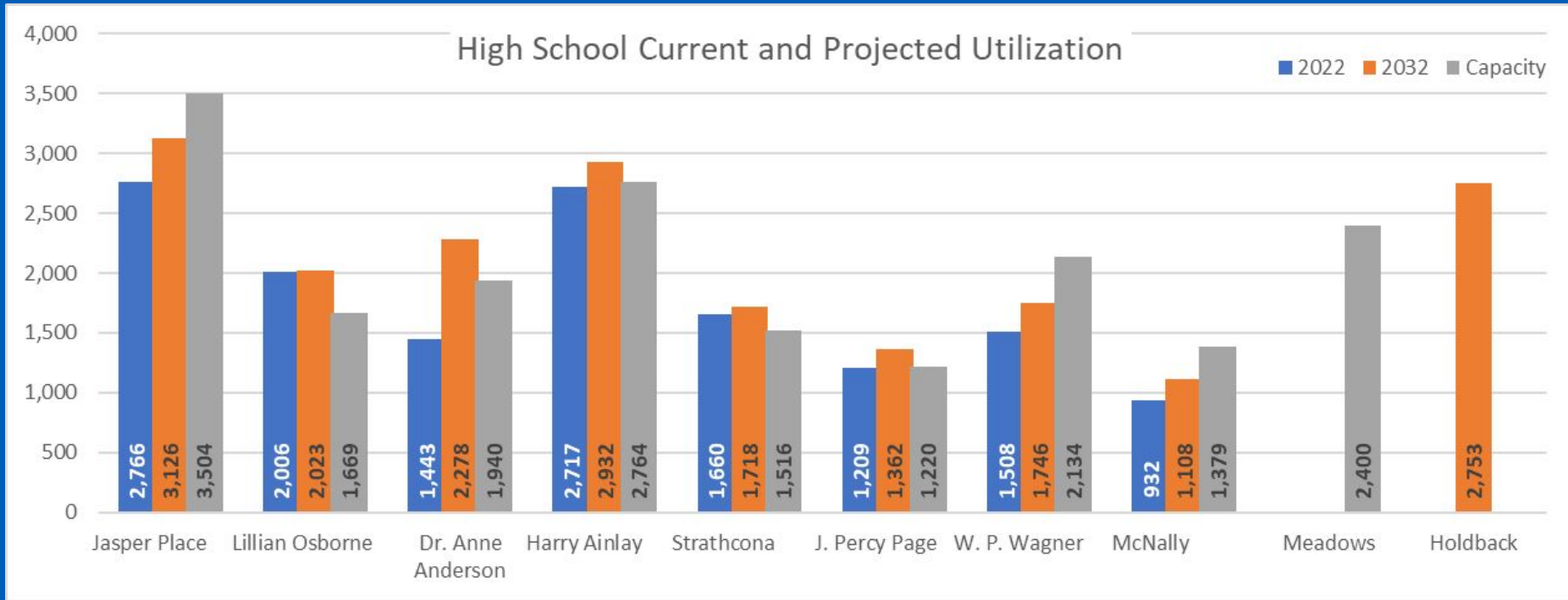


High School Enrolment: Where we're headed



Updated Projections to 2032

High School Enrolment: Where we're headed

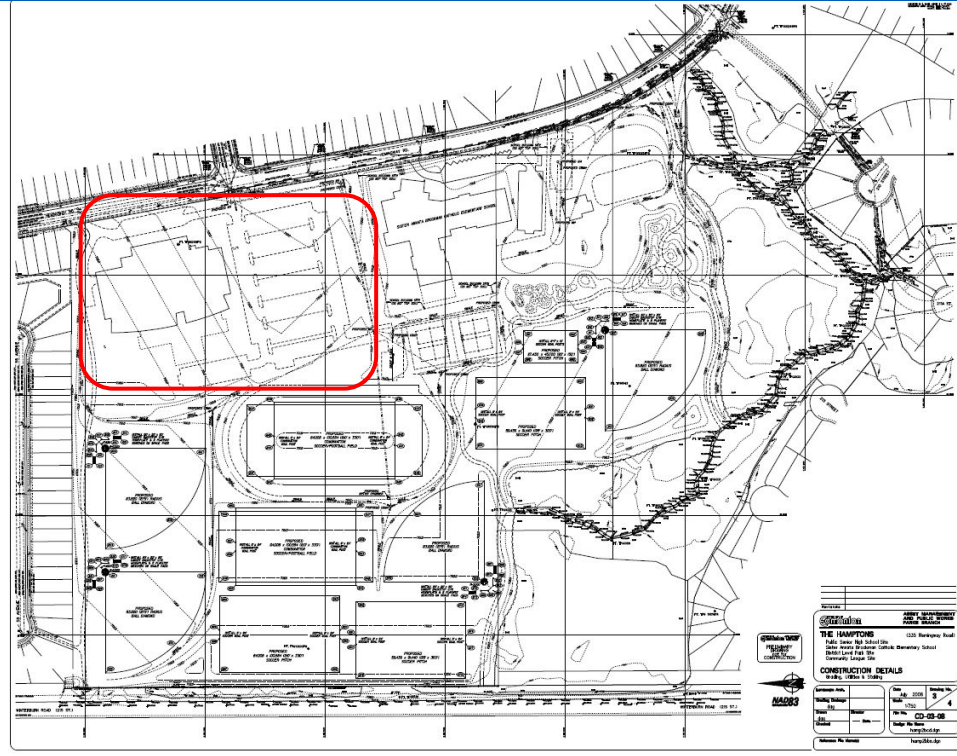


Updated Projections to 2032

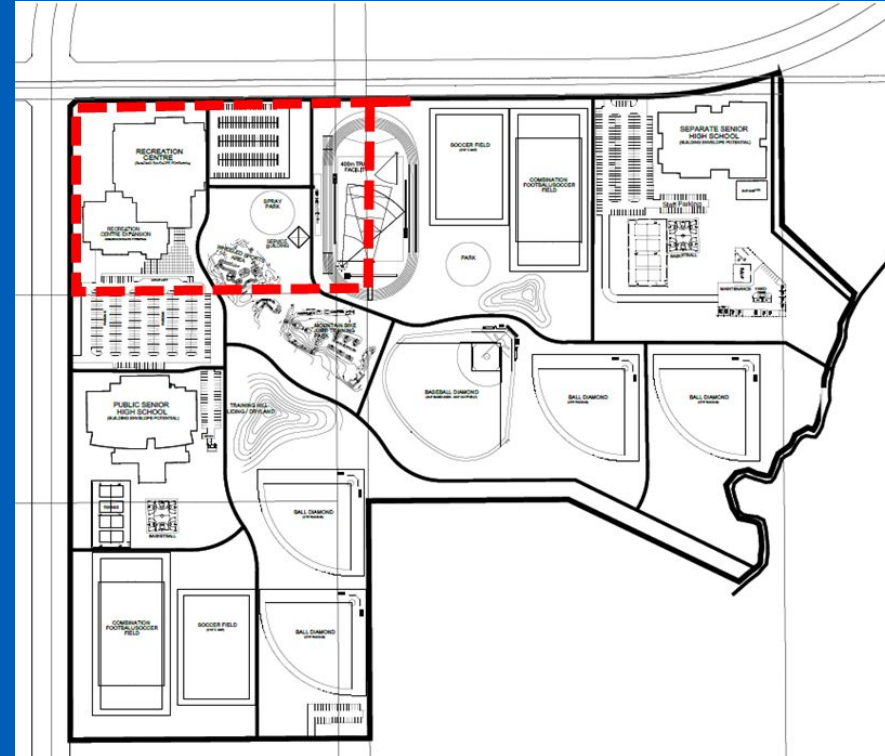
Assumes Growth Control Measures to limit Enrolment

West 10-12 Site Options

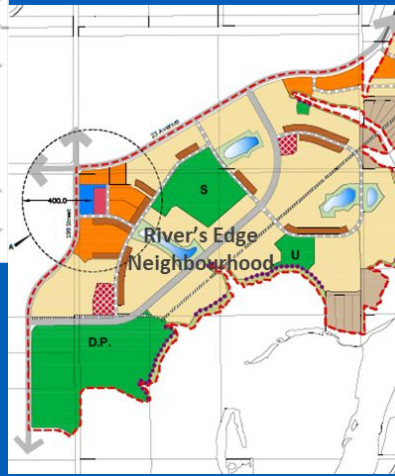
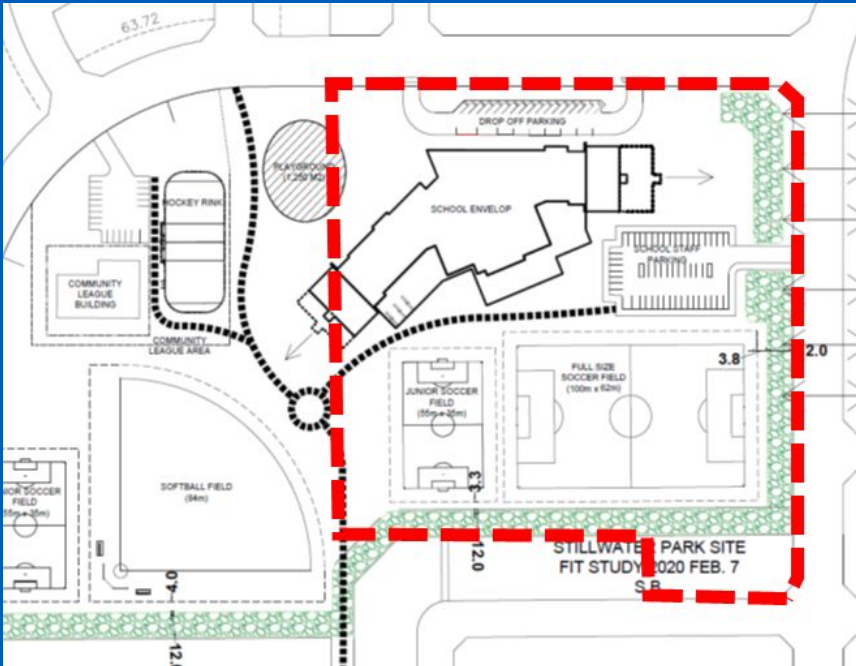
Site 3: The Grange Campus



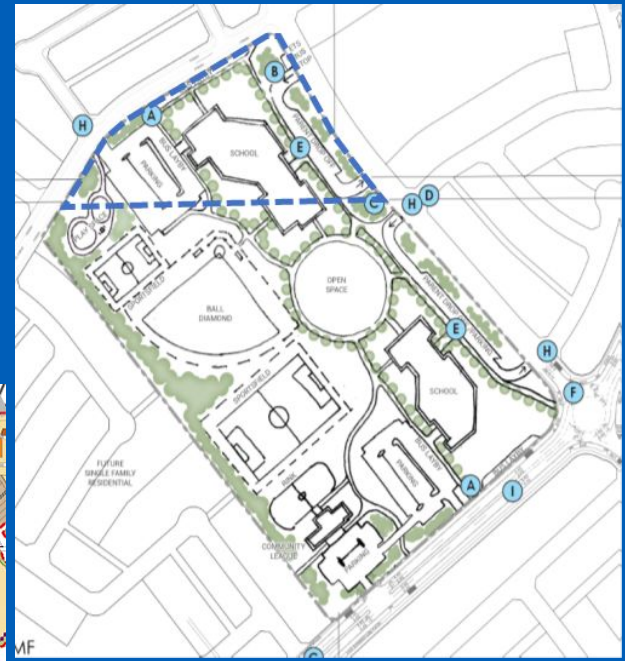
Site 6: Riverview Campus



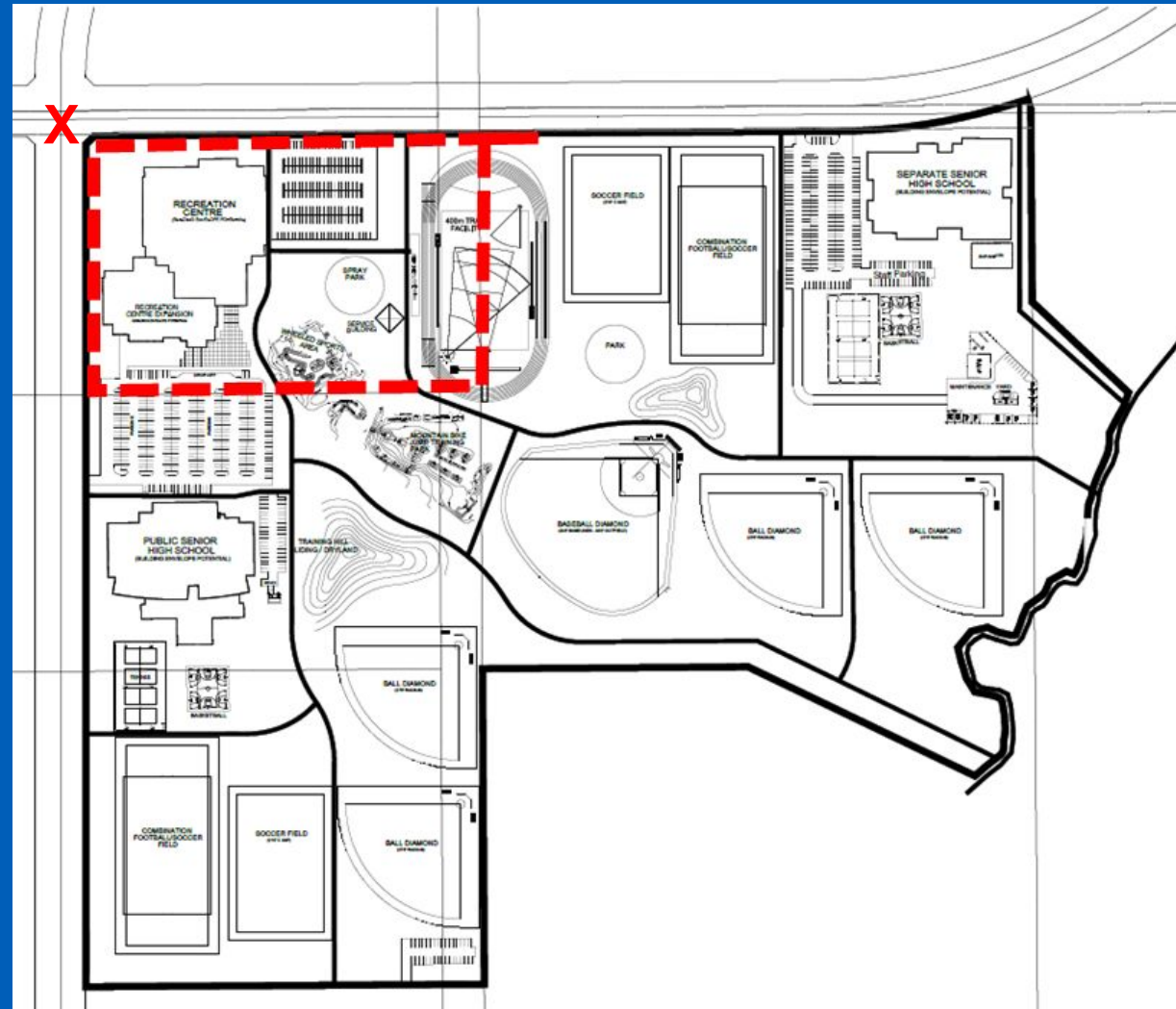
Site 5 Stillwater (Riverview K-9)



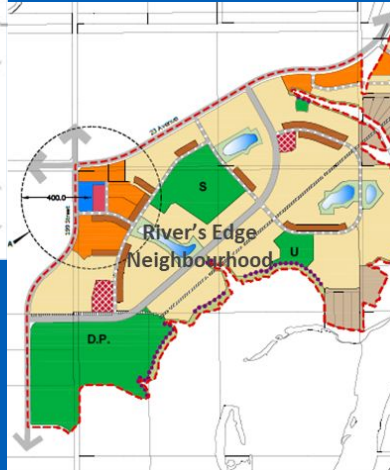
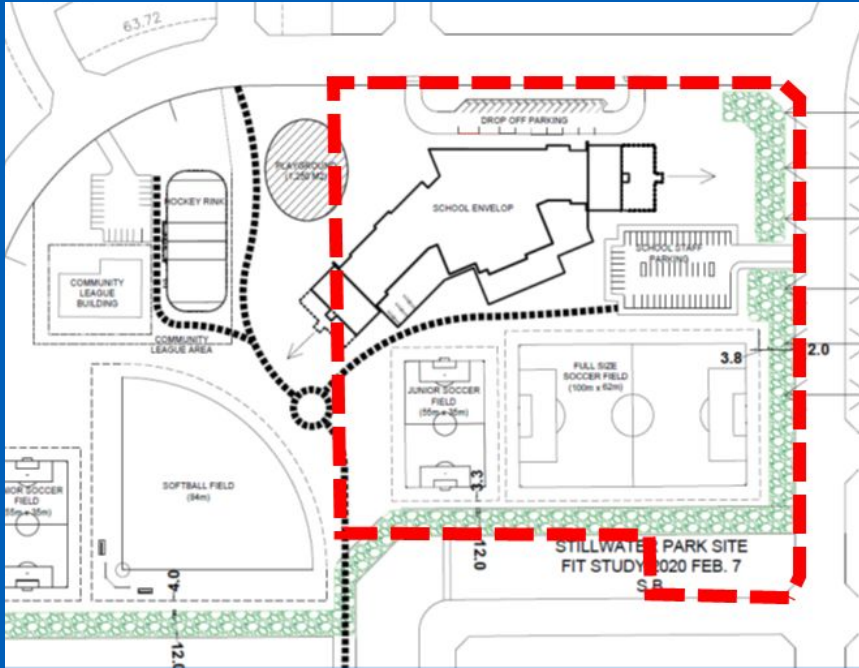
Site 7 River's Edge (Riverview K-9)



Site 6
West 10-12:
Riverview
Campus Site



Site 5 Stillwater (Riverview K-9)



Site 7 River's Edge (Riverview K-9)



Site 8

Dr. Margaret - Ann Armour School

Details

- Current Capacity = 922 Spaces
- Adjusted Enrolment = 1077
- Estimated Utilization = 117%
- Lottery in place
- Attendance Area = Ambleside and Glenridding Heights neighbourhoods

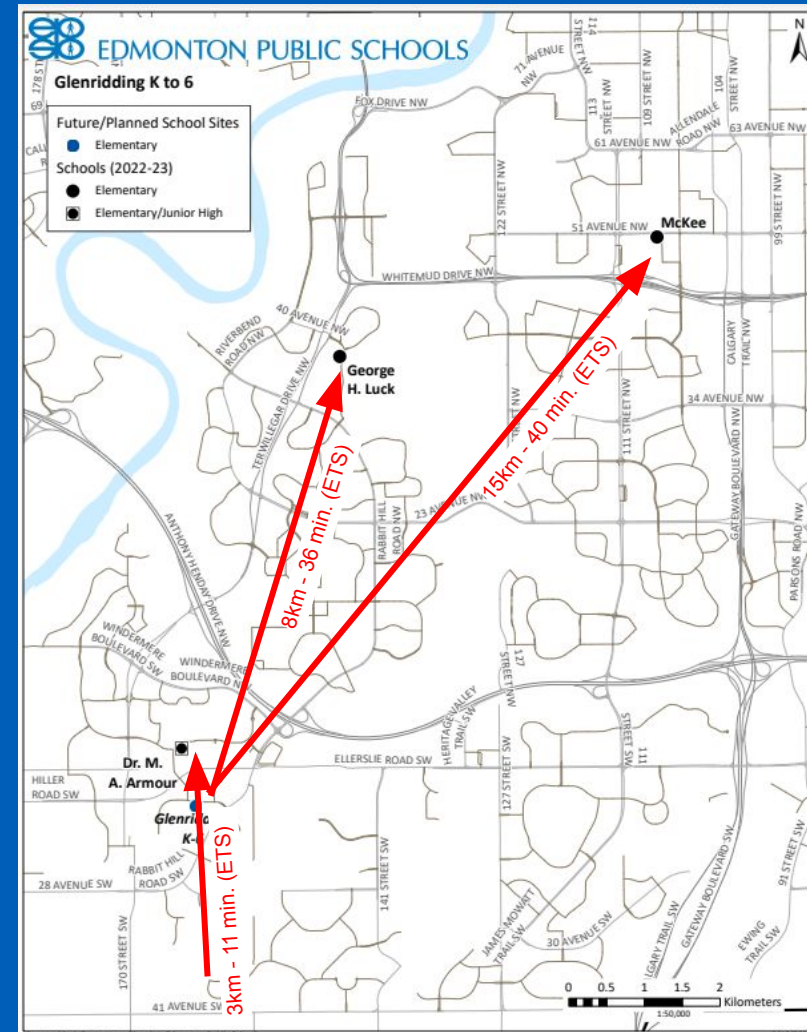
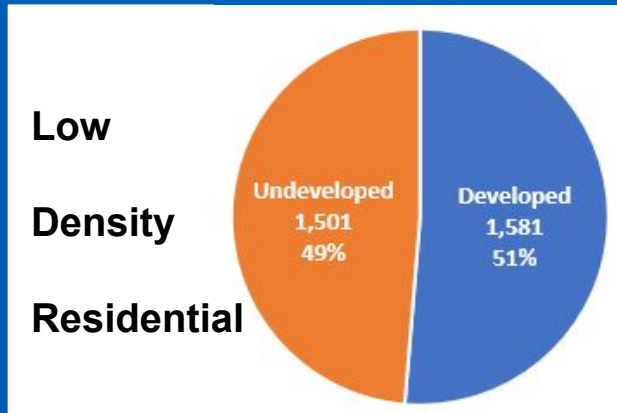
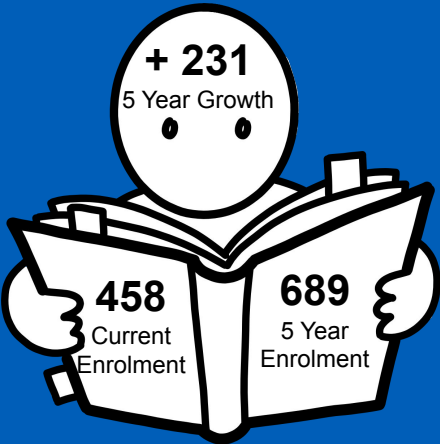
Enrolment History and Projections

	Total Enrolment									
Grades	2018/19	2019/20	2020/21	2021/22	2022/23	2023/24	2024/25	2025/26	2026/27	2027/28
Grade 0	93	123	83	100	99	100	100	100	100	100
Grade 1	120	97	127	100	102	99	100	102	102	101
Grade 2	111	128	101	120	101	102	99	100	102	102
Grade 3	84	115	134	99	120	101	102	99	100	102
Grade 4	78	93	120	124	102	120	101	102	99	100
Grade 5	67	80	97	116	120	102	120	101	102	99
Grade 6	92	73	84	96	114	120	102	120	101	102
Grade 7	70	101	78	88	102	116	120	102	120	101
Grade 8	62	71	101	79	93	105	118	122	105	123
Grade 9	51	66	68	95	82	93	105	119	122	105
Totals	828	947	993	1017	1035	1058	1067	1067	1053	1035

Site 9

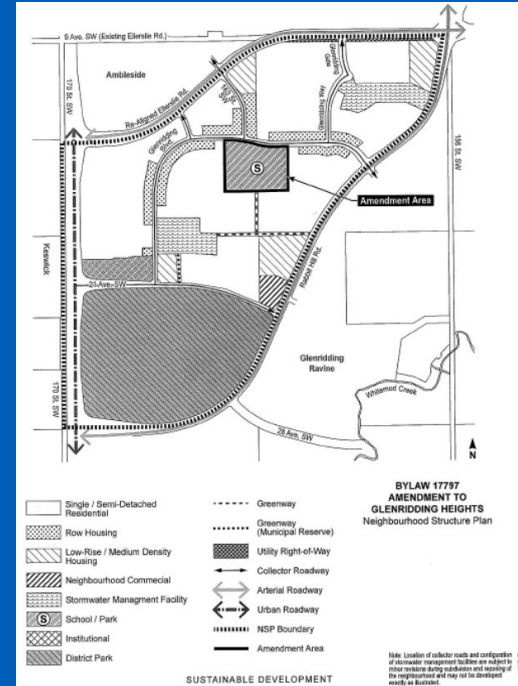
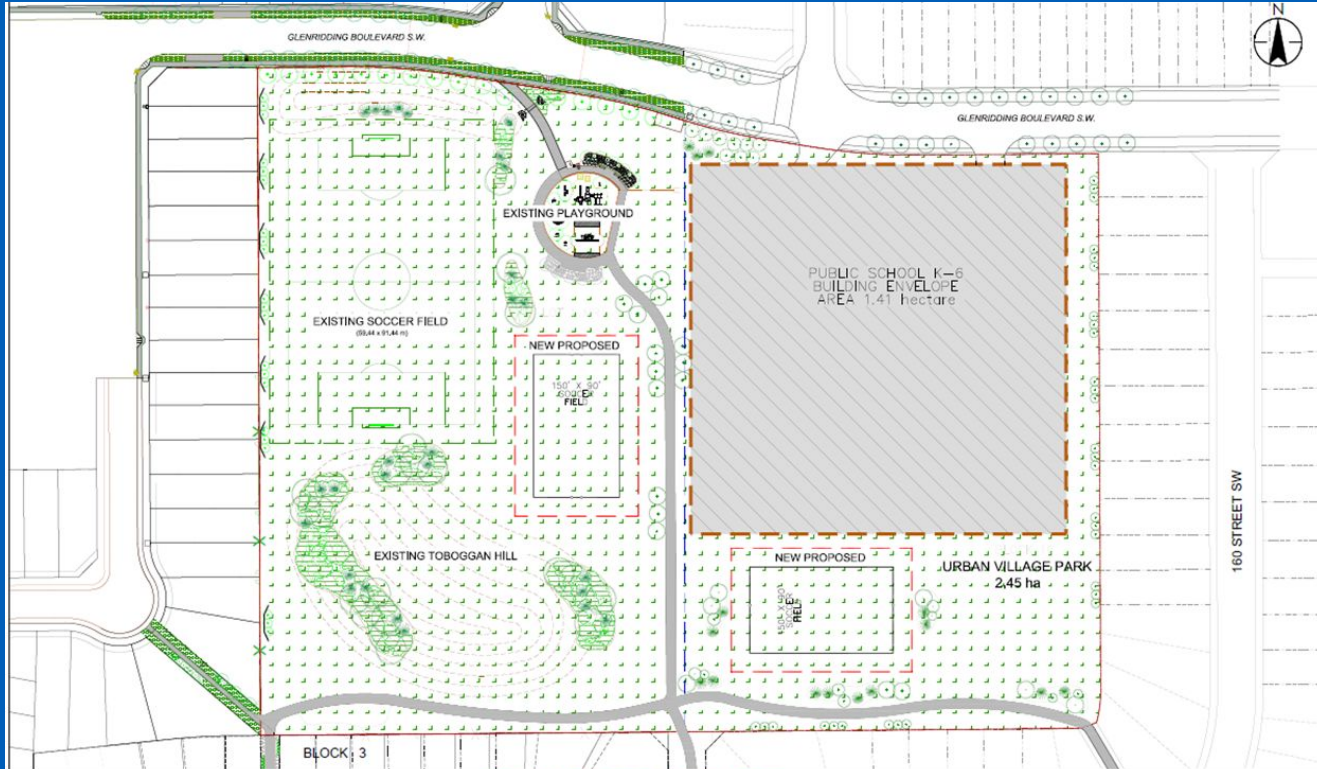
Glenridding Heights K-6: At a Glance

Current Designated School	Utilization	Distance
Dr. Margaret-Ann Armour (Lottery)	117%	1 km
McKee (Overflow)	70%	15 km
George H. Luck	97%	8 km



Site 9

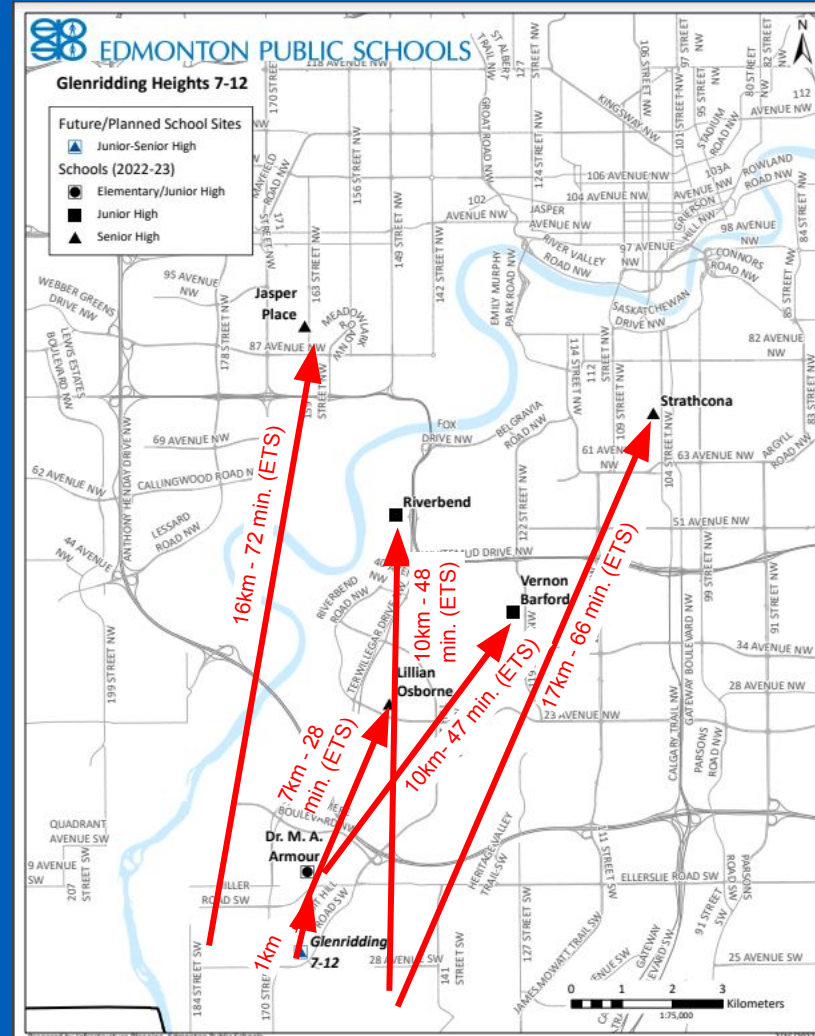
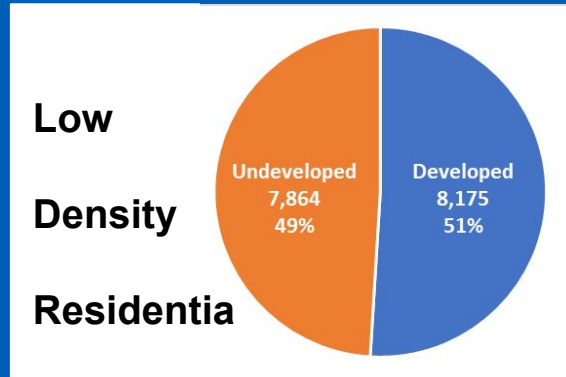
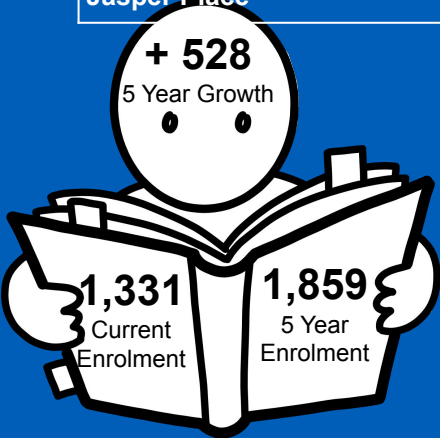
Glenridding Heights K-6: At a Glance



Site 10

Glenridding Heights 7-12: At a Glance

Current Designated School	Utilization	Distance
Dr. Margaret-Ann Armour (Lottery)	117%	1 km
Vernon Barford (Overflow)	100%	10 km
Riverbend	97%	10 km
Lillian Osborne (Lottery)	123%	7 km
Strathcona (Overflow)	111%	17 km
Jasper Place	81%	16 km



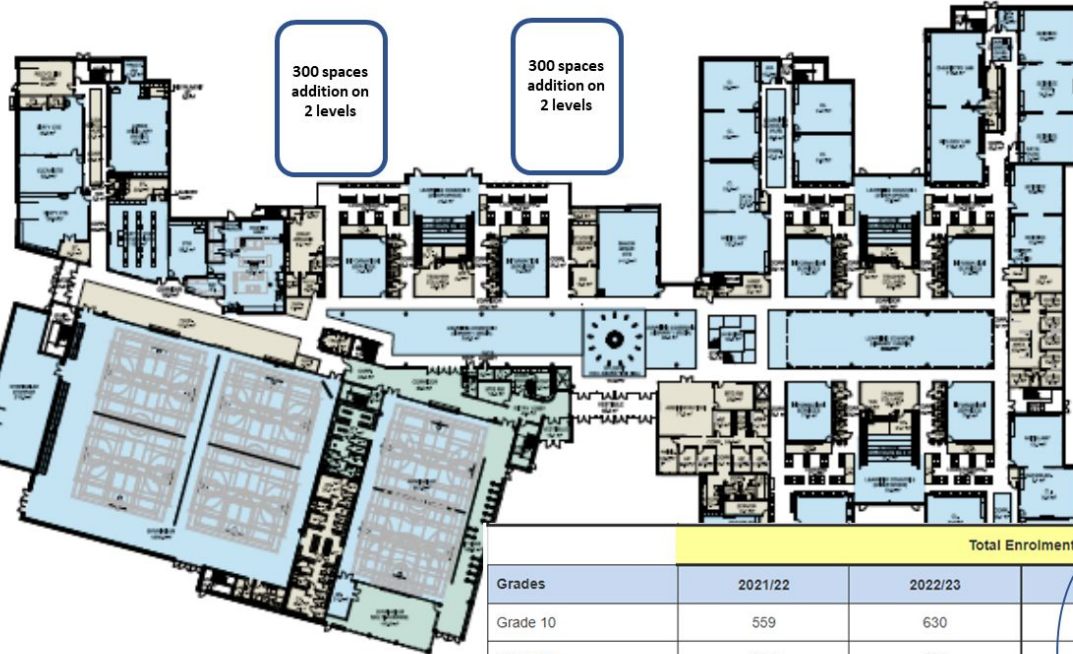
Site 10 Glenridding Heights 7-12: Windermere Campus Park



Site 11

Dr. Anne Anderson School: 600 Capacity Addition

Attachment 1



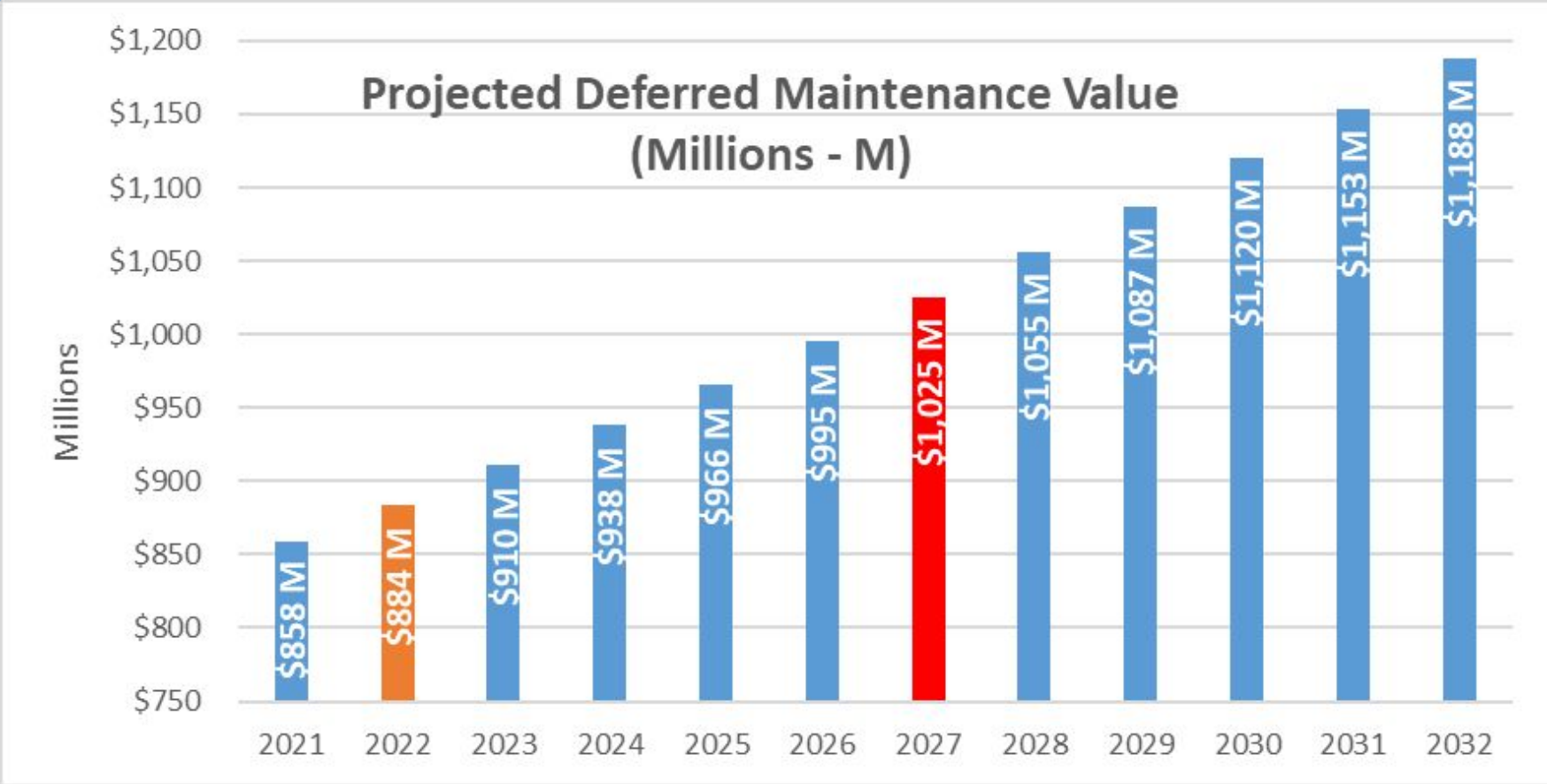
Details

- Current Capacity = 1940 Spaces
- Adjusted Enrolment = 1471
- Estimated Utilization = 75%
- School opened in September 2021, Grades 10 & 11 only
- Added Grade 12 in September 2022
- Projected to be at capacity during 2023/24 School Year

Enrolment History and Projections

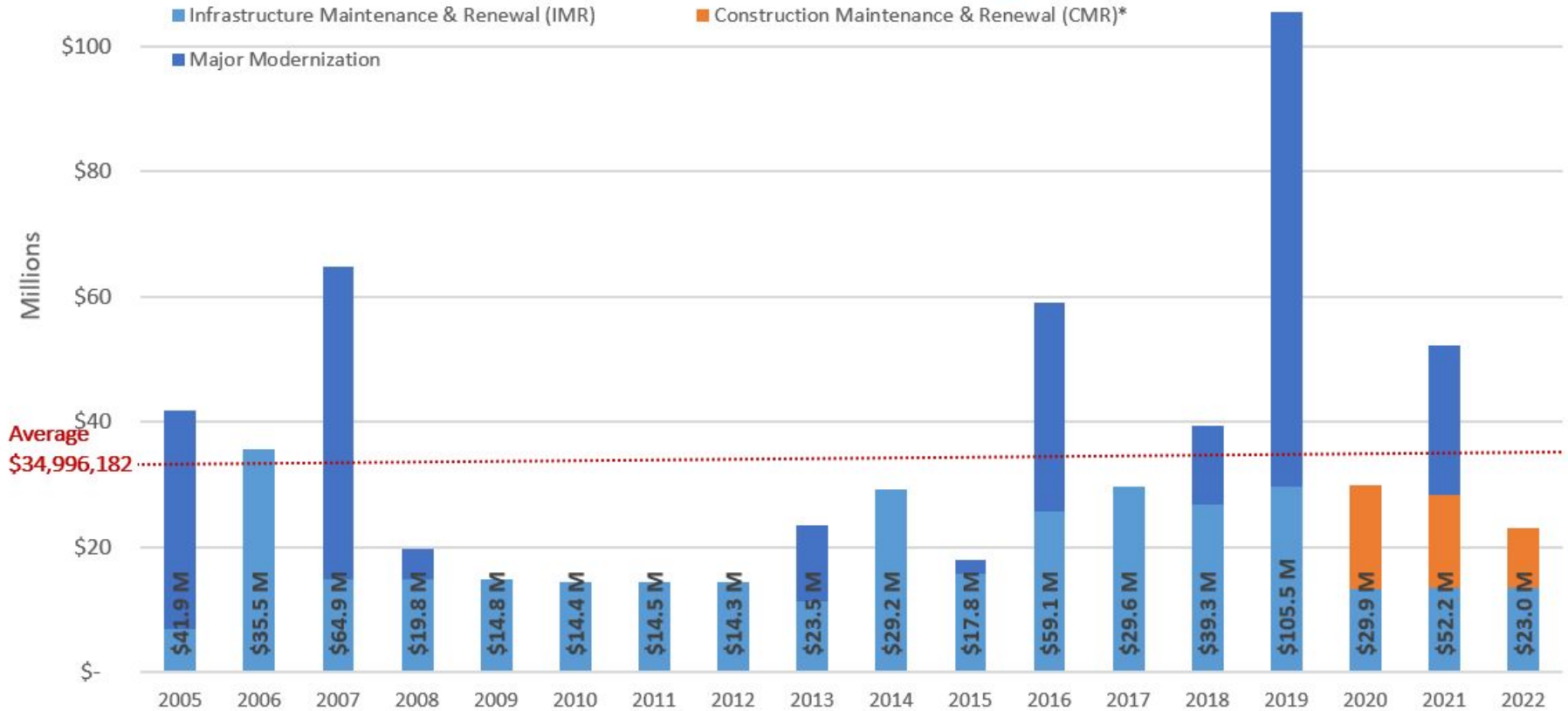
	Total Enrolment						
Grades	2021/22	2022/23	2023/24	2024/25	2025/26	2026/27	2027/28
Grade 10	559	630	660	698	699	706	735
Grade 11	204	576	648	680	718	719	726
Grade 12	0	237	611	686	720	760	761
Totals	763	1443	1919	2064	2137	2185	2222

Deferred Maintenance: On Pace to Continue Rising

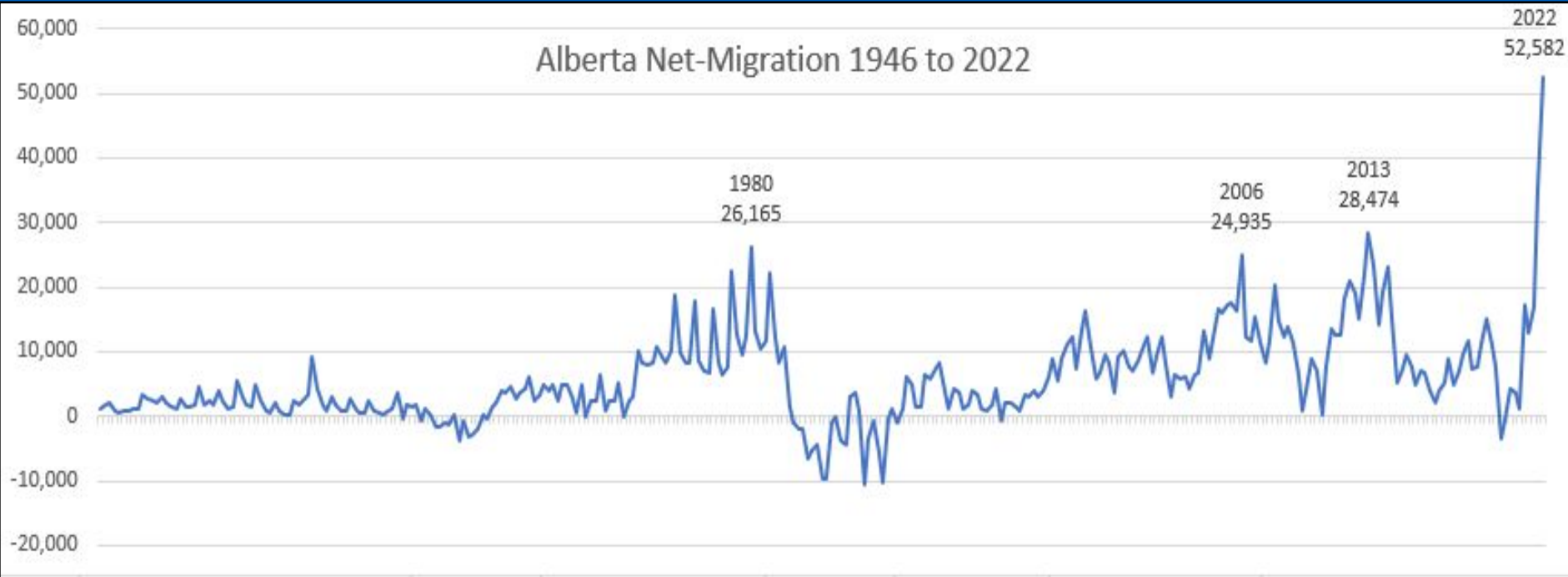


Capital Renewal Funding: Modernizations, IMR\CMR

Infrastructure Maintenance Funding 2005 to 2022



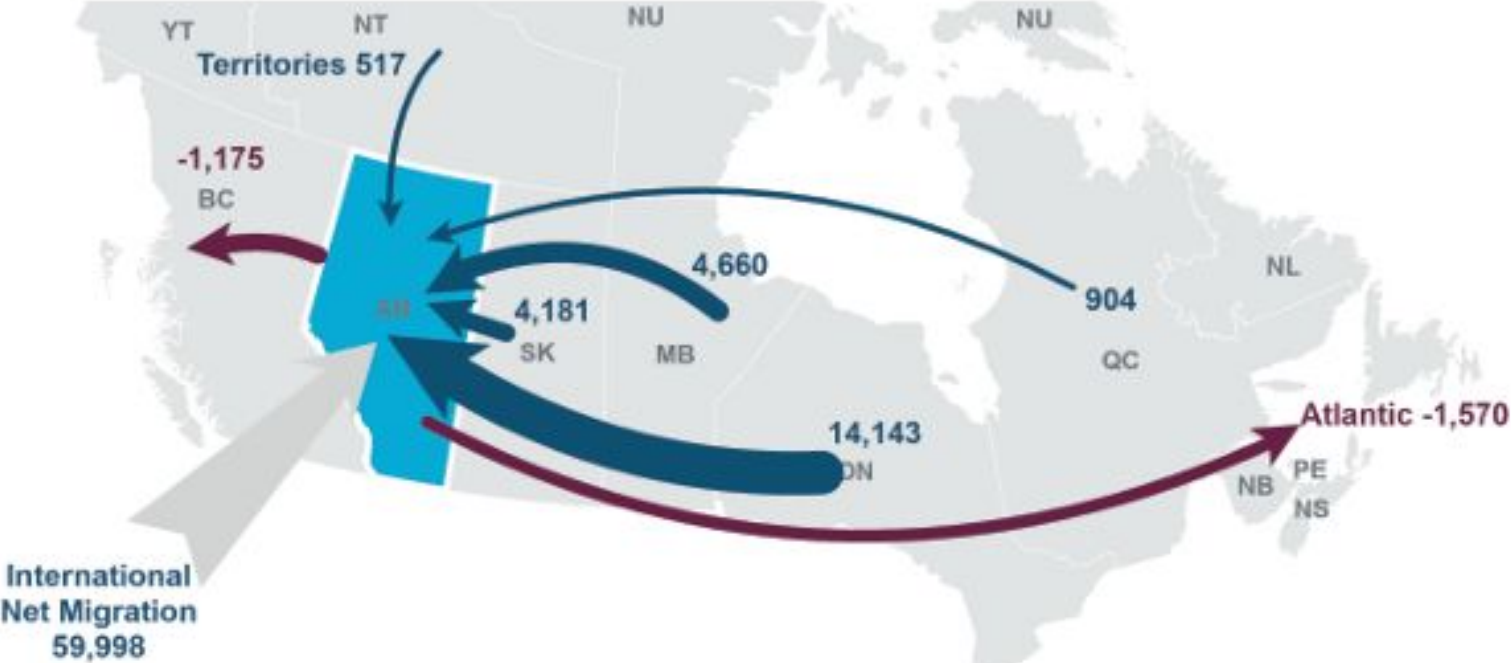
Net Migration in Alberta: Record Levels



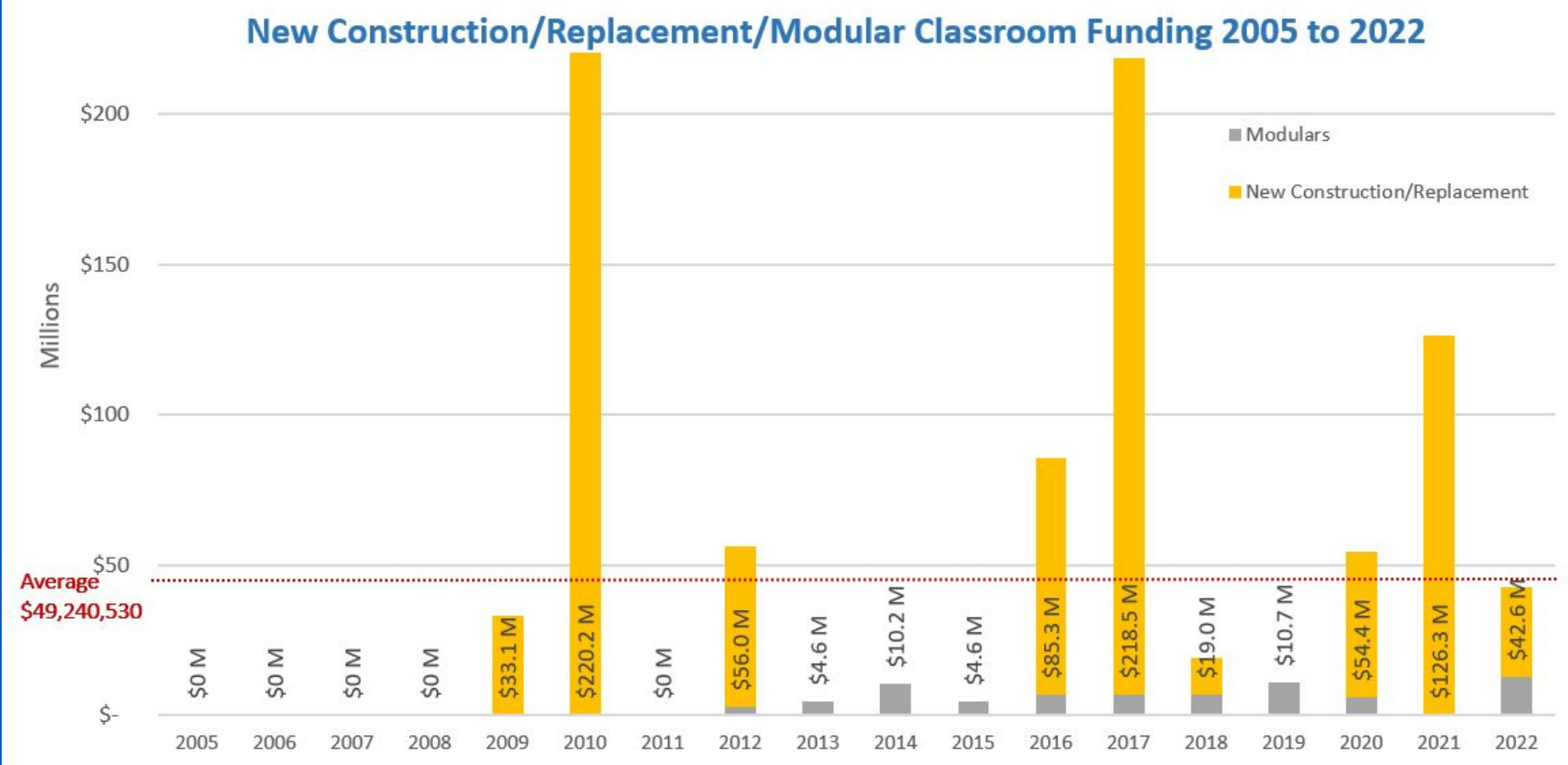
Net Migration in Alberta: Where from?

MAP 1: NET POPULATION MOVEMENT FOR ALBERTA

July 1, 2021 to June 30, 2022

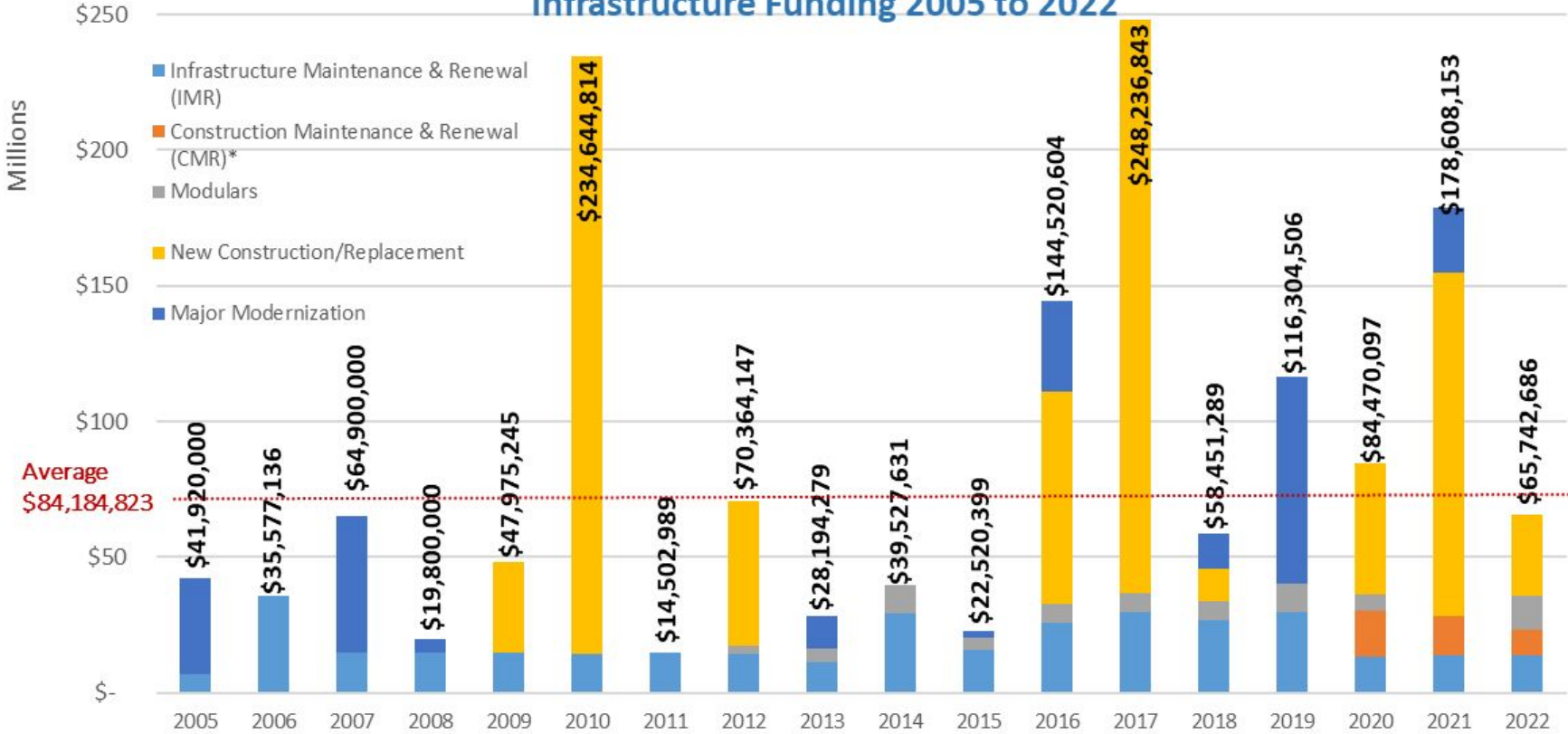


Infrastructure Funding: New Construction & Modulares



Infrastructure Funding: Below Average Levels

Infrastructure Funding 2005 to 2022



Division Centres: New Students and Establishments

